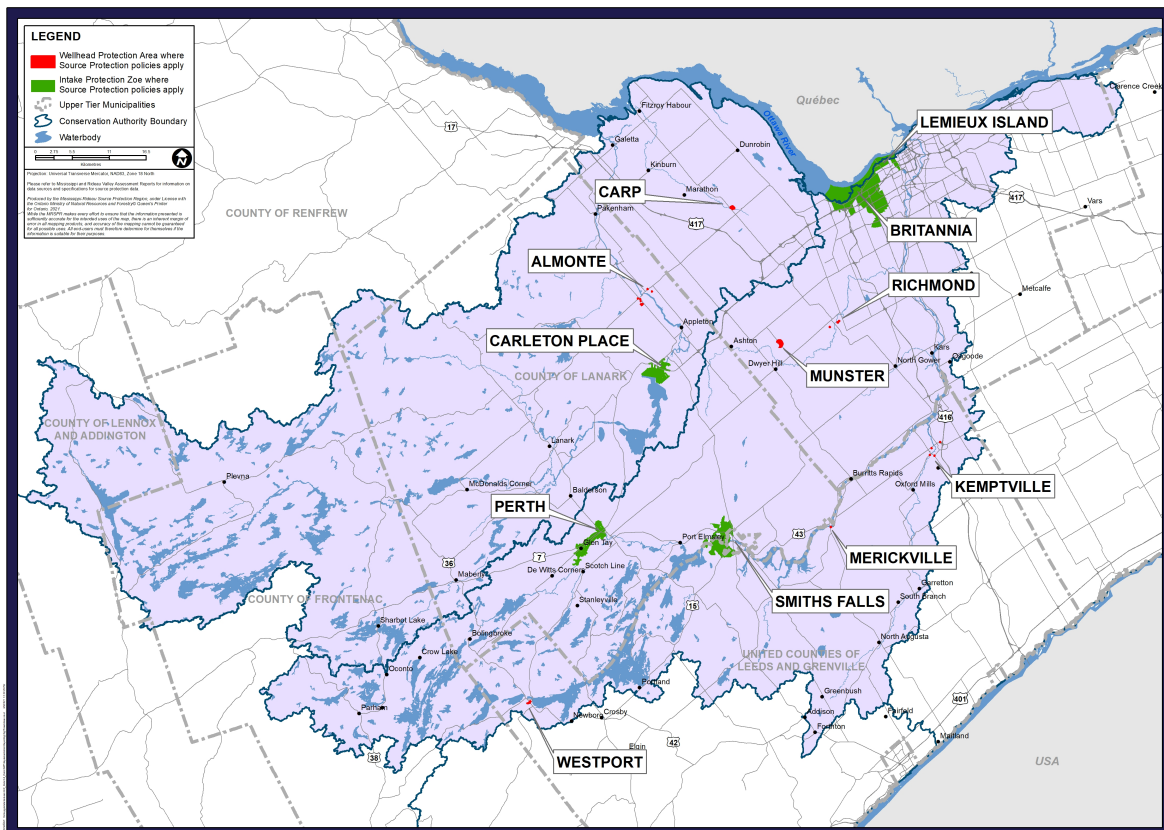


Source Protection Annual Progress Report |

I. Introduction



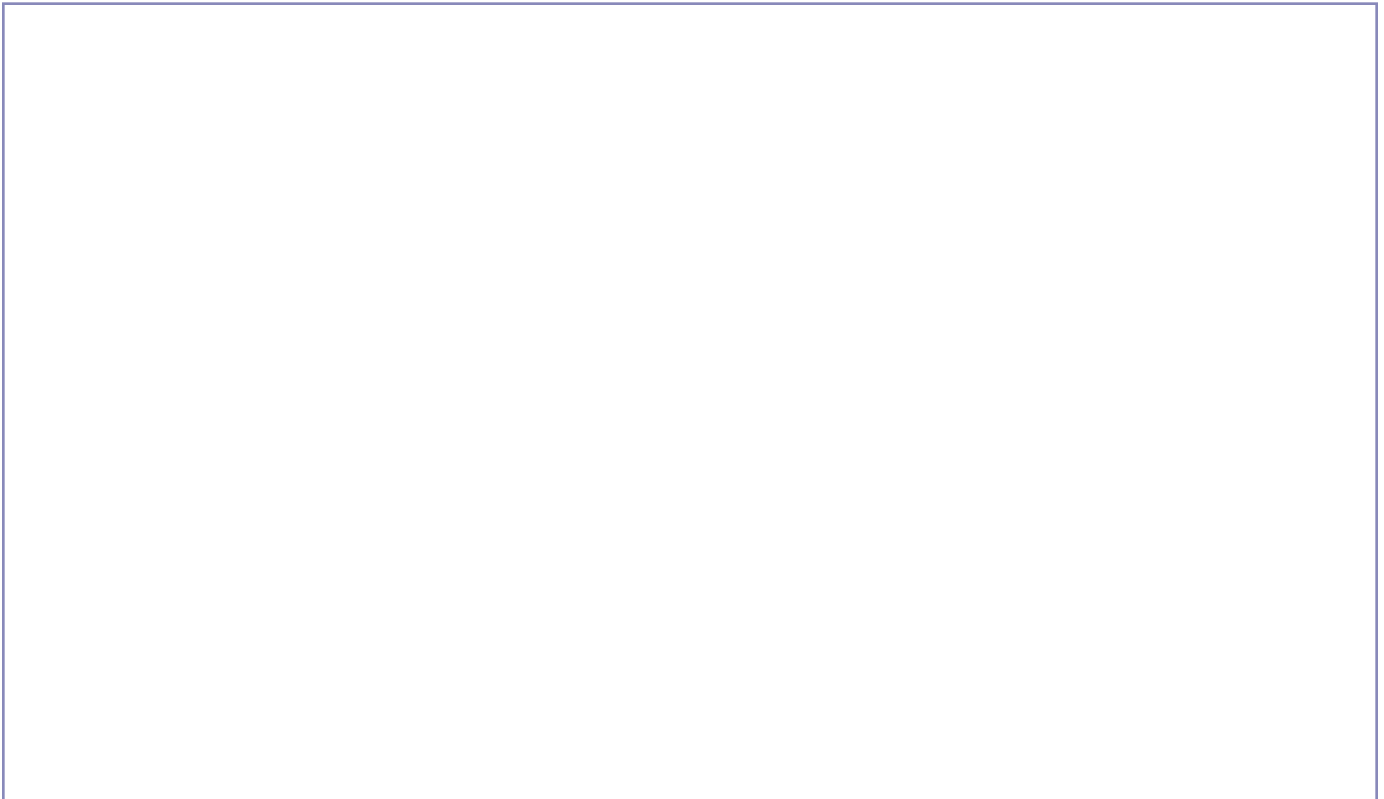
II. A message from your local Source Protection Committee

Our progress score on achieving source protection plan objectives this reporting period:

P : Progressing Well/On Target – The majority of the source protection plan policies have been implemented and/or are progressing.

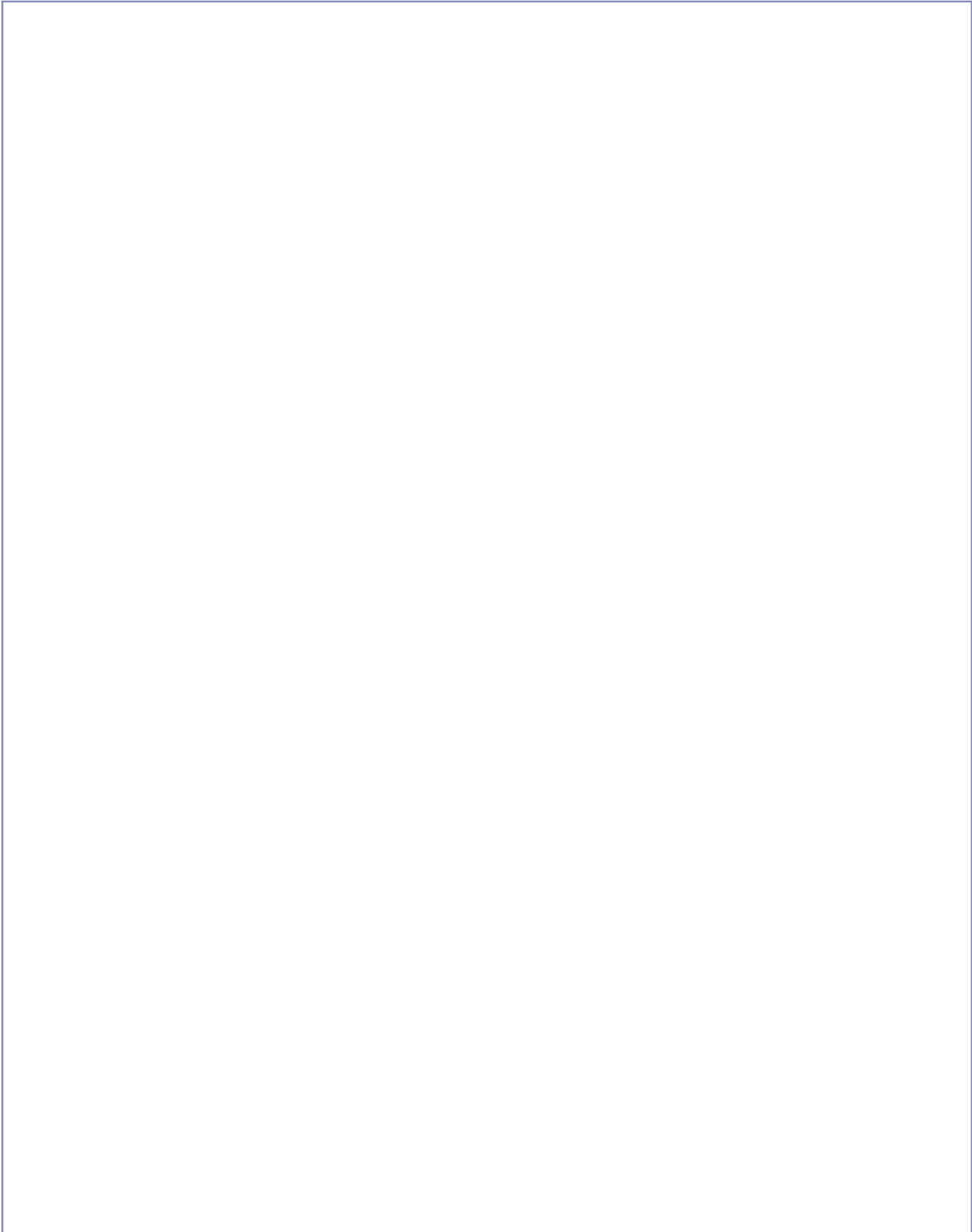
S : Satisfactory – Some of the source protection plan policies have been implemented and/or are progressing.

L : Limited progress – A few of source protection plan policies have been implemented and/or are progressing.



III. Our Watershed

To learn more, please read our assessment report(s) and source protection plan(s).

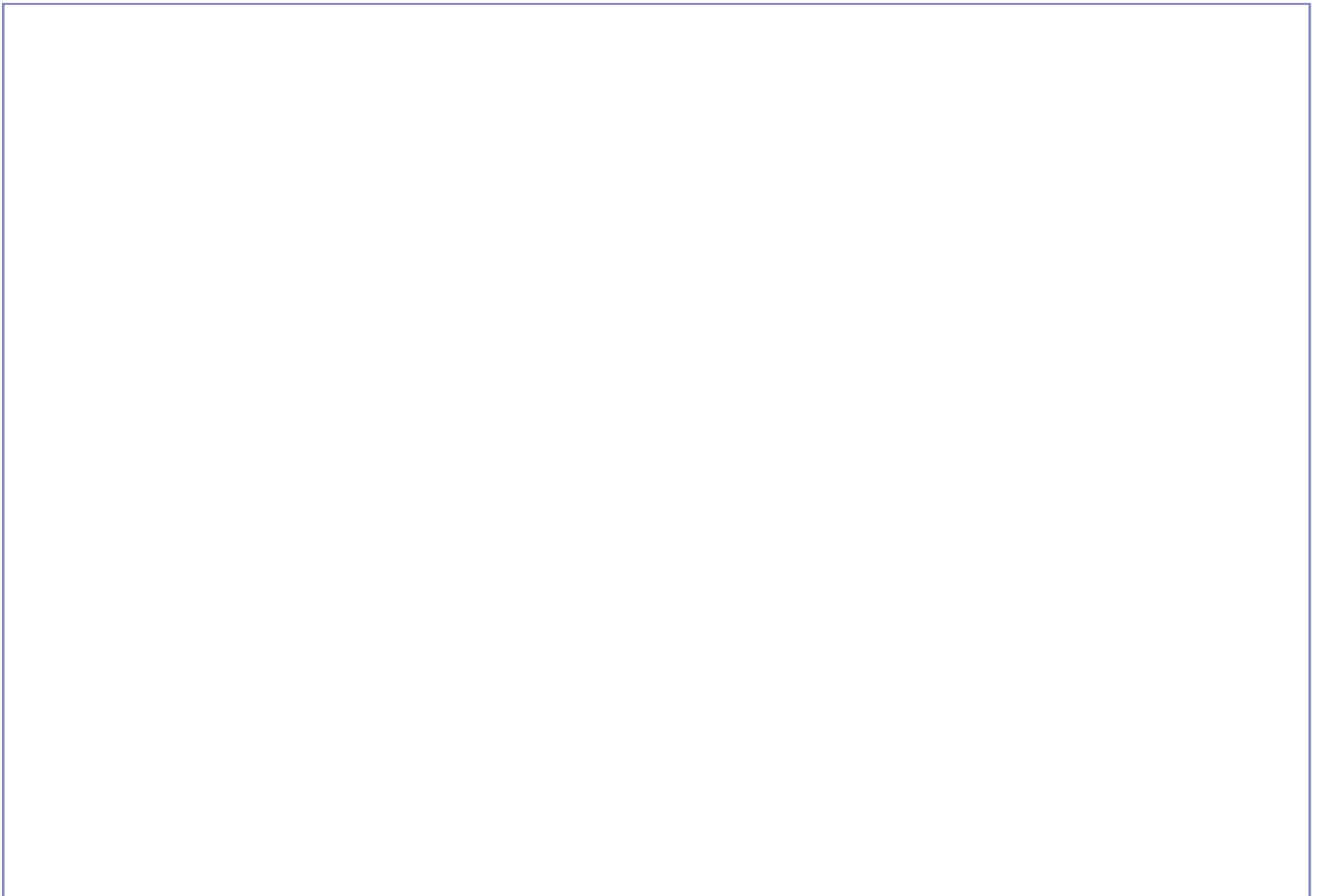


IV. At a Glance: Progress on Source Protection Plan Implementation

1. Source Protection Plan Policies and Addressing Significant Risks

A large, empty rectangular box with a thin blue border, intended for text or graphics related to the first section header.

2. Municipal Progress: Addressing Risks on the Ground

A large, empty rectangular box with a thin blue border, intended for text or graphics related to the second section header.

3. Septic Inspections

[Empty rectangular box for Septic Inspections content]

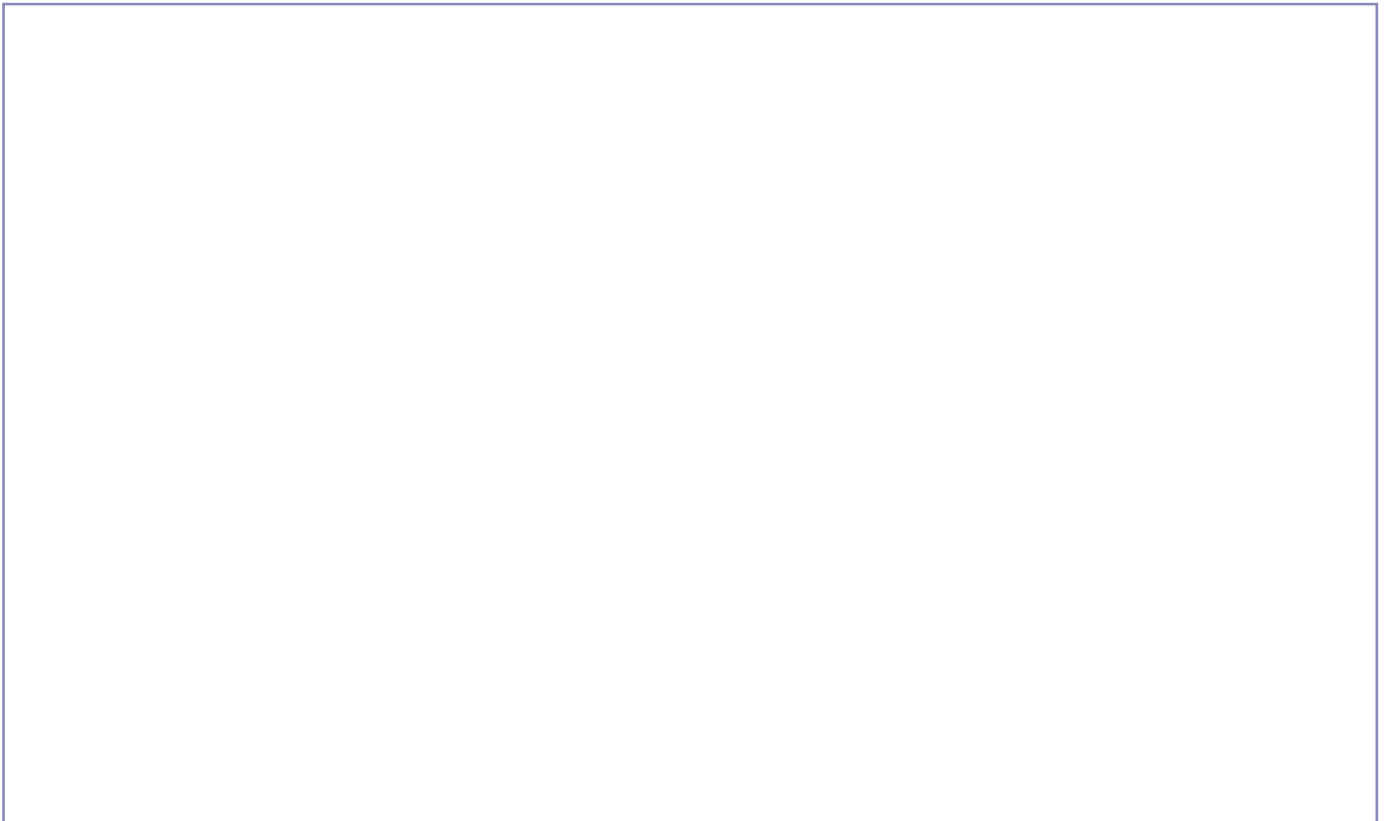
4. Risk Management Plans

[Empty rectangular box for Risk Management Plans content]

5. Provincial Progress: Addressing Risks on the Ground



6. Source Protection Awareness and Change in Behaviour



7. Source Protection Plan Policies: Summary of Delays

--

8. Source Water Quality: Monitoring and Actions



9. More from the Watershed

To learn more about our source protection region/area, visit:



Place photos here