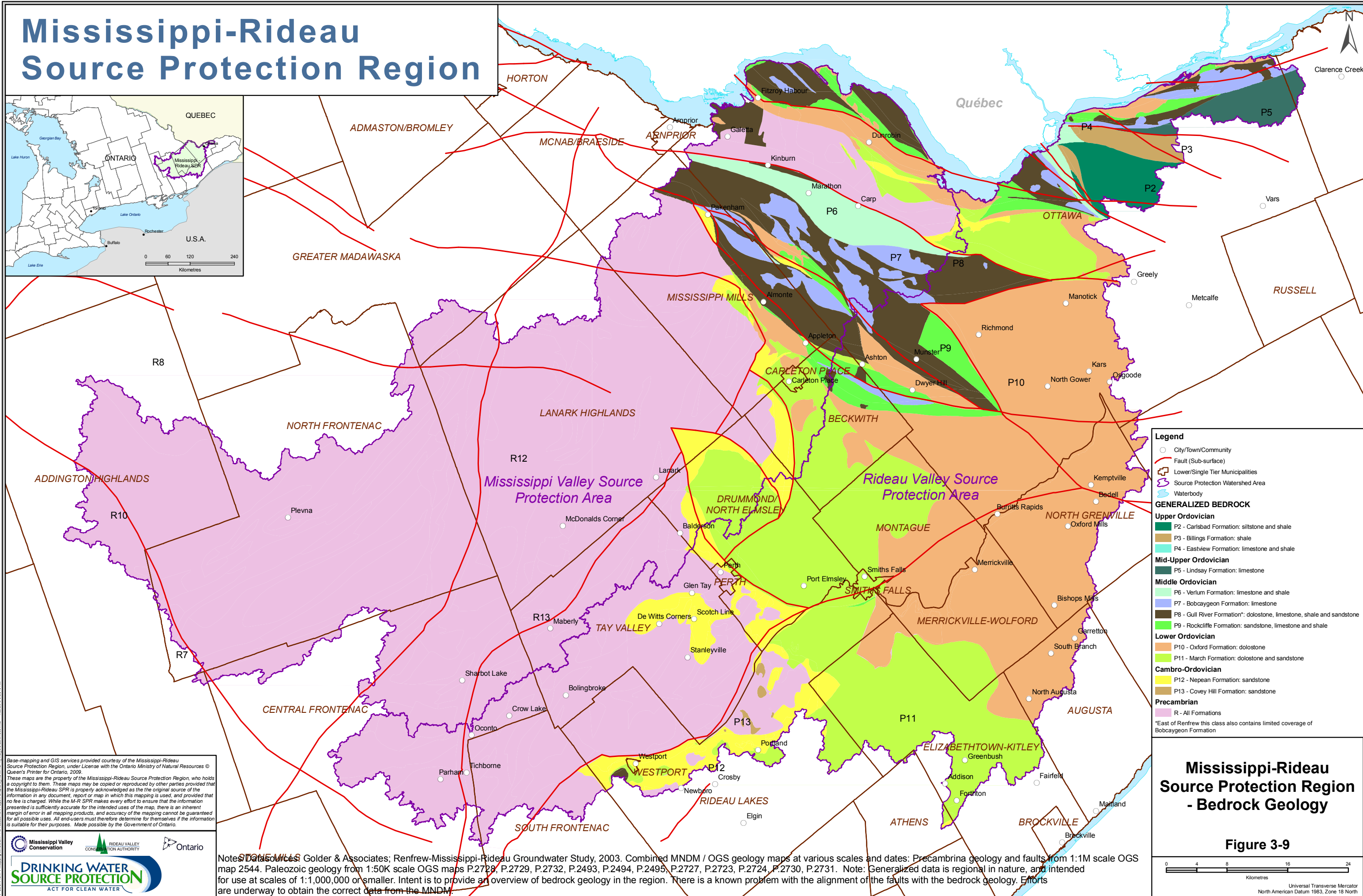


# Mississippi-Rideau Source Protection Region



**Legend**

- City/Town/Community
- Fault (Sub-surface)
- ▭ Lower/Single Tier Municipalities
- ▭ Source Protection Watershed Area
- ▭ Waterbody

**GENERALIZED BEDROCK**

**Upper Ordovician**

- P2 - Carlsbad Formation: siltstone and shale
- P3 - Billings Formation: shale
- P4 - Eastview Formation: limestone and shale

**Mid-Upper Ordovician**

- P5 - Lindsay Formation: limestone

**Middle Ordovician**

- P6 - Verium Formation: limestone and shale
- P7 - Bobcaygeon Formation: limestone
- P8 - Gull River Formation\*: dolostone, limestone, shale and sandstone
- P9 - Rockcliffe Formation: sandstone, limestone and shale

**Lower Ordovician**

- P10 - Oxford Formation: dolostone
- P11 - March Formation: dolostone and sandstone

**Cambro-Ordovician**

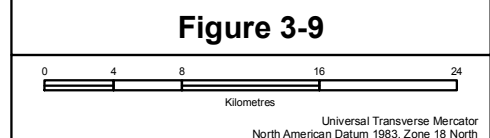
- P12 - Nepean Formation: sandstone
- P13 - Covey Hill Formation: sandstone

**Precambrian**

- R - All Formations

\*East of Renfrew this class also contains limited coverage of Bobcaygeon Formation

## Mississippi-Rideau Source Protection Region - Bedrock Geology



Base-mapping and GIS services provided courtesy of the Mississippi-Rideau Source Protection Region, under License with the Ontario Ministry of Natural Resources © Queen's Printer for Ontario, 2009.

These maps are the property of the Mississippi-Rideau Source Protection Region, who holds a copyright to them. These maps may be copied or reproduced by other parties provided that the Mississippi-Rideau SPR is properly acknowledged as the original source of the information in any document, report or map in which this mapping is used, and provided that no fee is charged. While the M-R SPR makes every effort to ensure that the information presented is sufficiently accurate for the intended uses of the map, there is an inherent margin of error in all mapping products, and accuracy of the mapping cannot be guaranteed for all possible uses. All end-users must therefore determine for themselves if the information is suitable for their purposes. Made possible by the Government of Ontario.

**DRINKING WATER SOURCE PROTECTION**  
ACT FOR CLEAN WATER

Notes: Data sources: Golder & Associates; Renfrew-Mississippi-Rideau Groundwater Study, 2003. Combined MNM / OGS geology maps at various scales and dates: Precambrian geology and faults from 1:1M scale OGS map 2544. Paleozoic geology from 1:50K scale OGS maps P.2729, P.2729, P.2732, P.2493, P.2494, P.2495, P.2727, P.2723, P.2724, P.2730, P.2731. Note: Generalized data is regional in nature, and intended for use at scales of 1:1,000,000 or smaller. Intent is to provide an overview of bedrock geology in the region. There is a known problem with the alignment of the faults with the bedrock geology. Efforts are underway to obtain the correct data from the MNM.