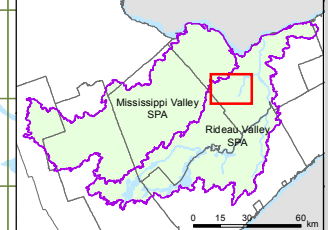


Mississippi Valley Source Protection Area

Rideau Valley Source Protection Area



Mississippi-Rideau SOURCE PROTECTION REGION

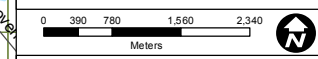
LEGEND

- Municipal Well
- Road
- Railway
- Municipal Boundary
- Water Course
- Waterbody
- Wetland
- Source Protection Area
- Wellhead Protection Area Capture Zone**
- Zone A: 100m Radius
- Zone B: 2 Yr Time of Travel
- Zone C: 5 Yr Time of Travel
- Zone D: 25 Yr Time of Travel

- Impervious Surfaces - Percent**
- 0.0 - 1.0
 - 1.01 - 8.0
 - 8.01 - 80.0
 - > 80.0 color swatch"/> > 80.0
 - 1 km Impervious Surfaces Grid

Munster Richmond Wellhead Protection Area - Impervious Surfaces

Figure 5-7-4b



Projection: Universal Transverse Mercator, NAD83, Zone 18 North
Produced by the Mississippi-Rideau Source Protection Region, under License with the Ontario Ministry of Natural Resources © Queen's Printer for Ontario, 2018.
While the MRSPR makes every effort to ensure that the information presented is sufficiently accurate for the intended uses of the map, there is an inherent margin of error in all mapping products, and accuracy of the mapping cannot be guaranteed for all possible uses. All end-users must therefore determine for themselves if the information is suitable for their purposes.

The location of the map is based on the National Hydrographic Dataset (NHD) data, Ontario Road Network, and MNR Built-up areas. Analysis completed by MRSPR staff. Consolidated Groundwater Vulnerability Study, Richmond Village, King's Park, and Munster Well Systems. Golder Associates Ltd. November 2018

Notes/Datasources: Impervious Surfaces derived from Southern Ontario Land Resource Information System (SOLRIS) data, Ontario Road Network, and MNR Built-up areas. Analysis completed by MRSPR staff. Consolidated Groundwater Vulnerability Study, Richmond Village, King's Park, and Munster Well Systems. Golder Associates Ltd. November 2018