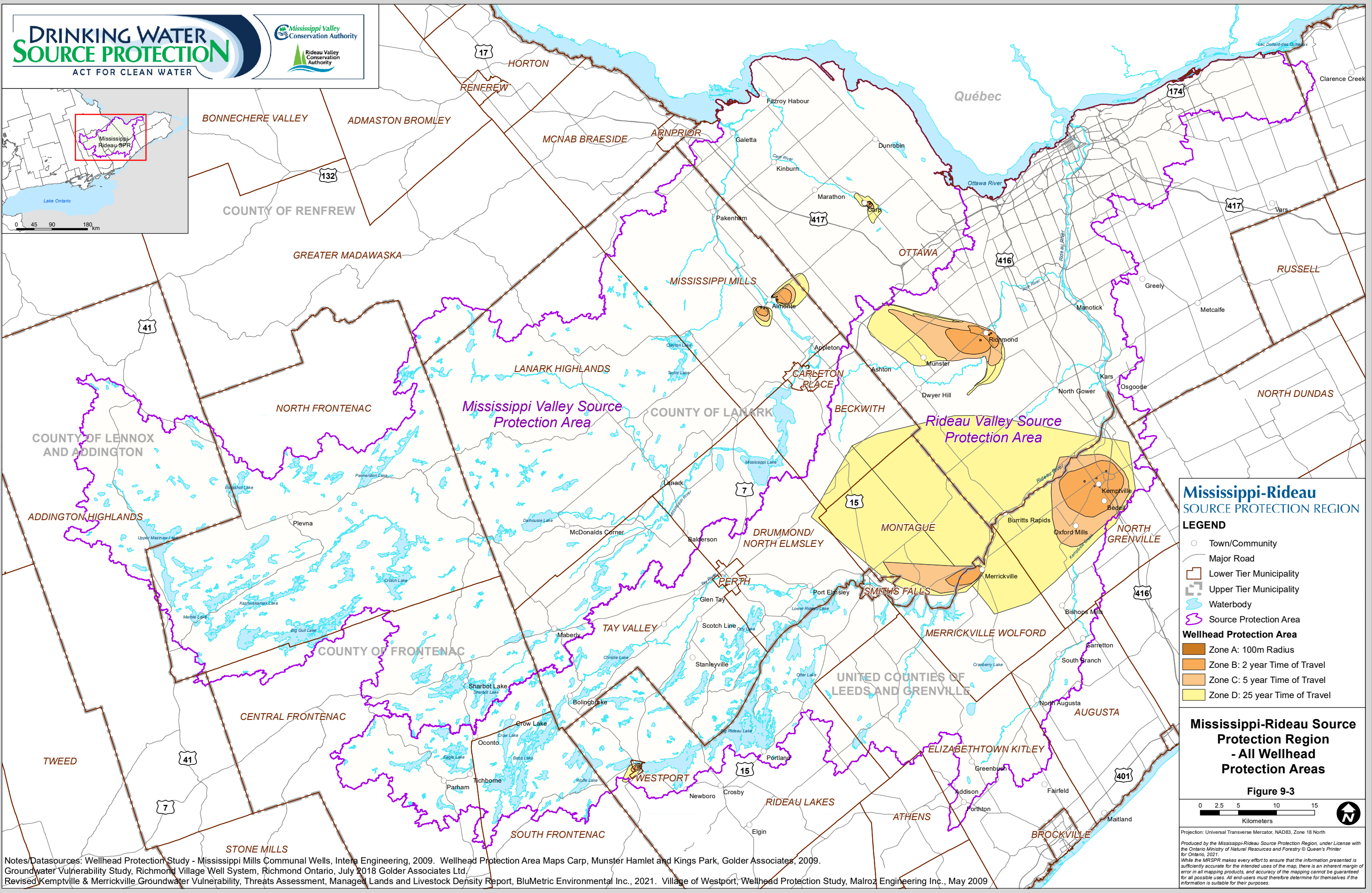


0 45 90 180 km



Mississippi-Rideau SOURCE PROTECTION REGION

- LEGEND**
- Town/Community
 - Major Road
 - Lower Tier Municipality
 - Upper Tier Municipality
 - Waterbody
 - Source Protection Area
- Wellhead Protection Area**
- Zone A: 100m Radius
 - Zone B: 2 year Time of Travel
 - Zone C: 5 year Time of Travel
 - Zone D: 25 year Time of Travel

Mississippi-Rideau Source Protection Region - All Wellhead Protection Areas

Figure 9-3

0 2.5 5 10 15
Kilometers

Projection: Universal Transverse Mercator, NAD83, Zone 18 North
Produced by the Mississippi-Rideau Source Protection Region, under license with the Ontario Ministry of Natural Resources and Forestry © Queen's Printer for Ontario, 2021.
While the MRSPR makes every effort to ensure that the information presented is sufficiently accurate for the intended uses of the map, there is an inherent margin of error in all mapping products, and accuracy of the mapping cannot be guaranteed for all possible uses. All end-users must therefore determine for themselves if the information is suitable for their purposes.

Notes/Datasources: Wellhead Protection Study - Mississippi Mills Communal Wells, Intera Engineering, 2009. Wellhead Protection Area Maps Carp, Munster Hamlet and Kings Park, Golder Associates, 2009. Groundwater Vulnerability Study, Richmond Village Well System, Richmond Ontario, July 2018 Golder Associates Ltd. Revised Kemptville & Merrickville Groundwater Vulnerability, Threats Assessment, Managed Lands and Livestock Density Report, BluMetric Environmental Inc., 2021. Village of Westport, Wellhead Protection Study, Malroz Engineering Inc., May 2009