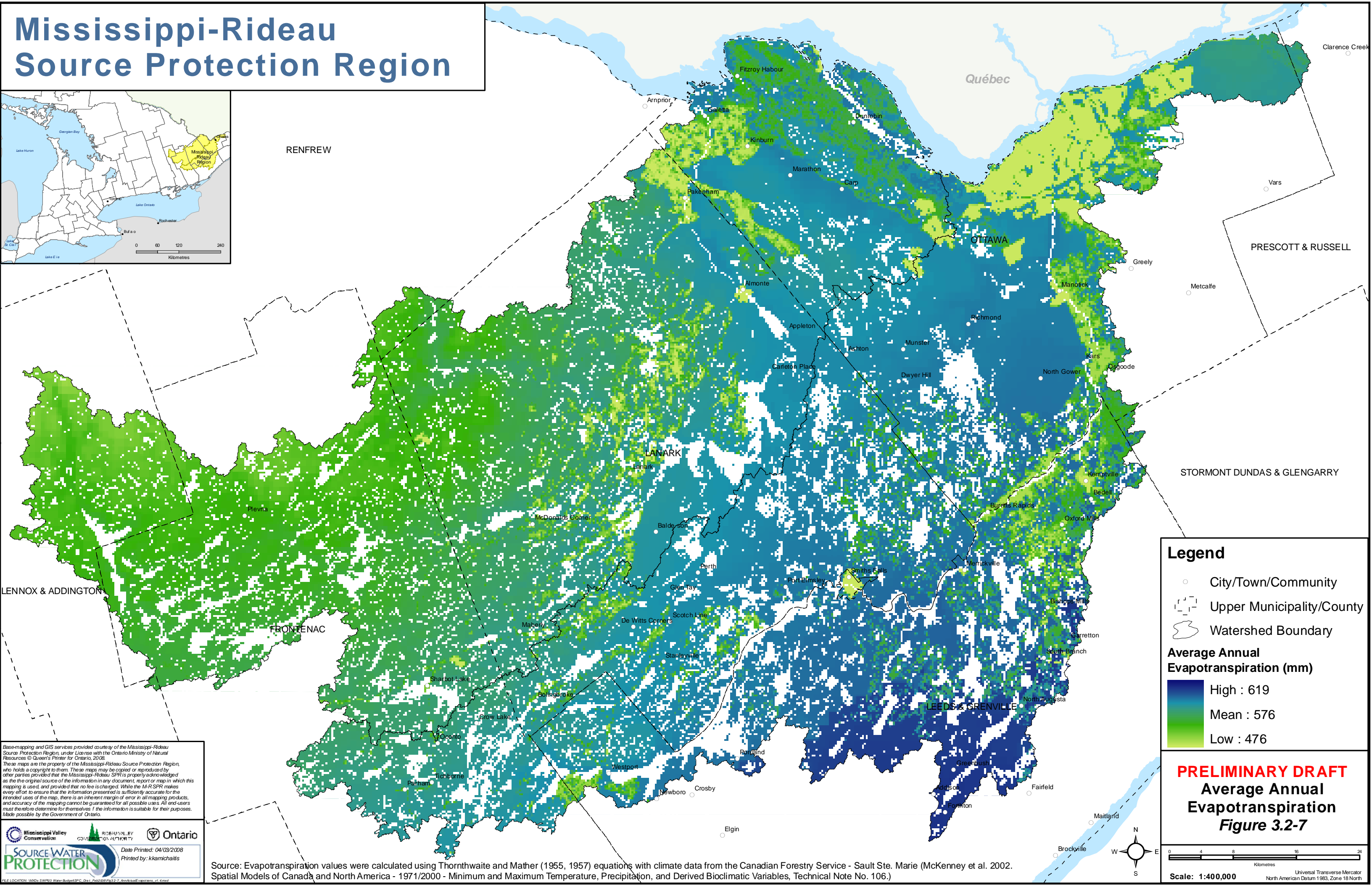
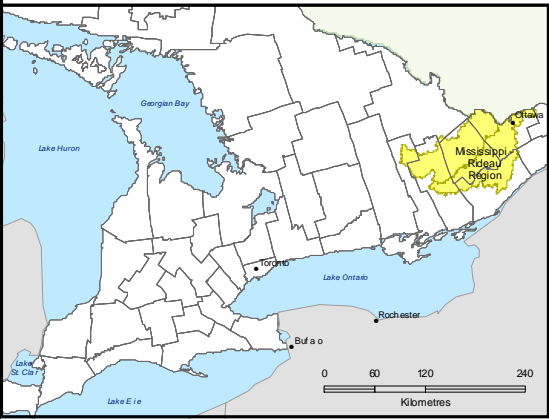


Mississippi-Rideau Source Protection Region



RENFREW

Québec

OTTAWA

PRESCOTT & RUSSELL

LANARK

STORMONT DUNDAS & GLENGARRY

FRONTENAC

LEEDS & GRENVILLE

Legend

- City/Town/Community
- ⋮ Upper Municipality/County
- ⋮ Watershed Boundary

Average Annual Evapotranspiration (mm)

	High : 619
	Mean : 576
	Low : 476

Base-mapping and GIS services provided courtesy of the Mississippi-Rideau Source Protection Region, under License with the Ontario Ministry of Natural Resources © Queen's Printer for Ontario, 2008. These maps are the property of the Mississippi-Rideau Source Protection Region, who holds a copyright to them. These maps may be copied or reproduced by other parties provided that the Mississippi-Rideau SPR is properly acknowledged as the original source of the information in any document, report or map in which this mapping is used, and provided that no fee is charged. While the M-R SPR makes every effort to ensure that the information presented is sufficiently accurate for the intended uses of the map, there is an inherent margin of error in all mapping products, and accuracy of the mapping cannot be guaranteed for all possible uses. All end-users must therefore determine for themselves if the information is suitable for their purposes. Made possible by the Government of Ontario.

Source Water PROTECTION

Date Printed: 04/03/2008
Printed by: kkamichailis

Source: Evapotranspiration values were calculated using Thornthwaite and Mather (1955, 1957) equations with climate data from the Canadian Forestry Service - Sault Ste. Marie (McKenney et al. 2002. Spatial Models of Canada and North America - 1971/2000 - Minimum and Maximum Temperature, Precipitation, and Derived Bioclimatic Variables, Technical Note No. 106.)

PRELIMINARY DRAFT
Average Annual Evapotranspiration
Figure 3.2-7

Scale: 1:400,000