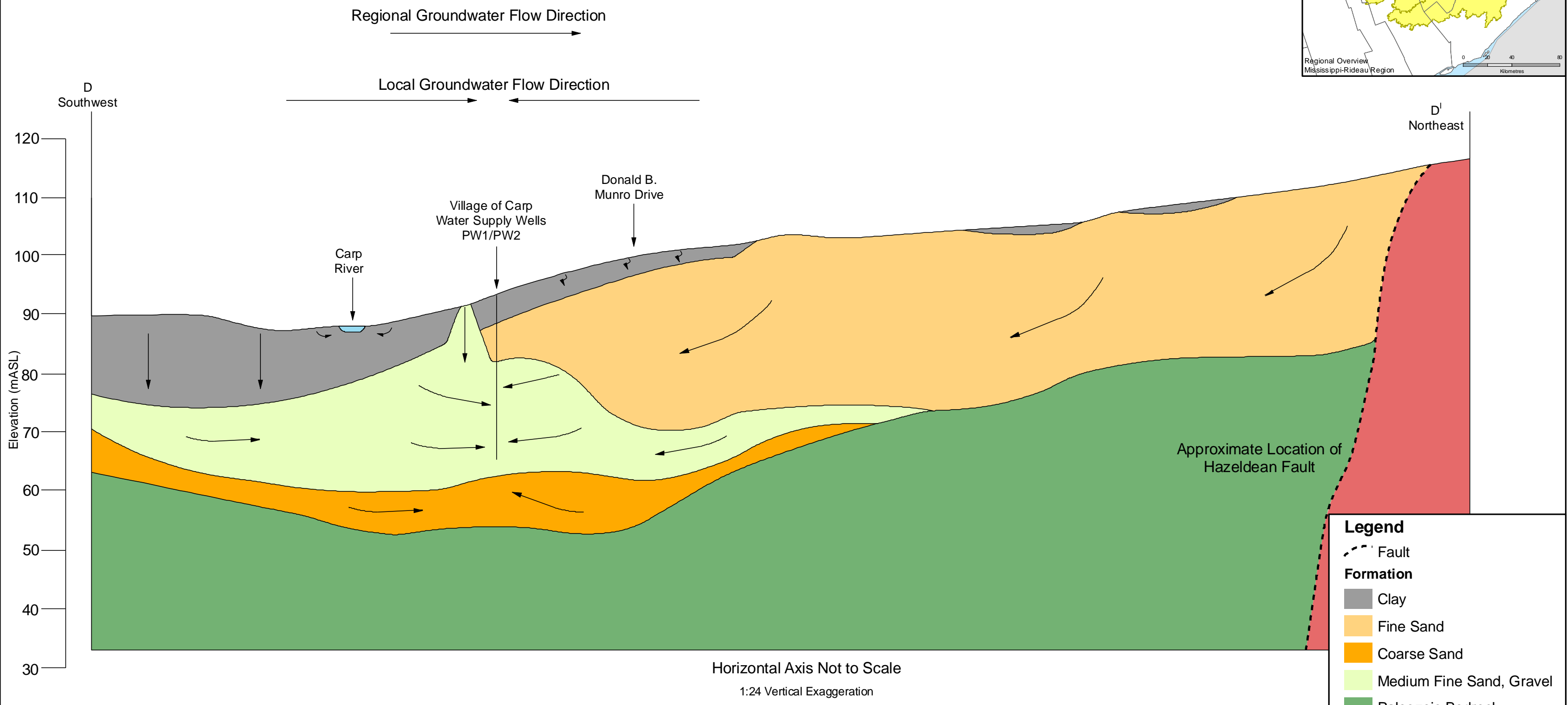
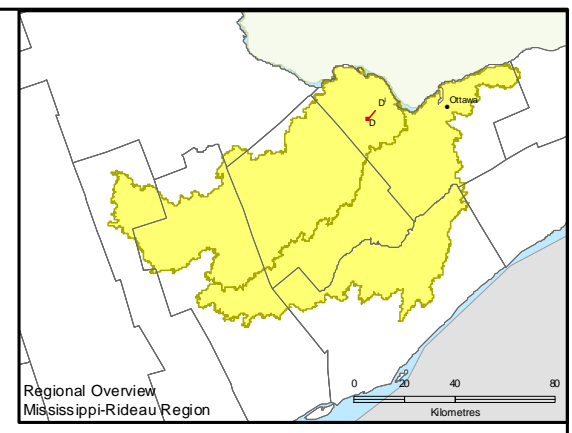


Mississippi-Rideau Source Protection Region



- Legend**
- Fault
 - Formation**
 - Clay
 - Fine Sand
 - Coarse Sand
 - Medium Fine Sand, Gravel
 - Paleozoic Bedrock
 - Precambrian Bedrock
 - Surface River or Lake

Base-mapping and GIS services provided courtesy of the Mississippi-Rideau Source Protection Region, under License with the Ontario Ministry of Natural Resources © Queen's Printer for Ontario, 2008. These maps are the property of the Mississippi-Rideau Source Protection Region, who holds a copyright to them. These maps may be copied or reproduced by other parties provided that the Mississippi-Rideau SPR is properly acknowledged as the original source of the information in any document, report or map in which this mapping is used, and provided that no fee is charged. While the M-R SPR makes every effort to ensure that the information presented is sufficiently accurate for the intended uses of the map, there is an inherent margin of error in all mapping products, and accuracy of the mapping cannot be guaranteed for all possible uses. All end-users must therefore determine for themselves if the information is suitable for their purposes. Made possible by the Government of Ontario.

Source Water PROTECTION

 Date Printed: 04/03/2008

 Printed by: kkamichailis

PRELIMINARY DRAFT
Conceptual Hydrogeologic Cross-Section (D-D')
(Carp Municipal Well)
Figure 3.5-6

Source: Modified from Golder 2003a. This information is regional in nature and not intended for site-specific evaluations. The figure should be used only in conjunction with the accompanying report.