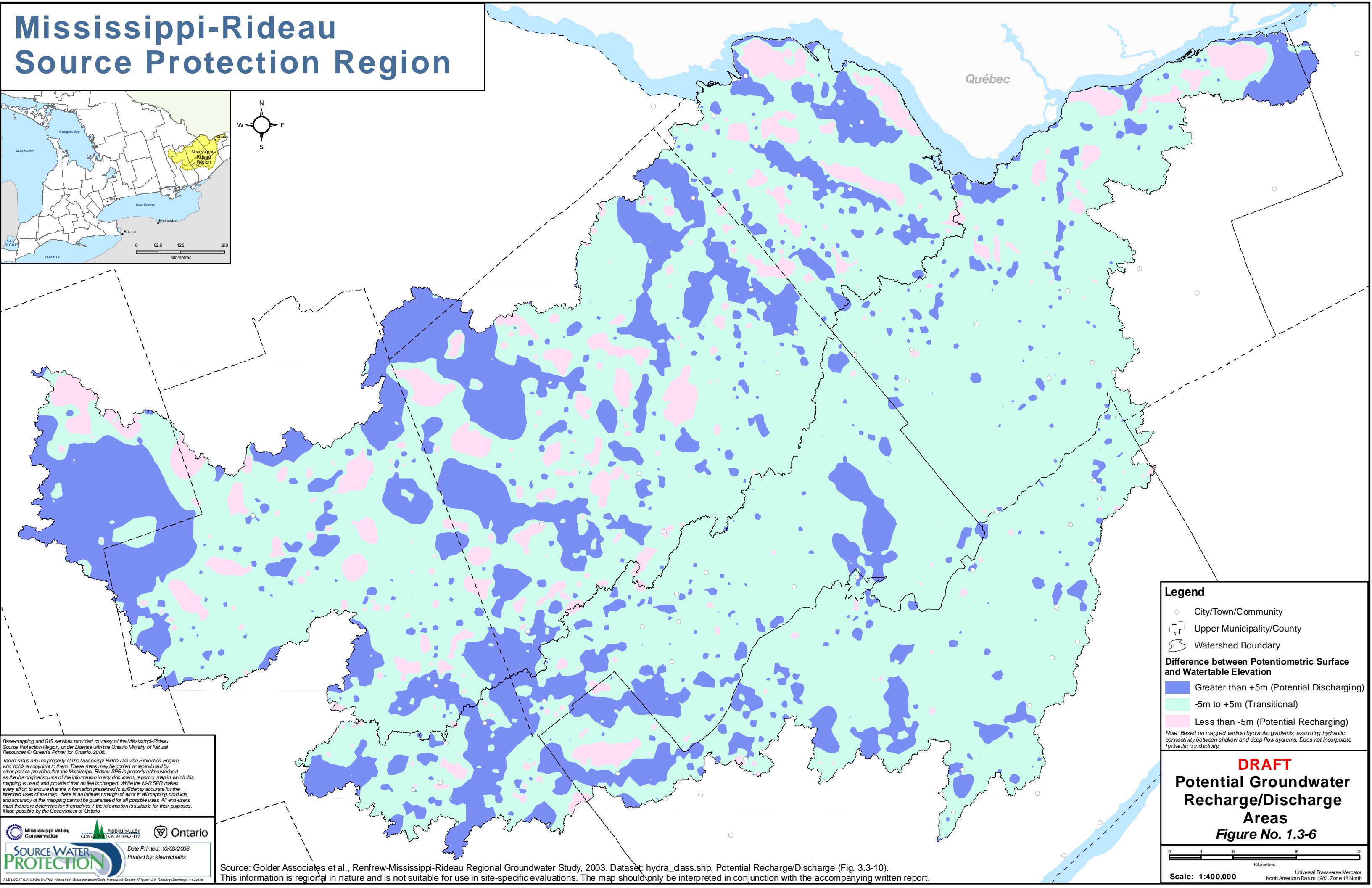
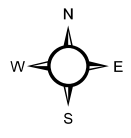


Mississippi-Rideau Source Protection Region



Legend

- City/Town/Community
- ▭ Upper Municipality/County
- ⊃ Watershed Boundary

Difference between Potentiometric Surface and Watertable Elevation

- Greater than +5m (Potential Discharging)
- -5m to +5m (Transitional)
- Less than -5m (Potential Recharging)

Note: Based on mapped vertical hydraulic gradients, assuming hydraulic connectivity between shallow and deep flow systems. Does not incorporate hydraulic conductivity.

DRAFT

Potential Groundwater Recharge/Discharge Areas

Figure No. 1.3-6

Scale: 1:400,000

Universal Transverse Mercator
North American Datum 1983, Zone 18 North

Basemapping and GIS services provided courtesy of the Mississippi-Rideau Source Protection Region, under License with the Ontario Ministry of Natural Resources © Queen's Printer for Ontario, 2008.

These maps are the property of the Mississippi-Rideau Source Protection Region, who holds a copyright to them. These maps may be copied or reproduced by other parties provided that the Mississippi-Rideau SPR is properly acknowledged as the original source of the information in any document, report or map in which this mapping is used, and provided that no fee is charged. While the M-R SPR makes every effort to ensure that the information presented is sufficiently accurate for the intended uses of the map, there is an inherent margin of error in all mapping products, and accuracy of the mapping cannot be guaranteed for all possible uses. All end-users must therefore determine for themselves if the information is suitable for their purposes. Made possible by the Government of Ontario.

SOURCE WATER PROTECTION

Date Printed: 10/03/2008
Printed by: kkamichalis

Source: Golder Associates et al., Renfrew-Mississippi-Rideau Regional Groundwater Study, 2003. Dataset: hydra_dass.shp, Potential Recharge/Discharge (Fig. 3.3-10). This information is regional in nature and is not suitable for use in site-specific evaluations. The map should only be interpreted in conjunction with the accompanying written report.