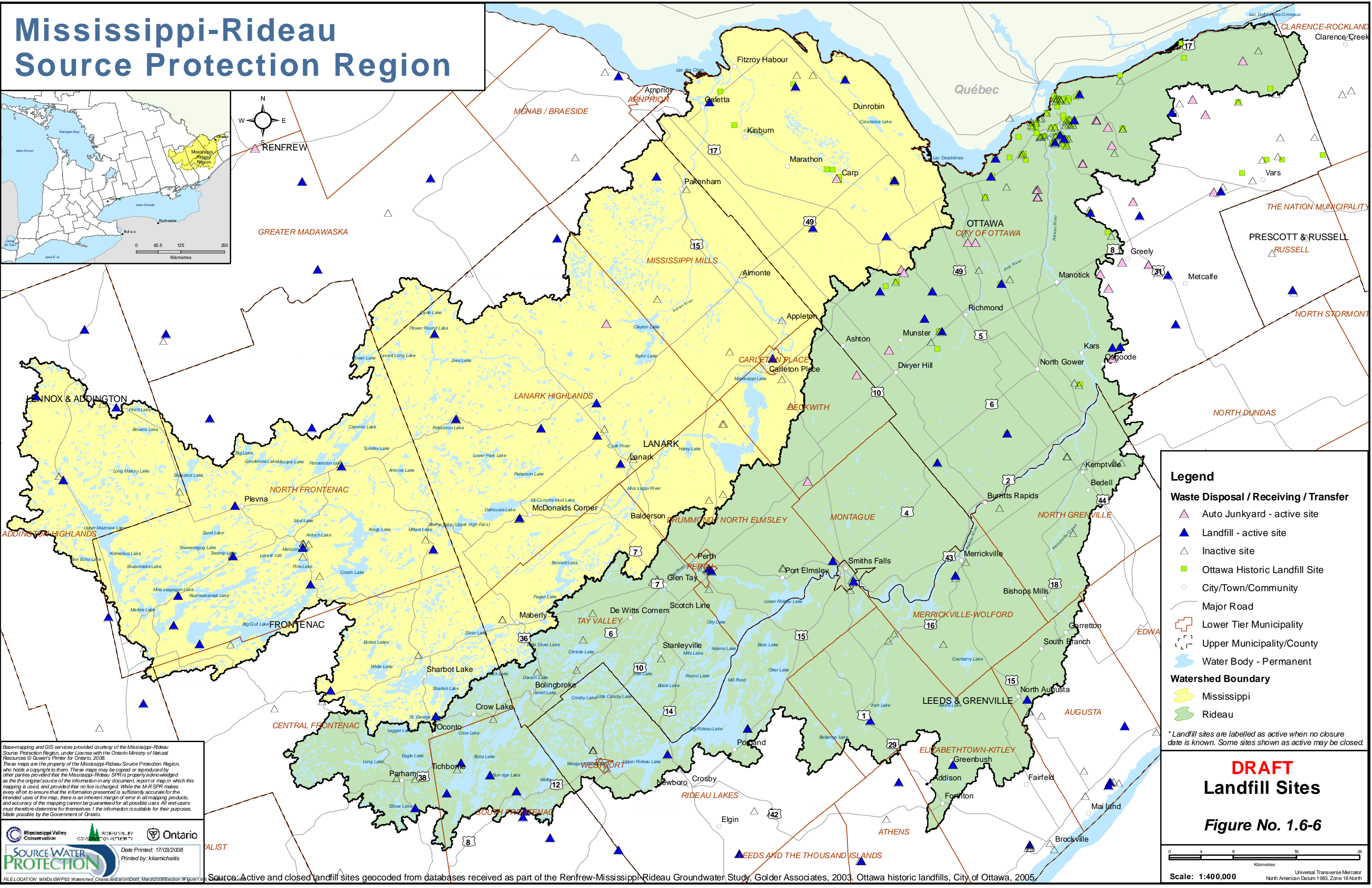
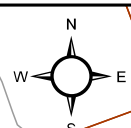
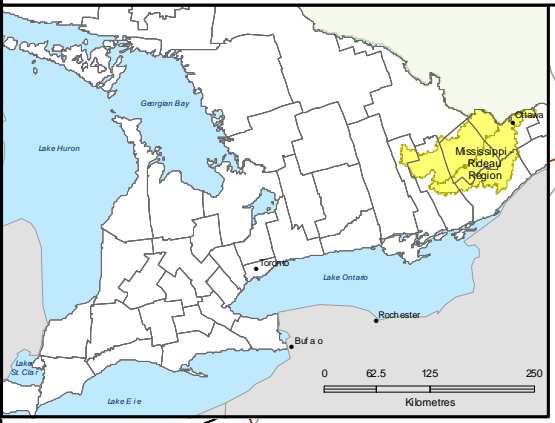


Mississippi-Rideau Source Protection Region



Legend

Waste Disposal / Receiving / Transfer

- Auto Junkyard - active site
- Landfill - active site
- Inactive site
- Ottawa Historic Landfill Site
- City/Town/Community
- Major Road
- Lower Tier Municipality
- Upper Municipality/County
- Water Body - Permanent

Watershed Boundary

- Mississippi
- Rideau

* Landfill sites are labelled as active when no closure date is known. Some sites shown as active may be closed.

Base-mapping and GIS services provided courtesy of the Mississippi-Rideau Source Protection Region, under License with the Ontario Ministry of Natural Resources © Queen's Printer for Ontario, 2008. These maps are the property of the Mississippi-Rideau Source Protection Region, who holds a copyright to them. These maps may be copied or reproduced by other parties provided that the Mississippi-Rideau SPR is properly acknowledged as the original source of the information in any document, report or map in which this mapping is used, and provided that no fee is charged. While the M-R SPR makes every effort to ensure that the information presented is sufficiently accurate for the intended uses of the map, there is an inherent margin of error in all mapping products, and accuracy of the mapping cannot be guaranteed for all possible uses. All end users must therefore determine for themselves if the information is suitable for their purposes. Made possible by the Government of Ontario.

Source Water PROTECTION
Date Printed: 17/03/2008
Printed by: kkamichalis

DRAFT
Landfill Sites
Figure No. 1.6-6

Scale: 1:400,000
Universal Transverse Mercator
North American Datum 1983, Zone 18 North

Source: Active and closed landfill sites geocoded from databases received as part of the Renfrew-Mississippi-Rideau Groundwater Study, Golder Associates, 2003. Ottawa historic landfills, City of Ottawa, 2005.