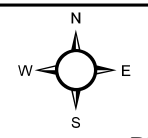
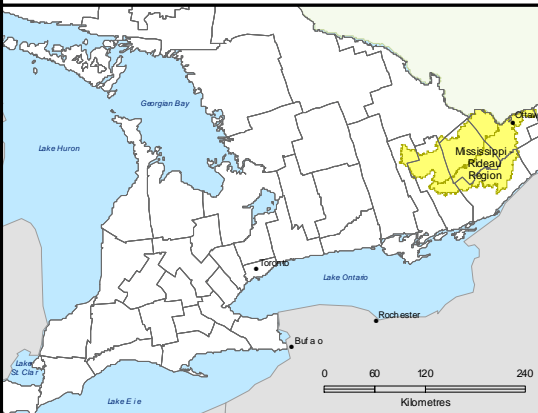
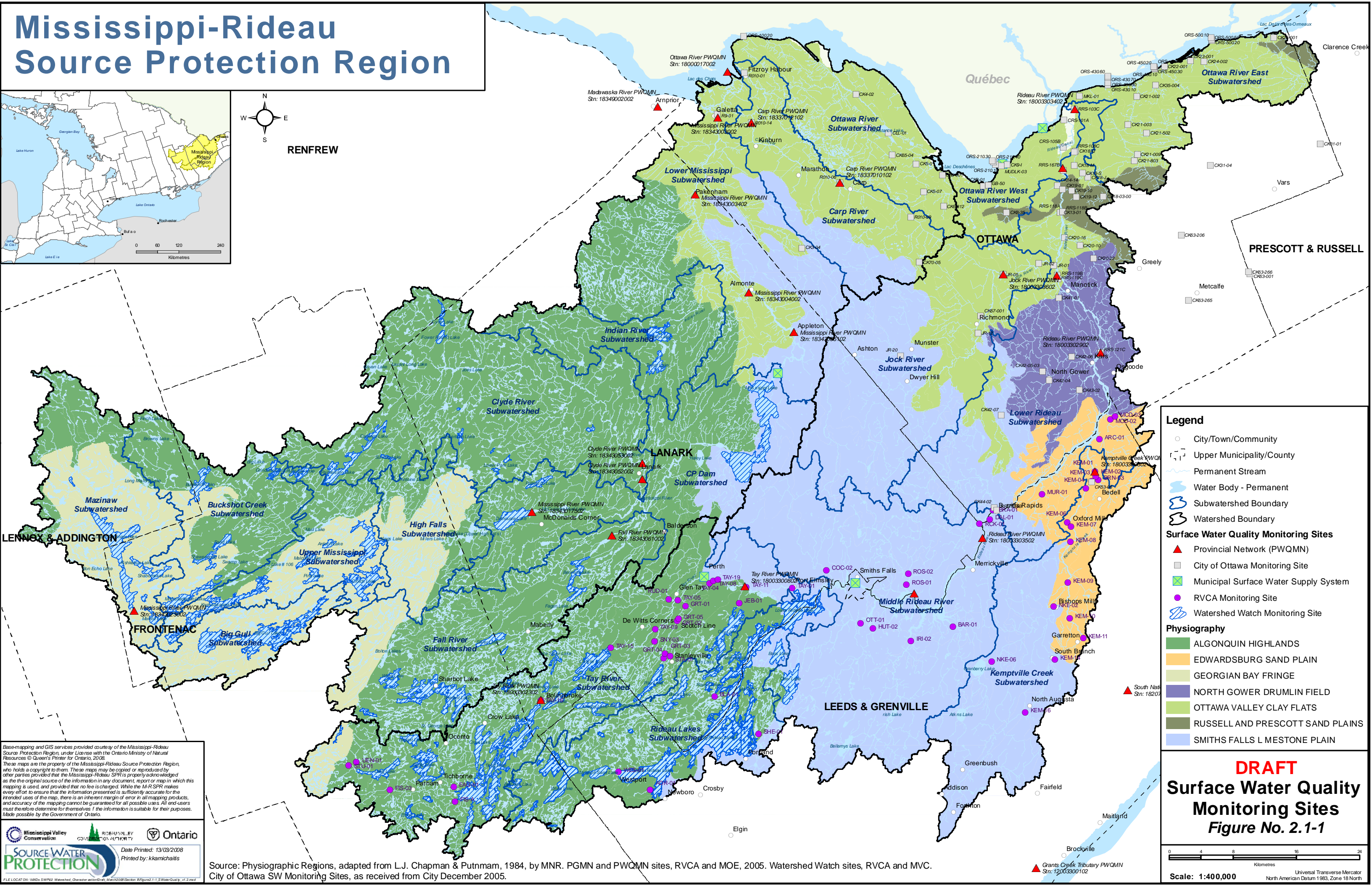


Mississippi-Rideau Source Protection Region



RENFREW



Legend

- City/Town/Community
- Upper Municipality/County
- Permanent Stream
- Water Body - Permanent
- Subwatershed Boundary
- Watershed Boundary

Surface Water Quality Monitoring Sites

- ▲ Provincial Network (PWQMN)
- City of Ottawa Monitoring Site
- ⊠ Municipal Surface Water Supply System
- RVCA Monitoring Site
- ⊞ Watershed Watch Monitoring Site

Physiography

- ALGONQUIN HIGHLANDS
- EDWARDSBURG SAND PLAIN
- GEORGIAN BAY FRINGE
- NORTH GOWER DRUMLIN FIELD
- OTTAWA VALLEY CLAY FLATS
- RUSSELL AND PRESCOTT SAND PLAINS
- SMITHS FALLS L MESTONE PLAIN

DRAFT
Surface Water Quality Monitoring Sites
Figure No. 2.1-1

Base-mapping and GIS services provided courtesy of the Mississippi-Rideau Source Protection Region, under license with the Ontario Ministry of Natural Resources © Queen's Printer for Ontario, 2008. These maps are the property of the Mississippi-Rideau Source Protection Region, who holds a copyright to them. These maps may be copied or reproduced by other parties provided that the Mississippi-Rideau SPR is properly acknowledged as the original source of the information in any document, report or map in which this mapping is used, and provided that no fee is charged. While the M-R SPR makes every effort to ensure that the information presented is sufficiently accurate for the intended uses of the map, there is an inherent margin of error in all mapping products, and accuracy of the mapping cannot be guaranteed for all possible uses. All end-users must therefore determine for themselves if the information is suitable for their purposes. Made possible by the Government of Ontario.

Source Water PROTECTION
 Date Printed: 13/03/2008
 Printed by: kkamichalis

Source: Physiographic Regions, adapted from L.J. Chapman & Putnam, 1984, by MNR. PGMN and PWQMN sites, RVCA and MOE, 2005. Watershed Watch sites, RVCA and MVC. City of Ottawa SW Monitoring Sites, as received from City December 2005.

Scale: 1:400,000
 Universal Transverse Mercator
 North American Datum 1983, Zone 18 North