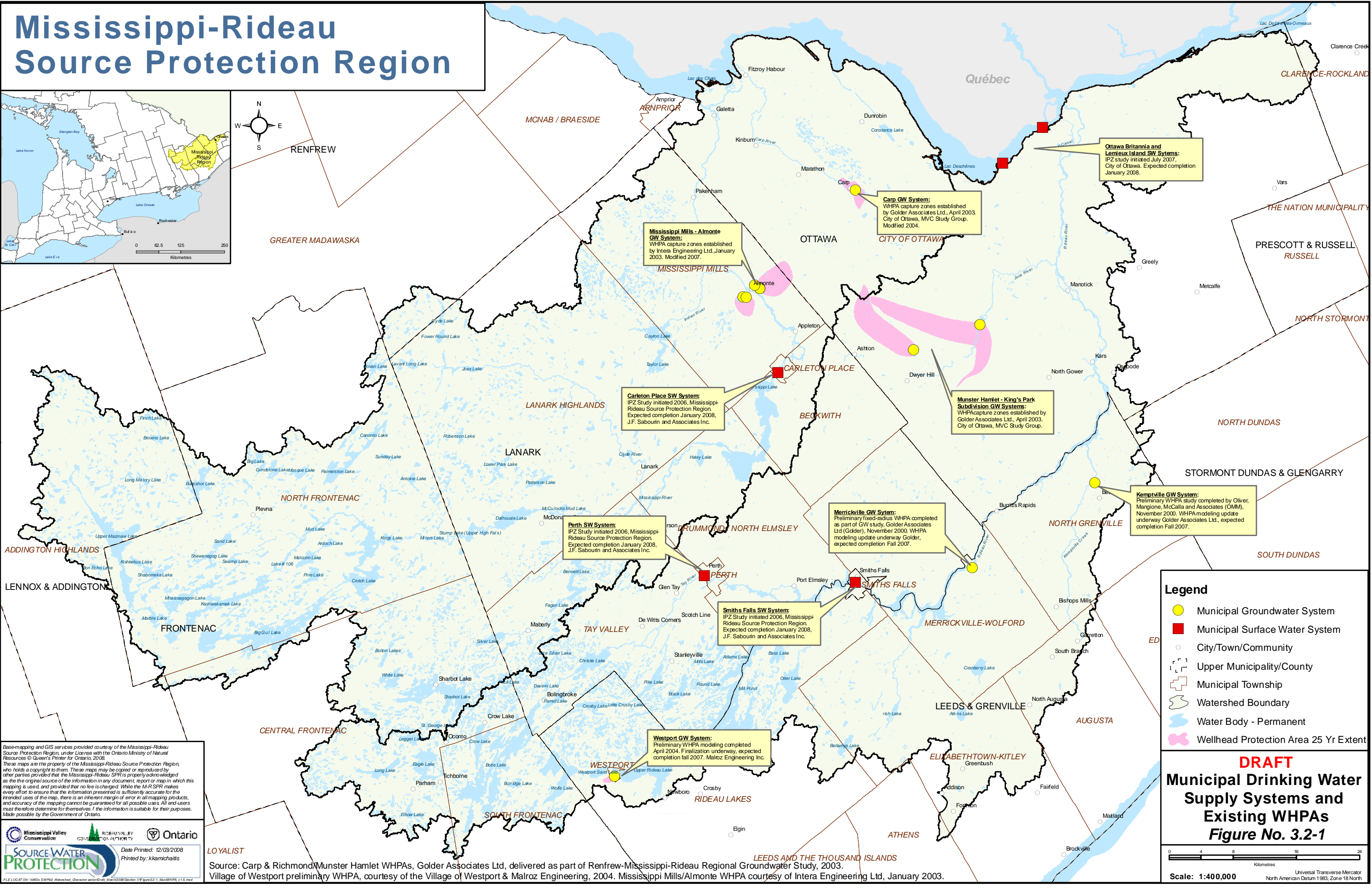
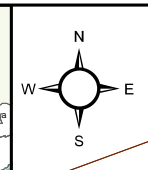
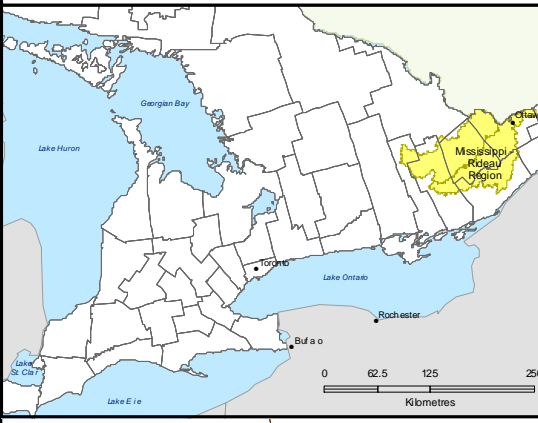


Mississippi-Rideau Source Protection Region



Mississippi Mills - Almonte GW System:
WHPA capture zones established by Intera Engineering Ltd. January 2003. Modified 2007.

Carp GW System:
WHPA capture zones established by Golder Associates Ltd., April 2003. City of Ottawa, MVC Study Group. Modified 2004.

Ottawa Britannia and Lemieux Island SW Systems:
IPZ study initiated July 2007. City of Ottawa. Expected completion January 2008.

Carleton Place SW System:
IPZ Study initiated 2006, Mississippi-Rideau Source Protection Region. Expected completion January 2008, J.F. Sabouin and Associates Inc.

Munster Hamlet - King's Park Subdivision GW Systems:
WHPA capture zones established by Golder Associates Ltd., April 2003. City of Ottawa, MVC Study Group.

Perth SW System:
IPZ Study initiated 2006, Mississippi-Rideau Source Protection Region. Expected completion January 2008, J.F. Sabouin and Associates Inc.

Merrickville GW System:
Preliminary fixed-radius WHPA completed as part of GW study, Golder Associates Ltd (Golder), November 2000. WHPA modeling update underway Golder, expected completion Fall 2007.

Kemptville GW System:
Preliminary WHPA study completed by Oliver, Margione, McCalla and Associates (OMM), November 2000. WHPA modeling update underway Golder Associates Ltd., expected completion Fall 2007.

Smiths Falls SW System:
IPZ Study initiated 2006, Mississippi-Rideau Source Protection Region. Expected completion January 2008, J.F. Sabouin and Associates Inc.

Westport GW System:
Preliminary WHPA modeling completed April 2004. Finalization underway, expected completion fall 2007. Malroz Engineering Inc.

Legend

- Municipal Groundwater System
- Municipal Surface Water System
- City/Town/Community
- Upper Municipality/County
- ⊕ Municipal Township
- ⬭ Watershed Boundary
- ⬭ Water Body - Permanent
- ⬭ Wellhead Protection Area 25 Yr Extent

DRAFT

Municipal Drinking Water Supply Systems and Existing WHPAs

Figure No. 3.2-1

Scale: 1:400,000

Base-mapping and GIS services provided courtesy of the Mississippi-Rideau Source Protection Region, under license with the Ontario Ministry of Natural Resources © Queen's Printer for Ontario, 2008.

These maps are the property of the Mississippi-Rideau Source Protection Region, who holds a copyright to them. These maps may be copied or reproduced by other parties provided that the Mississippi-Rideau SPR is properly acknowledged as the original source of the information in any document, report or map in which this mapping is used, and provided that no fee is charged. While the MRSPR makes every effort to ensure that the information presented is sufficiently accurate for the intended uses of the map, there is an inherent margin of error in all mapping products, and accuracy of the mapping cannot be guaranteed for all possible uses. All end users must therefore determine for themselves if the information is suitable for their purposes. Made possible by the Government of Ontario.

Mississippi Valley Conservation | RIDEAU VALLEY | Ontario

DATE PRINTED: 12/03/2008
Printed by: kkamichalis

Source: Carp & Richmond/Munster Hamlet WHPAs, Golder Associates Ltd, delivered as part of Renfrew-Mississippi-Rideau Regional Groundwater Study, 2003. Village of Westport preliminary WHPA, courtesy of the Village of Westport & Malroz Engineering, 2004. Mississippi Mills/Almonte WHPA courtesy of Intera Engineering Ltd, January 2003.