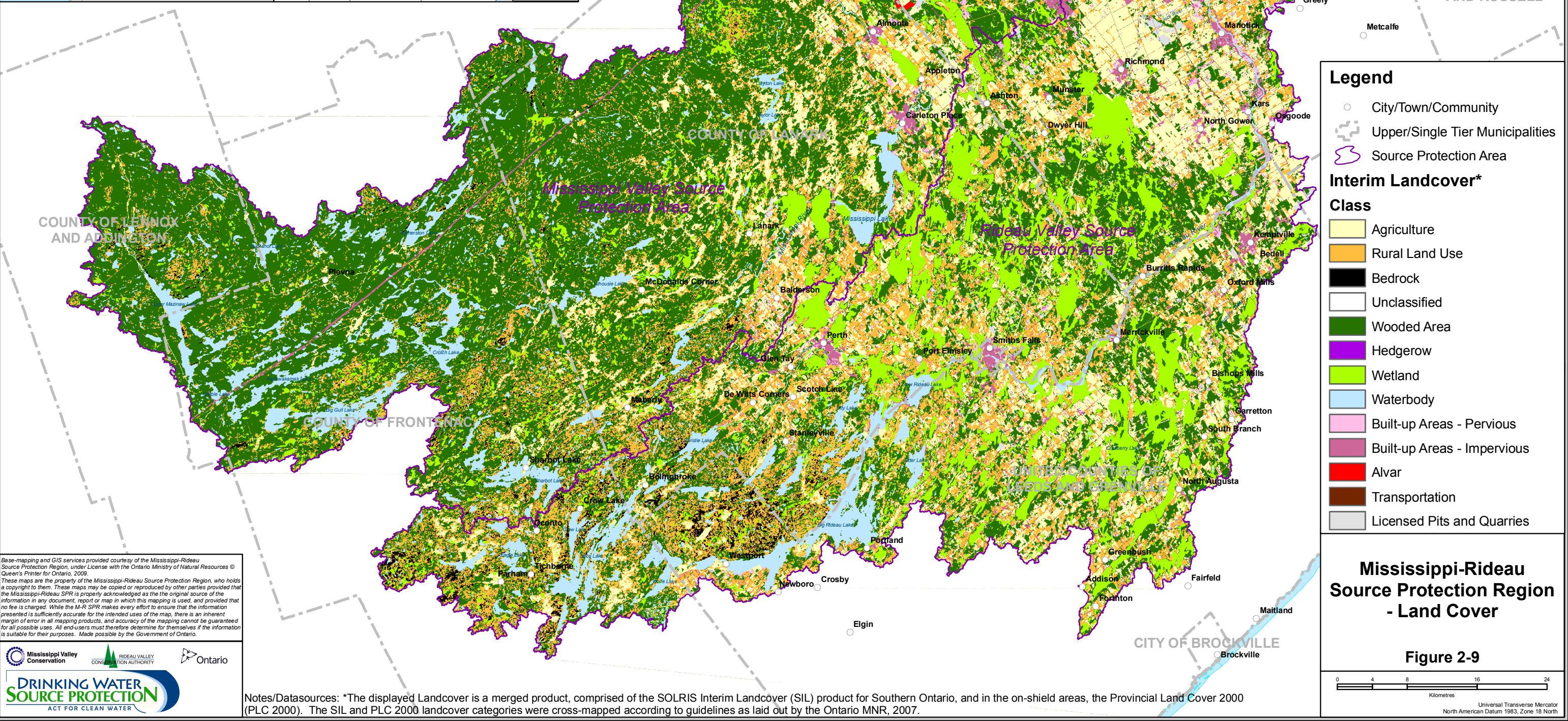
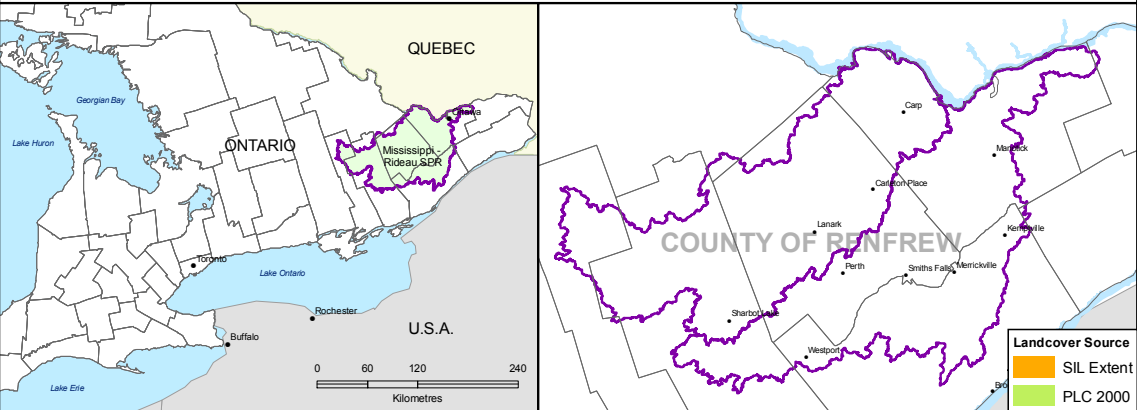


Mississippi-Rideau Source Protection Region



Legend

- City/Town/Community
- Upper/Single Tier Municipalities
- Source Protection Area

Interim Landcover*

Class

- Agriculture
- Rural Land Use
- Bedrock
- Unclassified
- Wooded Area
- Hedgerow
- Wetland
- Waterbody
- Built-up Areas - Pervious
- Built-up Areas - Impervious
- Alvar
- Transportation
- Licensed Pits and Quarries

Mississippi-Rideau Source Protection Region - Land Cover

Figure 2-9

Base-mapping and GIS services provided courtesy of the Mississippi-Rideau Source Protection Region, under License with the Ontario Ministry of Natural Resources © Queen's Printer for Ontario, 2009.

These maps are the property of the Mississippi-Rideau Source Protection Region, who holds a copyright to them. These maps may be copied or reproduced by other parties provided that the Mississippi-Rideau SPR is properly acknowledged as the original source of the information in any document, report or map in which this mapping is used, and provided that no fee is charged. While the M-R SPR makes every effort to ensure that the information presented is sufficiently accurate for the intended uses of the map, there is an inherent margin of error in all mapping products, and accuracy of the mapping cannot be guaranteed for all possible uses. All end-users must therefore determine for themselves if the information is suitable for their purposes. Made possible by the Government of Ontario.

Mississippi Valley Conservation

RIDEAU VALLEY CONSERVATION AUTHORITY

Ontario

DRINKING WATER SOURCE PROTECTION

ACT FOR CLEAN WATER

Notes/Datasources: *The displayed Landcover is a merged product, comprised of the SOLRIS Interim Landcover (SIL) product for Southern Ontario, and in the on-shield areas, the Provincial Land Cover 2000 (PLC 2000). The SIL and PLC 2000 landcover categories were cross-mapped according to guidelines as laid out by the Ontario MNR, 2007.