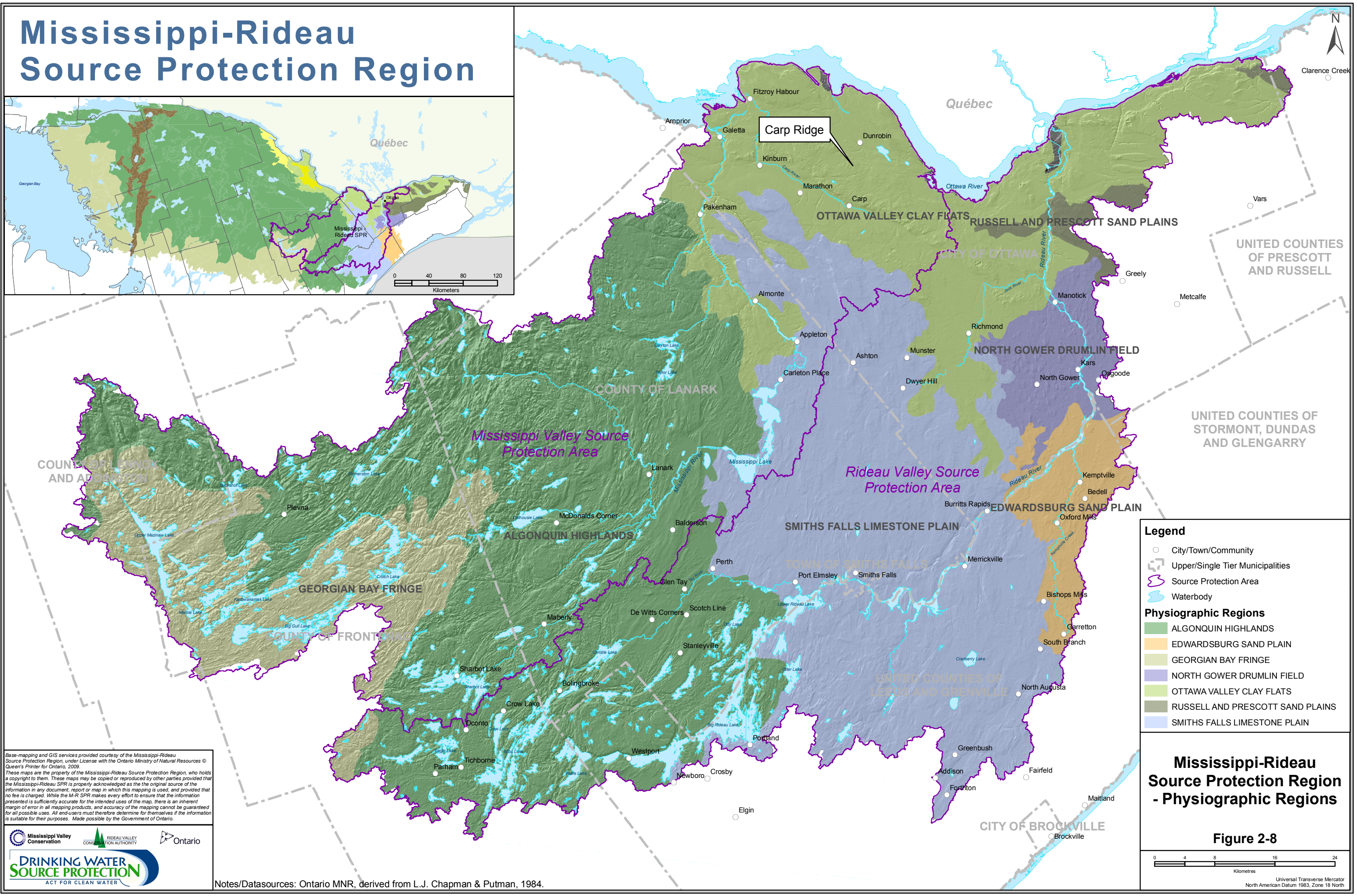


Map of the Mississippi River Delta and surrounding regions. The map shows the Mississippi River Delta (MRD) in green, the Mississippi River (MR) in blue, and the Mississippi River Delta National Wildlife Refuge (MRD NWR) in yellow. The Gulf of Mexico is to the south. The map includes a scale bar from 0 to 120 Kilometers and labels for 'Québec', 'Orleans', and 'Mississippi River Delta SPR'.



Base-mapping and GIS services provided courtesy of the Mississippi-Rideau Source Protection Region, under License with the Ontario Ministry of Natural Resources © Queen's Printer for Ontario, 2009.

These maps are the property of the Mississippi-Rideau Source Protection Region, who holds a copyright to them. These maps may be copied or reproduced by other parties provided that the Province of Ontario is properly acknowledged as the original source of the information in any document, report or map in which this mapping is used, and provided that no fee is charged. While the M-R SPR makes every effort to ensure that the information presented is sufficiently accurate for the intended uses of the map, there is an inherent margin of error in any mapping process and the Province of Ontario does not warrant or guarantee all possible uses. All end-users must therefore determine for themselves if the information is suitable for their purposes. Made possible by the Government of Ontario.



Notes/Datasources: Ontario MNR, derived from L.J. Chapman & Putman, 1984

**Mississippi-Rideau
Source Protection Region
- Physiographic Regions**

Figure 2-8

