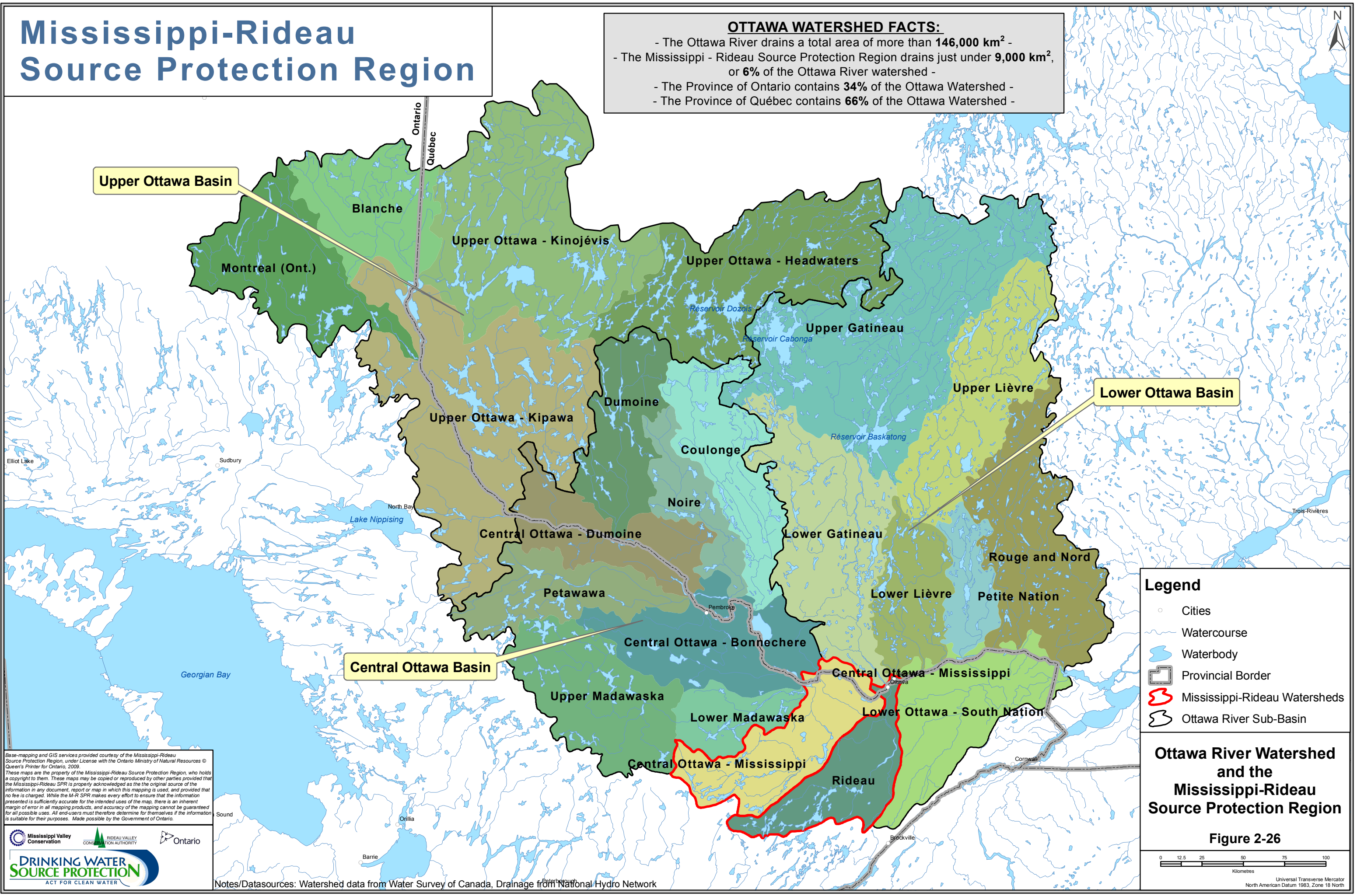


Mississippi-Rideau Source Protection Region

OTTAWA WATERSHED FACTS:

- The Ottawa River drains a total area of more than **146,000 km²** -
- The Mississippi - Rideau Source Protection Region drains just under **9,000 km²**, or **6%** of the Ottawa River watershed -
- The Province of Ontario contains **34%** of the Ottawa Watershed -
- The Province of Québec contains **66%** of the Ottawa Watershed -



Base-mapping and GIS services provided courtesy of the Mississippi-Rideau Source Protection Region, under License with the Ontario Ministry of Natural Resources © Queen's Printer for Ontario, 2009.

These maps are the property of the Mississippi-Rideau Source Protection Region, who holds a copyright to them. These maps may be copied or reproduced by other parties provided that the Mississippi-Rideau SPR is properly acknowledged as the original source of the information in any document, report or map in which this mapping is used, and provided that no fee is charged. While the M-R SPR makes every effort to ensure that the information presented is sufficiently accurate for the intended uses of the map, there is an inherent margin of error in all mapping products, and accuracy of the mapping cannot be guaranteed for all possible uses. All end-users must therefore determine for themselves if the information is suitable for their purposes. Made possible by the Government of Ontario.

DRINKING WATER SOURCE PROTECTION
ACT FOR CLEAN WATER

Notes/Datasources: Watershed data from Water Survey of Canada, Drainage from National Hydro Network

Legend

- Cities
- Watercourse
- Waterbody
- Provincial Border
- Red outline Mississippi-Rideau Watersheds
- Black outline Ottawa River Sub-Basin

Ottawa River Watershed and the Mississippi-Rideau Source Protection Region

Figure 2-26

0 12.5 25 50 75 100
Kilometres

Universal Transverse Mercator
North American Datum 1983, Zone 18 North