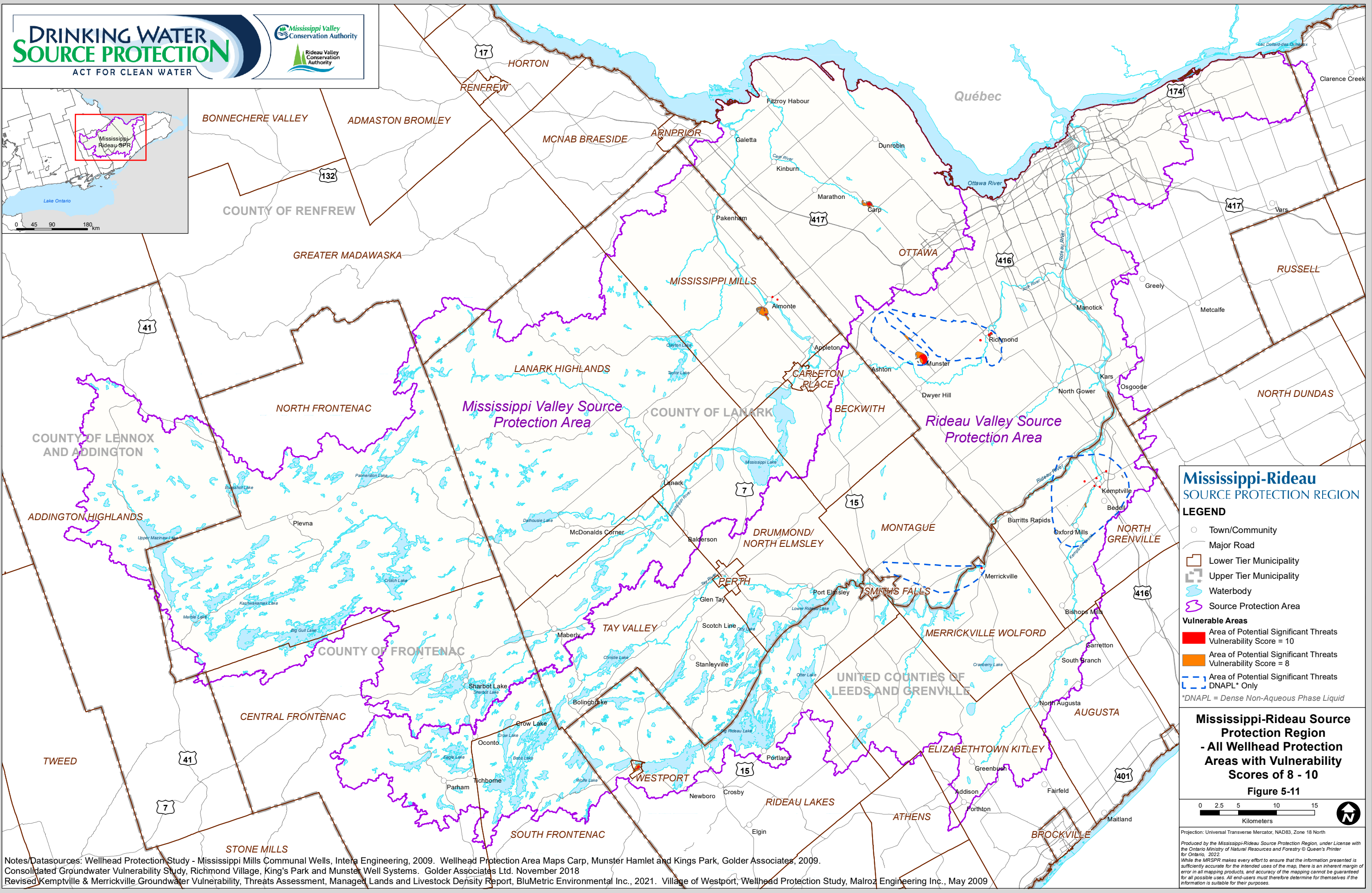


0 45 90 180 km



**Mississippi-Rideau
SOURCE PROTECTION REGION**

LEGEND

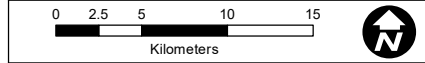
- Town/Community
- Major Road
- Lower Tier Municipality
- Upper Tier Municipality
- Waterbody
- Source Protection Area

Vulnerable Areas

- Area of Potential Significant Threats
Vulnerability Score = 10
- Area of Potential Significant Threats
Vulnerability Score = 8
- Area of Potential Significant Threats
DNAPL* Only

*DNAPL = Dense Non-Aqueous Phase Liquid

**Mississippi-Rideau Source
Protection Region
- All Wellhead Protection
Areas with Vulnerability
Scores of 8 - 10**
Figure 5-11



Projection: Universal Transverse Mercator, NAD83, Zone 18 North
Produced by the Mississippi-Rideau Source Protection Region, under License with the Ontario Ministry of Natural Resources and Forestry © Queen's Printer for Ontario, 2022.
While the MRSPR makes every effort to ensure that the information presented is sufficiently accurate for the intended uses of the map, there is an inherent margin of error in all mapping products, and accuracy of the mapping cannot be guaranteed for all possible uses. All end-users must therefore determine for themselves if the information is suitable for their purposes.

Notes/Datasources: Wellhead Protection Study - Mississippi Mills Communal Wells, Intera Engineering, 2009. Wellhead Protection Area Maps, Munster Hamlet and Kings Park, Golder Associates, 2009. Consolidated Groundwater Vulnerability Study, Richmond Village, King's Park and Munster Well Systems. Golder Associates Ltd. November 2018. Revised Kemptville & Merrickville Groundwater Vulnerability, Threats Assessment, Managed Lands and Livestock Density Report, BluMetric Environmental Inc., 2021. Village of Westport, Wellhead Protection Study, Malroz Engineering Inc., May 2009