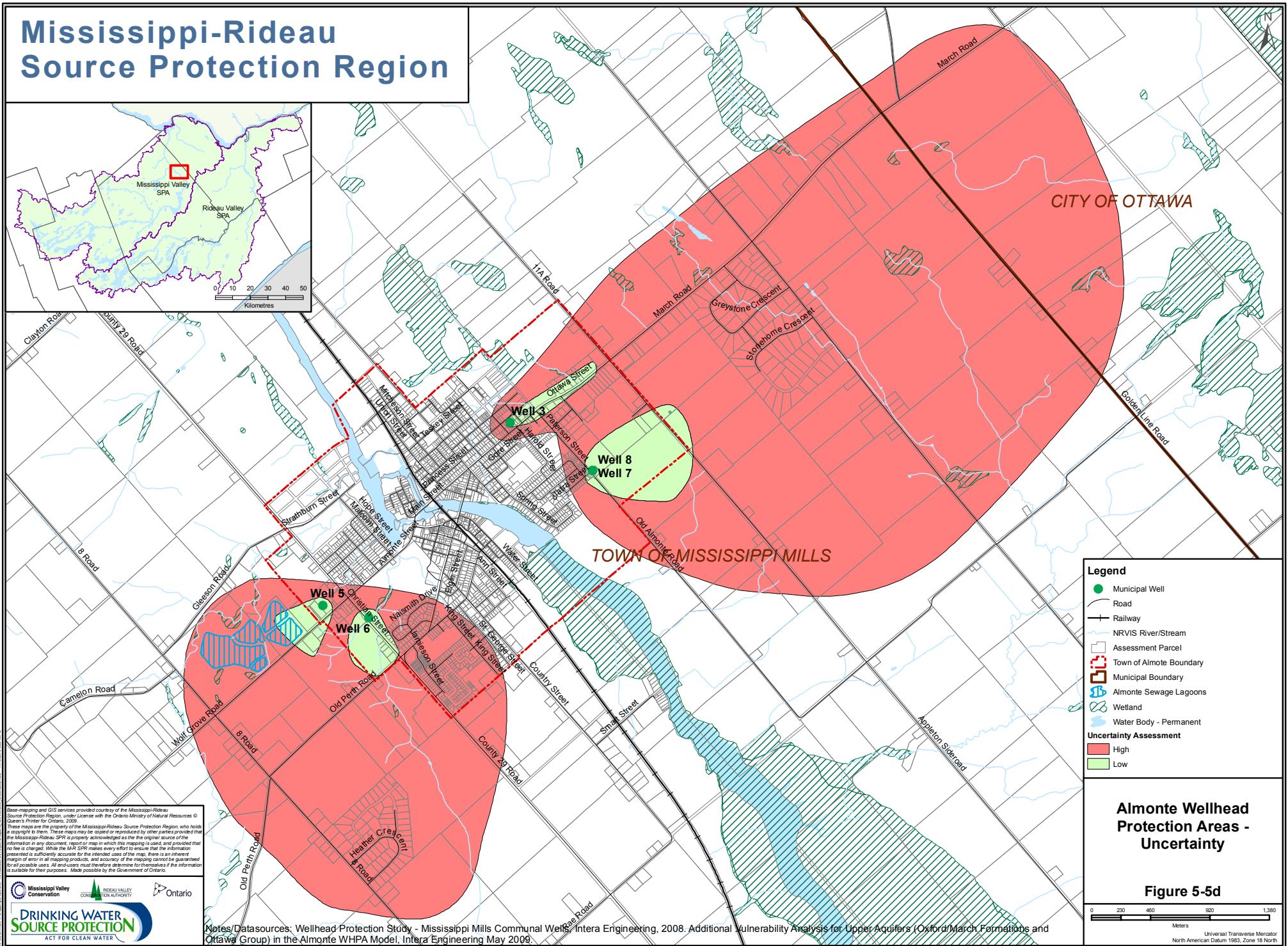
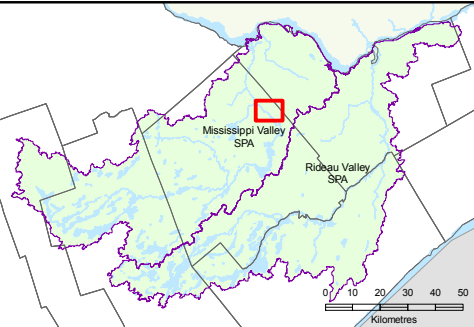


# Mississippi-Rideau Source Protection Region



- Legend**
- Municipal Well
  - Road
  - Railway
  - NRVIS River/Stream
  - Assessment Parcel
  - Town of Almonte Boundary
  - Municipal Boundary
  - Almonte Sewage Lagoons
  - Wetland
  - Water Body - Permanent
  - Uncertainty Assessment
    - High
    - Low

## Almonte Wellhead Protection Areas - Uncertainty

Figure 5-5d



Base mapping and GIS services provided courtesy of the Mississippi-Rideau Source Protection Region, under License with the Ontario Ministry of Natural Resources © Queen's Printer for Ontario, 2009.

These maps are the property of the Mississippi-Rideau Source Protection Region, who holds a copyright to them. These maps may be copied or reproduced by other parties provided that the Mississippi-Rideau SPA is properly acknowledged as the original source of the information in any document, report or map in which this mapping is used, and provided that no fee is charged. While the MRS-SPR makes every effort to ensure that the information presented is sufficiently accurate for the intended uses of the map, there is an inherent margin of error in all mapping products, and accuracy of the mapping cannot be guaranteed for all possible uses. All users must therefore determine for themselves if the information is suitable for their purposes. Made possible by the Government of Ontario.

Mississippi Valley Conservation  
RIDEAU VALLEY  
CONSERVATION AUTHORITY  
Ontario

**DRINKING WATER SOURCE PROTECTION**  
ACT FOR CLEAN WATER

Notes/Datasources: Wellhead Protection Study - Mississippi Mills Communal Wells, Intera Engineering, 2008. Additional Vulnerability Analysis for Upper Aquifers (Oxford/March Formations and Ottawa Group) in the Almonte WHPA Model, Intera Engineering May 2009.