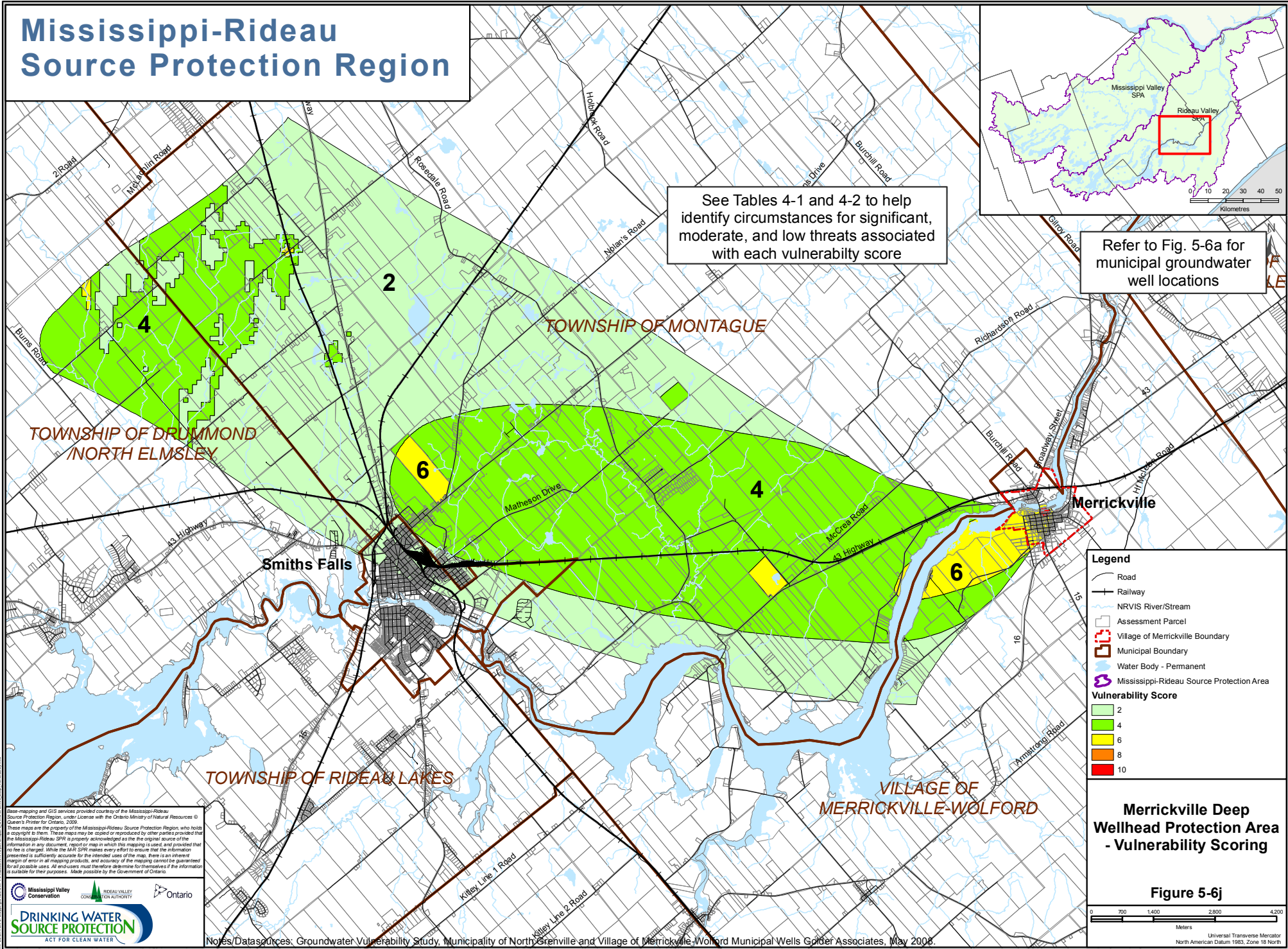


# Mississippi-Rideau Source Protection Region



See Tables 4-1 and 4-2 to help identify circumstances for significant, moderate, and low threats associated with each vulnerability score

Refer to Fig. 5-6a for municipal groundwater well locations

**Legend**

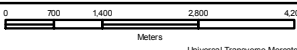
- Road
- Railway
- NRVIS River/Stream
- Assessment Parcel
- ▭ Village of Merrickville Boundary
- ▭ Municipal Boundary
- ▭ Water Body - Permanent
- ▭ Mississippi-Rideau Source Protection Area

**Vulnerability Score**

- 2
- 4
- 6
- 8
- 10

**Merrickville Deep Wellhead Protection Area - Vulnerability Scoring**

**Figure 5-6j**



Base mapping and GIS services provided courtesy of the Mississippi-Rideau Source Protection Region, under license with the Ontario Ministry of Natural Resources © Queen's Printer for Ontario, 2008. These maps are the property of the Mississippi-Rideau Source Protection Region, who holds a copyright to them. These maps may be copied or reproduced by other parties provided that the Mississippi-Rideau SPA is properly acknowledged as the original source of the information in any document, report or map in which this mapping is used, and provided that no fee is charged. While the MRSP makes every effort to ensure that the information presented is sufficiently accurate for the intended uses of the map, there is an inherent margin of error in all mapping products, and accuracy of the mapping cannot be guaranteed for all possible uses. All end users must therefore determine for themselves if the information is suitable for their purposes. Made possible by the Government of Ontario.



Notes/Data Sources: Groundwater Vulnerability Study, Municipality of North Grenville and Village of Merrickville-Wolford Municipal Wells Governer Associates, May 2008.