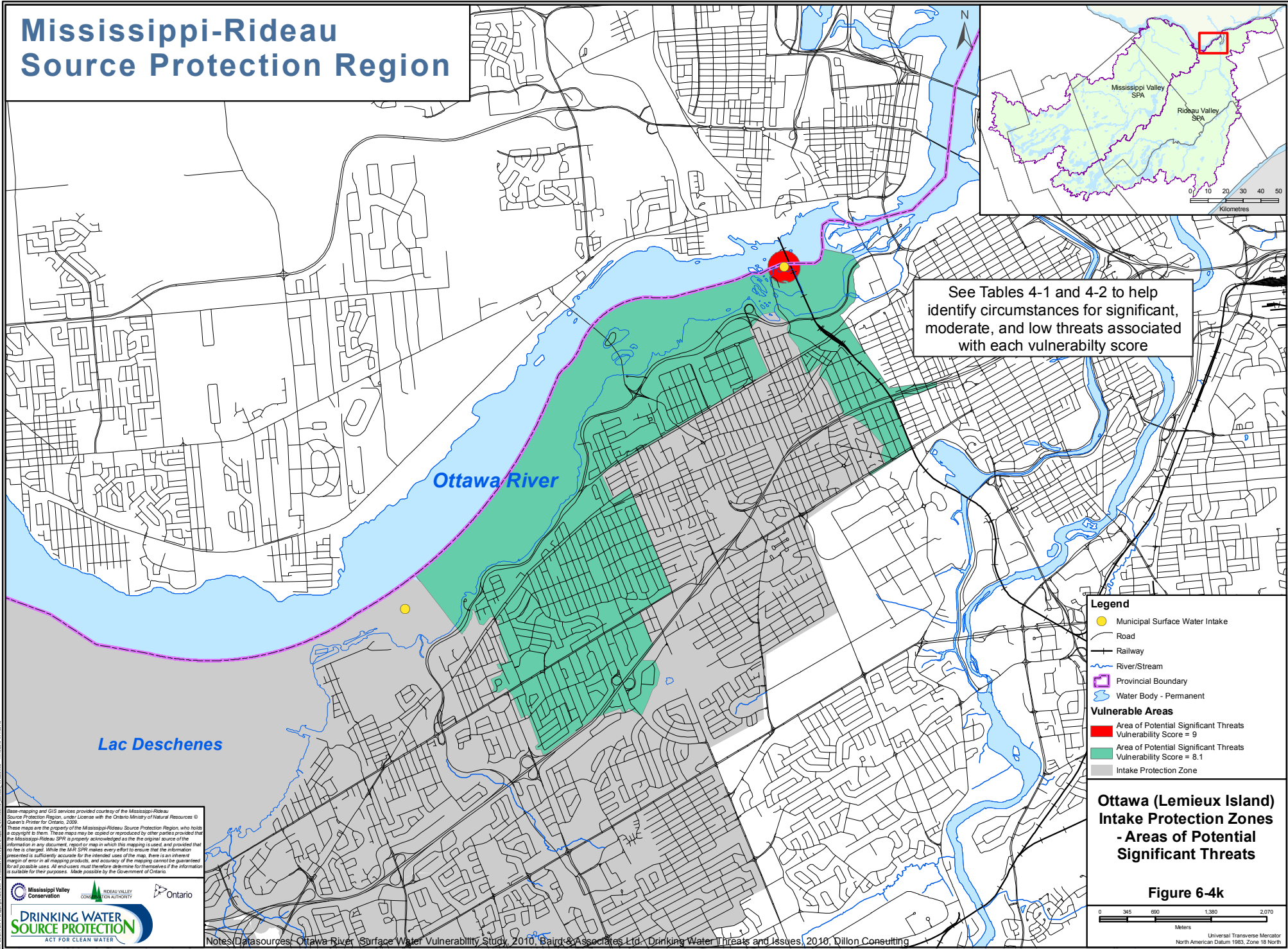


Mississippi-Rideau Source Protection Region



See Tables 4-1 and 4-2 to help identify circumstances for significant, moderate, and low threats associated with each vulnerability score

Legend

- Municipal Surface Water Intake
- Road
- Railway
- River/Stream
- Provincial Boundary
- Water Body - Permanent

Vulnerable Areas

- Area of Potential Significant Threats
Vulnerability Score = 9
- Area of Potential Significant Threats
Vulnerability Score = 8.1
- Intake Protection Zone

Ottawa (Lemieux Island) Intake Protection Zones - Areas of Potential Significant Threats

Figure 6-4k

0 345 690 1380 2070
Meters

Universal Transverse Mercator
North American Datum 1983, Zone 18 North

Base mapping and GIS services provided courtesy of the Mississippi-Rideau Source Protection Region, under license with the Ontario Ministry of Natural Resources © Queen's Printer for Ontario, 2008. These maps are the property of the Mississippi-Rideau Source Protection Region, who holds a copyright to them. These maps may be copied or reproduced by other parties provided that the Mississippi-Rideau SPA is properly acknowledged as the original source of the information in any document, report or map in which this mapping is used, and provided that the fee is charged. While the MRSP makes every effort to ensure that the information presented is sufficiently accurate for the intended uses of the map, there is an inherent margin of error in all mapping products, and accuracy of the mapping cannot be guaranteed for all possible uses. All end users must therefore determine for themselves if the information is suitable for their purposes. Made possible by the Government of Ontario.

DRINKING WATER SOURCE PROTECTION
ACT FOR CLEAN WATER