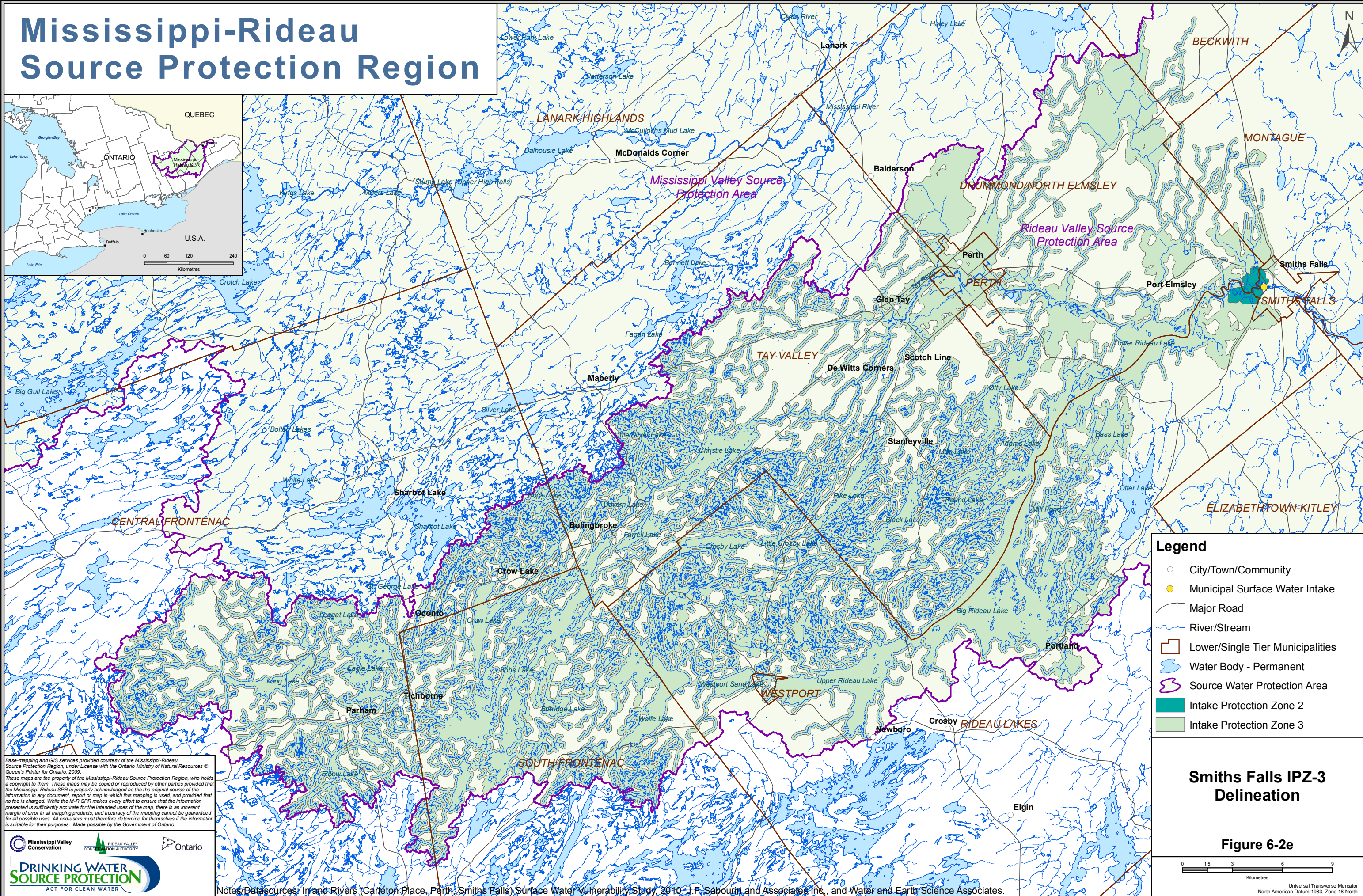
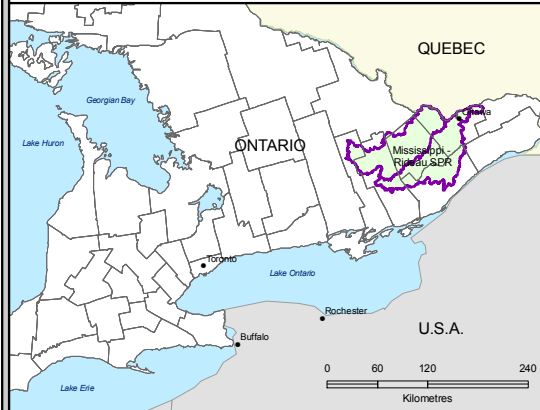


Mississippi-Rideau Source Protection Region

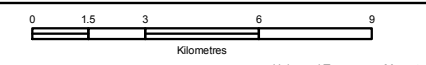


Legend

- City/Town/Community
- Municipal Surface Water Intake
- Major Road
- River/Stream
- ▭ Lower/Single Tier Municipalities
- Water Body - Permanent
- ▭ Source Water Protection Area
- Intake Protection Zone 2
- Intake Protection Zone 3

Smiths Falls IPZ-3 Delineation

Figure 6-2e



Base-mapping and GIS services provided courtesy of the Mississippi-Rideau Source Protection Region, under License with the Ontario Ministry of Natural Resources © Queen's Printer for Ontario, 2009.

These maps are the property of the Mississippi-Rideau Source Protection Region, who holds the copyright to them. These maps may be copied or reproduced by other parties provided that the Mississippi-Rideau SPR is properly acknowledged as the original source of the information in any document, report or map in which this mapping is used, and provided that no fee is charged. While the M-R SPR makes every effort to ensure that the information presented is sufficiently accurate for the intended uses of the map, there is an inherent margin of error in all mapping products, and accuracy of the mapping cannot be guaranteed for all possible uses. All end-users must therefore determine for themselves if the information is suitable for their purposes. Made possible by the Government of Ontario.

DRINKING WATER SOURCE PROTECTION
ACT FOR CLEAN WATER

Notes/Data sources: Inland Rivers (Carleton Place, Perth, Smiths Falls) Surface Water Vulnerability Study, 2010, J.F. Sabourin and Associates Inc., and Water and Earth Science Associates.

Universal Transverse Mercator
North American Datum 1983, Zone 18 North