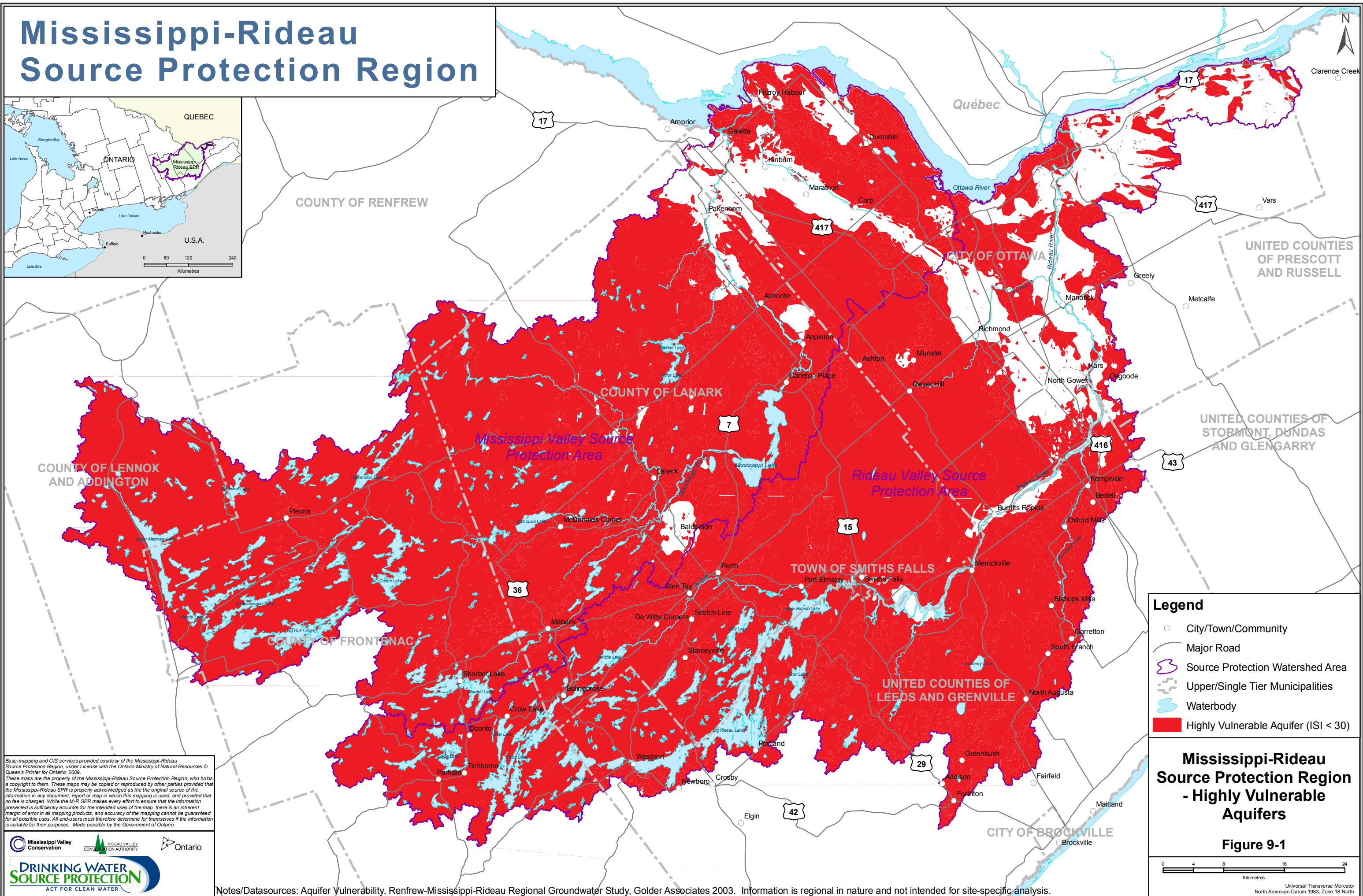


A map of the Great Lakes region of North America. The map shows the five Great Lakes: Lake Huron, Lake Michigan, Lake Erie, Lake Ontario, and Lake Superior. The land area is divided into political boundaries. Ontario, Canada, is labeled in the center. To the north is Quebec, and to the south is the U.S. A purple-shaded area within Ontario is labeled 'Mississippi, Rideau, & R.' This area is located in the eastern part of Ontario, near the border with the U.S. and Lake Ontario. Major cities are marked with black dots: Toronto, Buffalo, and Rochester. A scale bar at the bottom right shows distances in Kilometres, with markings at 0, 60, 120, and 240.



Notes/Datasources: Aquifer Vulnerability, Renfrew-Mississippi-Rideau Regional Groundwater Study, Golder Associates 2003. Information is regional in nature and not intended for site-specific analysis.