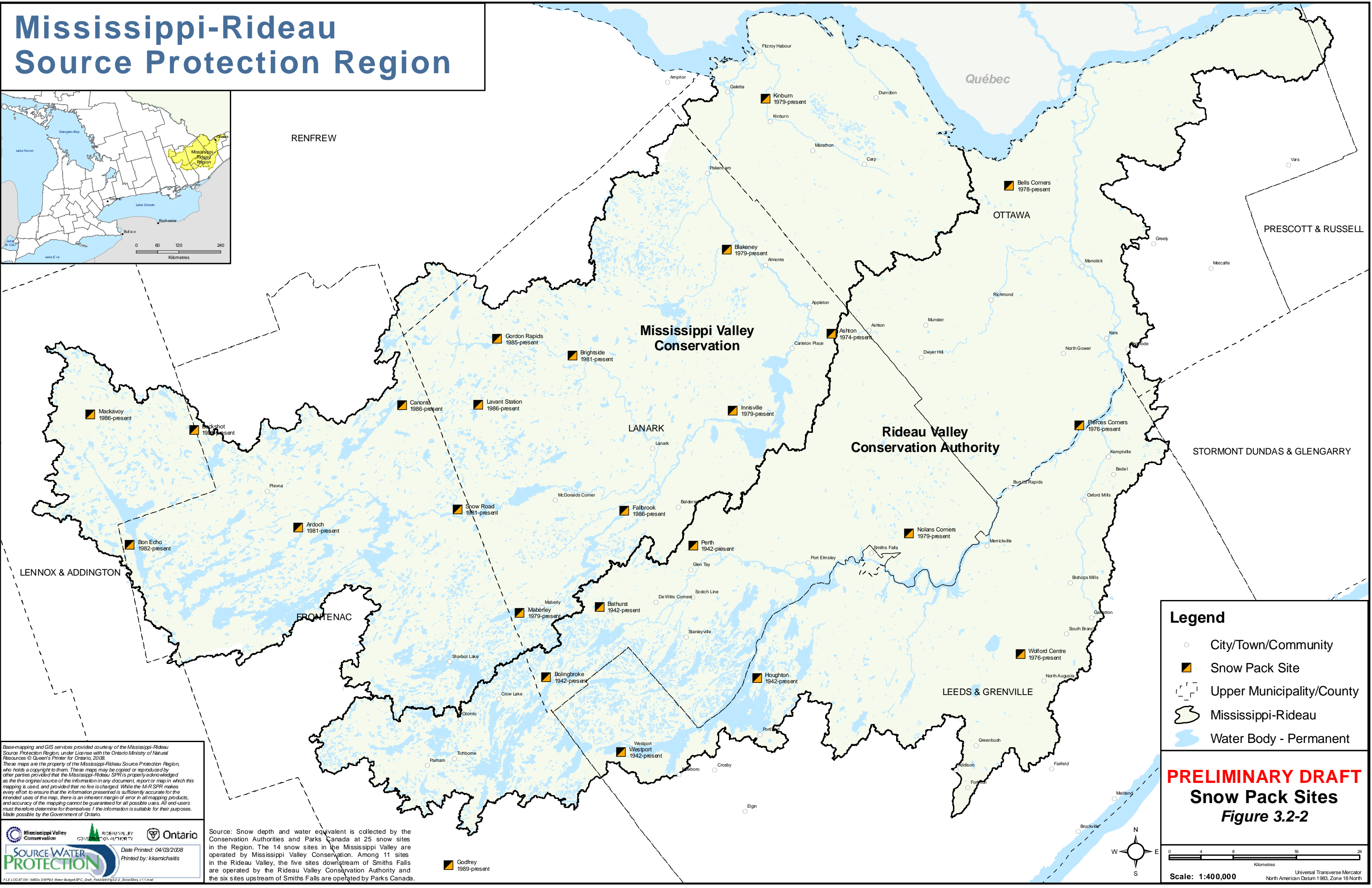
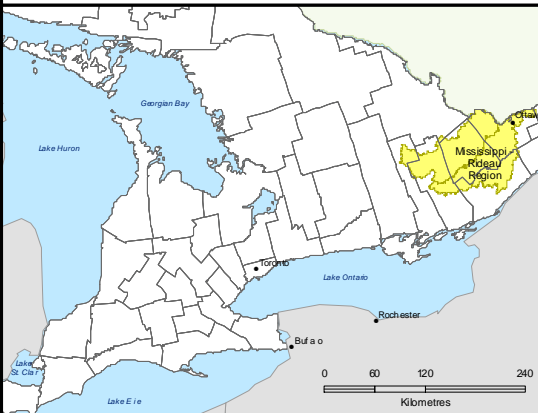


# Mississippi-Rideau Source Protection Region



**Legend**

- City/Town/Community
- Snow Pack Site
- Upper Municipality/County
- Mississippi-Rideau
- Water Body - Permanent

PRELIMINARY DRAFT

Snow Pack Sites

Figure 3.2-2

Scale: 1:400,000

Universal Transverse Mercator  
North American Datum 1983, Zone 18 North

Base-mapping and GIS services provided courtesy of the Mississippi-Rideau Source Protection Region, under License with the Ontario Ministry of Natural Resources © Queen's Printer for Ontario, 2008.  
These maps are the property of the Mississippi-Rideau Source Protection Region, who holds a copyright to them. These maps may be copied or reproduced by other parties provided that the Mississippi-Rideau SPR is properly acknowledged as the original source of the information in any document, report or map in which this mapping is used, and provided that no fee is charged. While the M-R SPR makes every effort to ensure that the information presented is sufficiently accurate for the intended uses of the map, there is an inherent margin of error in all mapping products, and accuracy of the mapping cannot be guaranteed for all possible uses. All end-users must therefore determine for themselves if the information is suitable for their purposes. Made possible by the Government of Ontario.

Date Printed: 04/03/2008  
Printed by: kkamichalis

FILE LOCATION: \\MDS\SWP03\WaterBudget\SPC\_Draft\_Feb2008\Fig3.2-2\_SnowSites.v1.1.mxd

Source: Snow depth and water equivalent is collected by the Conservation Authorities and Parks Canada at 25 snow sites in the Region. The 14 snow sites in the Mississippi Valley are operated by Mississippi Valley Conservation. Among 11 sites in the Rideau Valley, the five sites downstream of Smiths Falls are operated by the Rideau Valley Conservation Authority and the six sites upstream of Smiths Falls are operated by Parks Canada.

Godfrey 1989-present