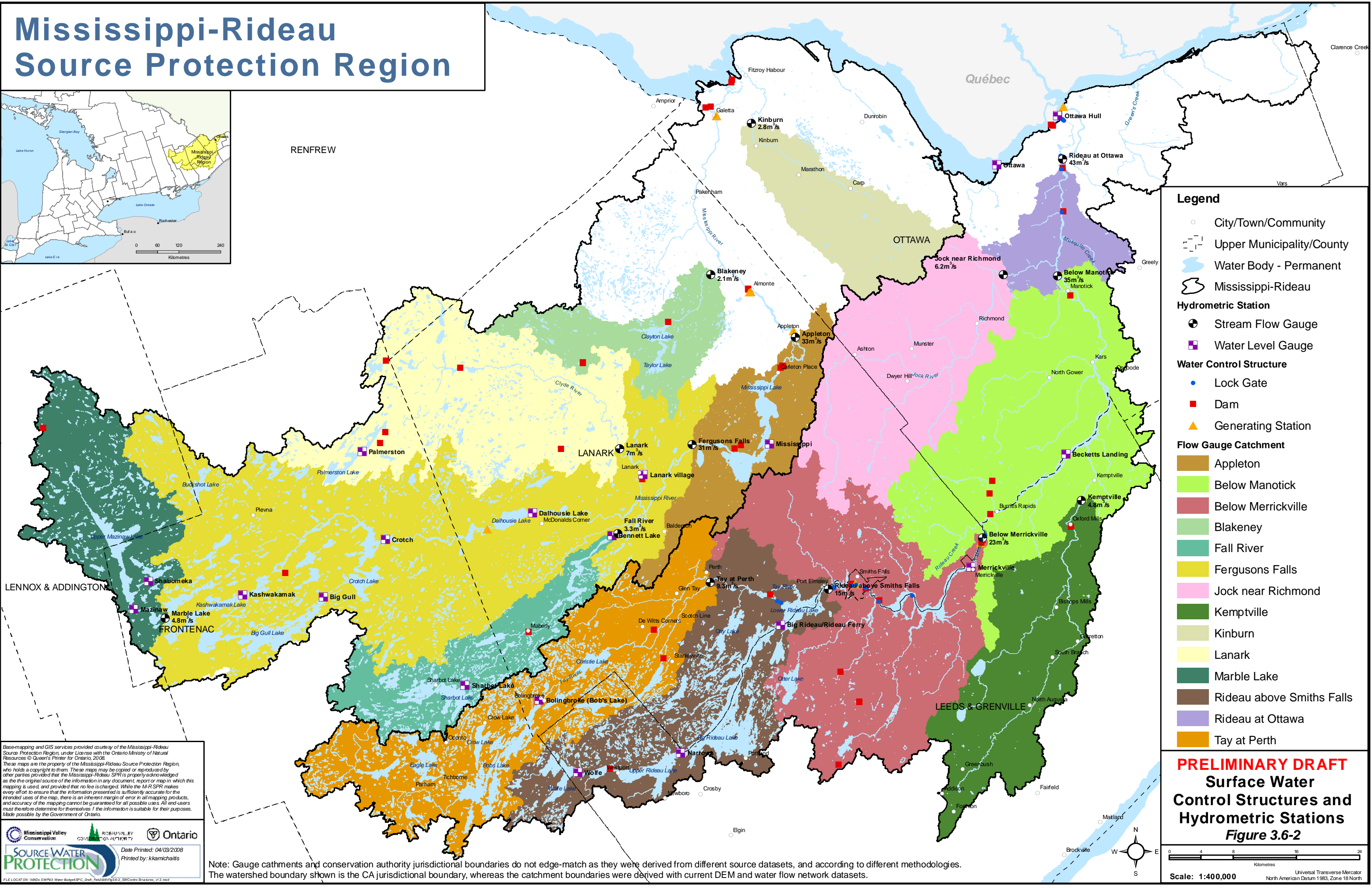
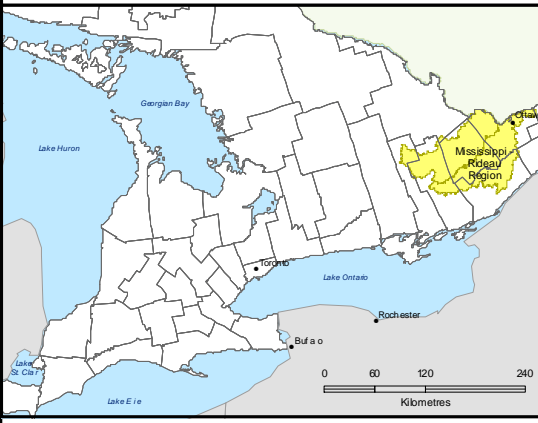


Mississippi-Rideau Source Protection Region



Legend

- City/Town/Community
- ⊞ Upper Municipality/County
- Water Body - Permanent
- Mississippi-Rideau

Hydrometric Station

- ⊕ Stream Flow Gauge
- ⊞ Water Level Gauge

Water Control Structure

- Lock Gate
- Dam
- ▲ Generating Station

Flow Gauge Catchment

- Appleton
- Below Manotick
- Below Merrickville
- Blakeney
- Fall River
- Fergusons Falls
- Jock near Richmond
- Kemptville
- Kinburn
- Lanark
- Marble Lake
- Rideau above Smiths Falls
- Rideau at Ottawa
- Tay at Perth

Base-mapping and GIS services provided courtesy of the Mississippi-Rideau Source Protection Region, under License with the Ontario Ministry of Natural Resources © Queen's Printer for Ontario, 2008.

These maps are the property of the Mississippi-Rideau Source Protection Region, who holds a copyright to them. These maps may be copied or reproduced by other parties provided that the Mississippi-Rideau SPR is properly acknowledged as the original source of the information in any document, report or map in which this mapping is used, and provided that no fee is charged. While the M-R SPR makes every effort to ensure that the information presented is sufficiently accurate for the intended uses of the map, there is an inherent margin of error in all mapping products, and accuracy of the mapping cannot be guaranteed for all possible uses. All end users must therefore determine for themselves if the information is suitable for their purposes. Made possible by the Government of Ontario.

Date Printed: 04/03/2008
Printed by: kkamichalis

Note: Gauge catchments and conservation authority jurisdictional boundaries do not edge-match as they were derived from different source datasets, and according to different methodologies. The watershed boundary shown is the CA jurisdictional boundary, whereas the catchment boundaries were derived with current DEM and water flow network datasets.

PRELIMINARY DRAFT

Surface Water Control Structures and Hydrometric Stations

Figure 3.6-2

Scale: 1:400,000

Universal Transverse Mercator
North American Datum 1983, Zone 18 North