

2.0 Section 36 Workplan Development

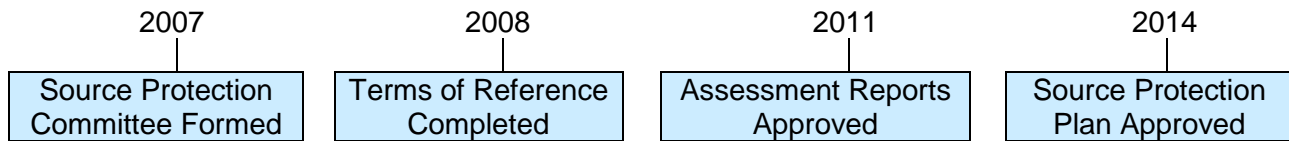
Date: August 9, 2018
To: Mississippi-Rideau Source Protection Committee
From: Brian Stratton, Project Manager
Mississippi-Rideau Source Protection Region

Recommendation:

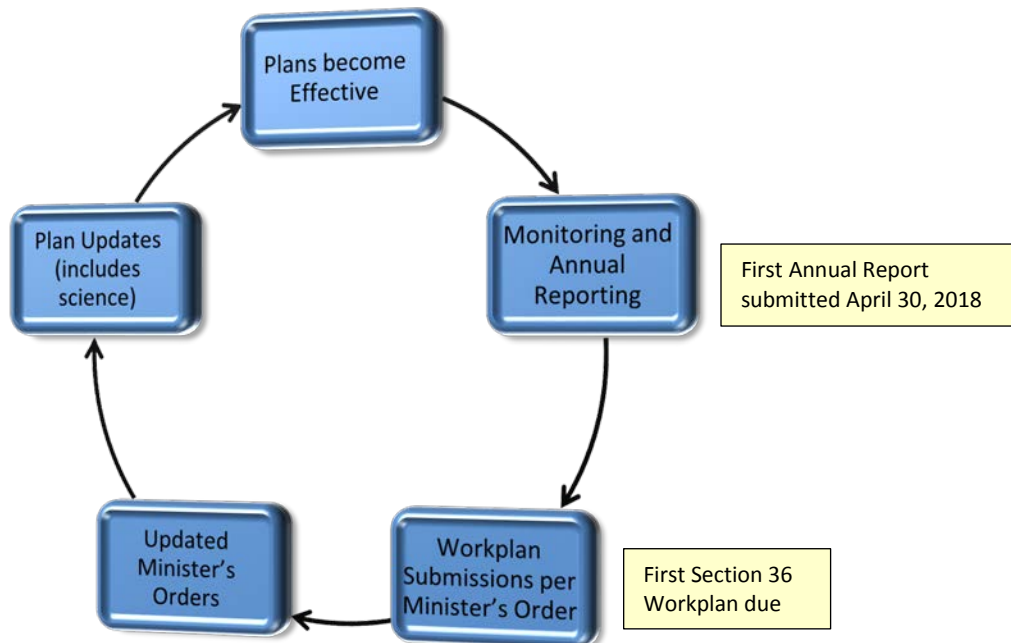
That the Mississippi-Rideau Source Protection Committee approve the Section 36 Workplan analysis and direct staff to prepare a draft formal Section 36 Workplan for review by Ministry of the Environment, Conservation and Parks staff and municipal partners.

Background

The source protection program, under the Ontario *Clean Water Act*, accomplished many things in the Mississippi-Rideau region since 2007. The major milestones were the formation of the Source Protection Committee, preparation of the Terms of Reference, completion of the technical Assessment Reports and the development of the Source Protection Plan.



On January 1, 2015, the Mississippi-Rideau Source Protection Plan came into effect. Now the Source Protection Plan is being implemented, monitored and periodically updated.



On April 30, 2018, the first Annual Report was submitted to the Ministry of the Environment, Conservation and Parks. The next step, is the preparation of a Section 36 Workplan. The following specific details about the Section 36 Workplan were included in the Minister's approval letter for the Mississippi-Rideau Source Protection Plan, dated August 27, 2014.

Under section 36 of the Clean Water Act, when a source protection plan is approved, an order must also be given that governs the review of the plan. Pursuant to clauses 36 (1) (c) and (d), and as an initial step in the development of detailed requirements that will govern the review of the Mississippi-Rideau Source Protection Plan, the lead source protection authority (the Rideau Valley Conservation Authority) for the Mississippi-Rideau Source Protection Region shall prepare and submit a workplan to the ministry. The workplan shall propose the detailed steps for the review of the plan, including which portions of the plan are to be reviewed, the timeframes for each step of the review and the consultation that would be undertaken as part of the review. A rationale shall accompany the workplan that explains its contents and summarizes how the workplan was developed. The workplan shall be developed in consultation with the Mississippi-Rideau Source Protection Committee, participating municipalities of the Mississippi-Rideau Source Protection Region, the Ministry of Environment and Climate Change and the Mississippi Valley Source Protection Authority .

The development of the workplan must take into consideration any experience that has been gained from implementing the source protection plan and consider the information from the first annual progress report on plan implementation. The requirements for the annual progress report are set out in section 46 of the Clean Water Act (the first annual report for the Mississippi-Rideau Source Protection Region will be submitted to the ministry in May 2018). Accordingly, the workplan shall be submitted to the ministry no later than November 30, 2018 and the rationale accompanying the workplan shall explain how the results from the annual progress report were taken into consideration in the development of the workplan. Once the workplan is submitted and reviewed by the ministry, and following any further consultation with the lead source protection authority and other affected stakeholders that the ministry considers advisable, a further order can be issued under section 36 that specifies more detailed requirements governing the content and timeframes that will govern the review of the Mississippi-Rideau Source Protection Plan. This subsequent order will provide how the requirements set out in section 36 of the Clean Water Act will apply to the review of the Mississippi-Rideau Source Protection Plan.

Approach to Prepare Workplan

Based on the Ministry of the Environment, Conservation and Parks Section 36 guidance document, the three main components of the process that lead to workplan submission are:

- 1) Preliminary analysis including review factors
- 2) Consultation for stakeholder engagement
- 3) Workplan

1) Preliminary Analysis

The preliminary analysis was completed with stakeholders using the eight factors below. A series of meetings took place in June 2018 with Mississippi-Rideau source protection staff and several stakeholders with these factors as the framework for determining which updates are required for the Mississippi-Rideau Assessment Report and Source Protection Plan. The key findings from these meetings will be presented at the August 9, 2018 Source Protection Committee meeting.

- 1) Results of environmental monitoring programs
- 2) Growth and infrastructure changes
- 3) Council resolutions
- 4) Policy effectiveness
- 5) Implementation challenges
- 6) Technical rule changes
- 7) Impacts of prohibition policies on the agricultural community
- 8) Other local considerations.

2) Consultation

To date, there has been significant consultation on the workplan, in a variety of forms. This includes in-person meetings, emails, and phone calls with municipal staff, risk management officials (RMOs), provincial staff, the Source Protection Committee, Source Protection Authority (SPA) staff and general managers. Consultation was held to gather information for the preliminary analysis, to discuss the proposed workplan and receive comments and feedback. The following table outlines the consultation conducted to date as well as consultation activities planned following the August 9, 2018 Source Protection Committee meeting.

Date	Consultation Details
November 2017 and April 2018	Reports and presentations to the Source Protection Committee on the Section 36 workplan process and initial discussion of potential topics at committee meetings
May - June 2018	<p>Consultation with the Ministry of the Environment, Conservation and Parks on workplan content by phone and email</p> <p>Preliminary consultation meetings with municipalities in the working group, including one-on-one meetings with municipalities with drinking water systems and individual communications where needed</p> <p>Consultation with Conservation Authority monitoring staff, Mississippi Valley Conservation Authority General Manager and Risk Management Officials at the Conservation Authorities</p>
July 2018	<p>Management committee meeting to discuss the items identified in the preliminary analysis including both SPA General Managers</p> <p>Municipal working group teleconference to discuss the preliminary analysis and potential workplan items (July 18, 2018)</p>
August 9, 2018	The Source Protection Committee to review a listing of identified Assessment Report and Source Protection Plan issues, challenges and limitations and discuss proposed workplan inclusions

Date	Consultation Details
	The Source Protection Committee to comment and discuss draft workplan ideas for Section 36 updates including recommended areas of the Source Protection Plan to be updated prior to wider circulation
Week after Source Protection Committee meeting	Draft workplan for Section 36 updates to be circulated to stakeholders and the Ministry of the Environment, Conservation and Parks, for a comment period ending September 26, 2018
Oct. 4, 2018	A Source Protection Committee meeting to be held to discuss the draft workplan and receive comments and endorsement
Oct. 17 & 25 2018	Source Protection Authority meetings to be held to approve and endorse the proposed workplan
Oct. 26, 2018 or later	The proposed Section 36 workplan to be submitted electronically to the Ministry of the Environment, Conservation and Parks

3) Workplan

The Workplan will be prepared as a report using the following format:

Executive Summary
1) Introduction
2) Workplan Development
3) Proposed Workplan Updates/Items
4) Conclusion
5) References
Appendices

The work workplan updates/items are summarized below and will be discussed at the SPC meeting on August 9, 2018. Based on the feedback received, the following three types of workplan Updates/Items are proposed:

- 1) Updates – These items will result in an update to the Assessment Report or Source Protection Plan
- 2) Potential Updates – These items may result in an update to the Assessment Report or Source Protection Plan depending on the results of some initial investigations or municipal decisions
- 3) Activities that Support Implementation – This includes a proposed guidance document to assist with implementation of the Source Protection Plan

Work Plan Update	Start	End
Update: Source Protection Plan Policy Review for Part IV Policies	Apr-19	Mar-20
Update: Source Protection Plan Policy Creation for new liquid hydrocarbon oil pipeline threat and Significant Groundwater Recharge Area Vulnerability Scoring Change	Apr-19	Mar-20
Update: Source Protection Plan Policy Update for fuel storage in IPZs and WHPA-Es with scoring 9 or higher	Apr-19	Mar-20
Update: Lemieux Island Water Purification Plant Intake Improvement Project	already underway	Mar-20
Update: Climate Change Assessment	Apr-19	Mar-21
Update: Clerical Changes	Apr-20	Mar-21
Update: New Municipal Wells in Kemptville	on-going	

Work Plan Potential Update	Start	End
Potential Update: Water Takings Assessment for Municipal Wells in Almonte	Apr-19	Mar-20
Potential Update: Water Quality Assessment for Municipal Wells in Westport	on-going	
Potential Update: Consideration of Phase 2 Technical Rule Changes	unknown	
Potential Update: Well Relocation Project in Munster	currently underway	Summer of 2020
Potential Update: New Municipal Well in Richmond	currently being initiated	2023

Work Plan Item	Start	End
Highly Vulnerable Aquifer (HVA) Guidance Document	Apr-20	Mar-21

Next Steps

Using the feedback from the August 9, 2018 Source Protection Committee meeting, Mississippi-Rideau source water staff will prepare a draft Mississippi-Rideau Section 36 Workplan Report. This draft workplan report will be circulated to stakeholders and the Ministry of the Environment, Conservation and Parks for a comment period ending September 26, 2018. Taking into consideration any comments received, the draft workplan will be presented to the Source Protection Committee on October 4, 2018 for further discussion and endorsement. Then, it will be presented to the Mississippi Valley and Rideau Valley Source Protection Authorities later in October for endorsement and approval to submit to the MECP.

3.0 Update - Source Protection Plan Amendment – New Municipal Wells for Western Development Lands in Richmond

Date: August 9, 2018
To: Mississippi-Rideau Source Protection Committee
From: Brian Stratton, Co-Project Manager

Recommendation:

That the Mississippi-Rideau Source Protection Committee receive this update about the upcoming amendment to the Source Protection Plan to add two new municipal wells and associated Wellhead Protection Area for Western Development Lands in Richmond,

and furthermore,

That the Mississippi-Rideau Source Protection Committee direct staff to proceed with public consultation when the draft amendment is completed.

New Wells

A new municipal well system, comprised of two wells, to serve the Western Development Lands in the community of Richmond is in the final stages of approval and will be owned and operated by the City of Ottawa. These wells now have a mapped Wellhead Protection Area (WHPA) which illustrates where and to what degree the groundwater is vulnerable to contamination. Groundwater extraction at the new wells will affect two existing WHPA's, the King's Park WHPA in Richmond and the Munster WHPA (see attached map of the proposed WHPA). The Mississippi Valley and Rideau Valley Source Protection Authorities are seeking an amendment to the Mississippi-Rideau Source Protection Plan before the new well system is brought online.

Purpose of Amendment

An amendment to the Mississippi-Rideau Source Protection Plan, developed under Ontario's *Clean Water Act*, is needed so that the policies to protect drinking water sources set out in the Plan can apply within these new WHPAs. This will afford the same level of protection for the new drinking water source as currently exists for all other municipal drinking water sources in the Mississippi-Rideau Source Protection Region.

The amendment will include updated mapping of affected vulnerable areas in the Source Protection Plan and a new chapter for the Rideau Valley Source Protection Area Assessment Report with mapping and technical information on the Munster, Richmond King's Park and new Richmond well system serving the Western Development Lands.

Regulatory Process for Amendment

Section 34 of the *Clean Water Act* and Sections 48-50 of Ontario Regulation 287/07 set out the regulatory process for the amendment. Once the amendment has been prepared, it will be submitted to the Ministry of the Environment, Conservation and Parks for approval. The process is outlined below.

	Regulatory Requirement	Timeline
1	Rideau Valley Source Protection Authority (SPA) and Source Protection Committee (SPC) agree amendment is advisable	SPA meeting Oct. 27, 2016 SPC meeting Feb. 2, 2017
2	Early engagement with stakeholders	See below
3	Pre-consultation* – with bodies responsible for implementing policies	Pre-consultation letters were sent out on July 16, 2018
4	Municipal endorsement – council resolutions (a formality since municipalities are in support and are overseeing technical work)	Notice issued to City of Ottawa on June 1, 2018 (see attached). Report presented to ARAC on July 5, 2018 (and resolution was carried) and City Council on July 11, 2018 (and resolution was carried).
5	Public consultation* – website posting, newspaper ads, letters to stakeholders	35 days (minimum) – Anticipated website posting date is August 24, 2018,
6	Submission to the Ministry of the Environment, Conservation and Parks – must adhere to required content and format	Target date is late October 2018 but will share draft amendment with MECP earlier
7	Ministry of the Environment, Conservation and Parks approval of amendment	Unknown

**At these stages, the SPA and SPC will have an opportunity to review comments received, if any, and approve any changes needed to address comments and resolve issues.*

Note that new regulatory changes to the *Safe Drinking Water Act* came into effect on July 1, 2018 that sets out timing requirements for Source Protection work in relation to permitting and licensing of Municipal Drinking Water Systems. It is understood that a condition will be included within the Municipal Drinking Water License that the system will not supply water to the public until the amendments to Source Protection Plan are approved by the Ministry of the Environment, Conservation and Parks.

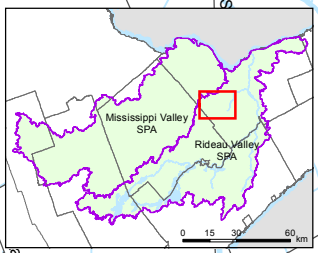
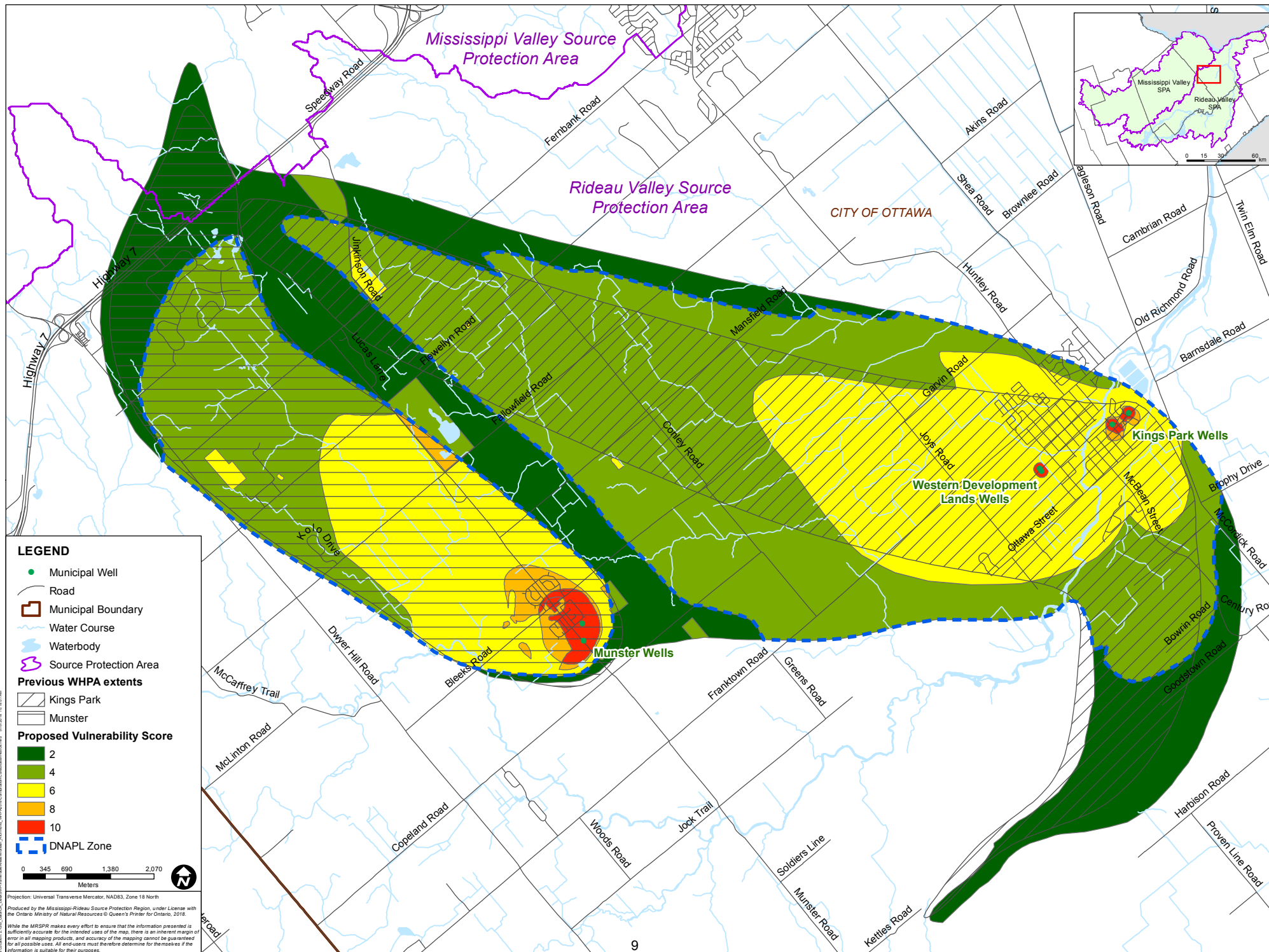
Amendment Status

The technical work for the new wells is now at the final stages, with the recent completion of the Managed Lands and Livestock Density report, threats assessment report, and groundwater vulnerability report. A consolidated groundwater vulnerability report containing current and historical information about the new Western Development Lands wells, King's Park and Munster is to be completed soon.

Mississippi-Rideau Source Protection Region staff are in the final stages of preparing the amendment which will consist of an updated Rideau Valley Source Protection Area (RVSPA) Assessment Report (AR) section as well as a revised Source Protection Plan (SPP). The updated Rideau Valley Source Protection Authority Assessment Report section is being prepared using the same approach as the original AR. The new section will replace Section 5.7 (Munster Water Supply) and Section 5.8 (Richmond King's Park Water Supply) and will include information about the new Western Development Lands, Munster and Richmond King's Park water supply systems. The new section will include approximately 40 figures. The revisions to the Source Protection Plan are limited to updating the selected figures/maps and the discussion about the Wellhead Protection Areas (now eight systems instead of seven). There are no Source Protection Plan policy revisions or changes to the Explanatory Document.

As indicated above, the target to post the amendment for a 35-day consultation period is August 24, 2018 or sooner. Once the consultation period is over, the amendment will be presented to the Source Protection Committee at the next meeting to be held on October 4, 2018. It will be presented to the Mississippi Valley and Rideau Valley Source Protection Authorities for approval to submit to the Ministry of Environment, Conservation and Parks on October 17, 2018 and 27, 2018 and submitted to the Ministry of Environment, Conservation and Parks shortly thereafter.

Map of the Proposed Wellhead Protection Area



LEGEND

- Municipal Well
- Road
- Municipal Boundary
- Water Course
- Waterbody
- Source Protection Area

Previous WHPA extents

- Kings Park
- Munster

Proposed Vulnerability Score

- 2
- 4
- 6
- 8
- 10

DNAPL Zone

0 345 690 1,380 2,070
Meters

Projection: Universal Transverse Mercator, NAD83, Zone 18 North
Produced by the Mississippi/Rideau Source Protection Region, under License with the Ontario Ministry of Natural Resources © Queen's Printer for Ontario, 2018.
While the MRSR makes every effort to ensure that the information presented is sufficiently accurate for the intended uses of the map, there is an inherent margin of error in all mapping products, and accuracy of the mapping cannot be guaranteed for all possible uses. All end-users must therefore determine for themselves if the information is suitable for their purposes.

DRINKING WATER SOURCE PROTECTION

ACT FOR CLEAN WATER

 Mississippi Valley
Conservation Authority

 RIDEAU VALLEY
CONSERVATION AUTHORITY

City of Ottawa
Attention: Rick O'Connor, City Clerk & Solicitor
110 Laurier Ave West (1st Floor)
Ottawa, ON K1P 1J1

June 1, 2018

Re: SOURCE PROTECTION PLAN AMENDMENT TO ADD NEW MUNICIPAL WELLS
Notice Seeking Municipal Council Resolution under S. 34(2) of the *Clean Water Act*
And
Pre-Consultation Notice under Ontario Regulation 287/07

Dear Council and Staff,

The Mississippi and Rideau Source Protection Authorities (SPAs) are proposing an amendment to the Mississippi-Rideau Source Protection Plan under Section 34 of the *Clean Water Act*.

New Wells

As you may know, there is a new municipal well system that will serve the Western Development Lands in the community of Richmond. This new well system now has a mapped Wellhead Protection Area (WHPA) which illustrates where and to what degree the groundwater is vulnerable to contamination. The new well also affects two existing Wellhead Protection Areas, the King's Park Wellhead Protection Area in Richmond and the Munster Wellhead Protection Area. An amendment to the Mississippi-Rideau Source Protection Plan is required before the new well system is brought online.

Purpose of Amendment

An amendment to the Mississippi-Rideau Source Protection Plan, developed under Ontario's *Clean Water Act*, is needed so that the policies to protect drinking water sources set out in the Plan can apply within this new WHPA. This will afford the same level of protection for this new drinking water source as currently exists for other municipal drinking water sources in the Mississippi-Rideau Source Protection Region.

The amendment will include updated mapping of the affected vulnerable areas in the Source Protection Plan and a new chapter for the Rideau Valley Source Protection Area Assessment Report with mapping and technical information on the Munster, Richmond King's Park and new Richmond well system serving the Western Development Lands.

Purpose of this Notice

This notice is to:

1. Seek a municipal council resolution to endorse the proposed amendment (required under Section 34 of the *Clean Water Act*)
2. Provide a pre-consultation comment opportunity for the municipality, as a body who is responsible for implementing policies in the proposed WHPA, prior to broader public

consultation (pursuant to Ontario Regulation 287/07, this opportunity must be provided to all bodies responsible for implementing policies in the Source Protection Plan)

Information Enclosed with this Notice

- Map of the proposed WHPAs
- A list of policies your municipality is responsible for implementing (this is the same as the policies that the municipality is already implementing in other WHPAs and that can be found in the [Mississippi-Rideau Source Protection Plan](#))
- A list of policies that will apply within the WHPA (this is the same as the policies that already apply to all other WHPAs in the City of Ottawa)
- A summary of anticipated significant drinking water threats

Information to Follow

Once the proposed amendment draft is finalized, following the receipt of the remaining technical work, it will be circulated to the City of Ottawa for additional comment as required under S. 34 of the *Clean Water Act*.

We request your comments, if any, by July 13, 2018
Please copy us on the municipal council resolution when it has been passed

Thank you for your input, we look forward to engaging with you on this matter.

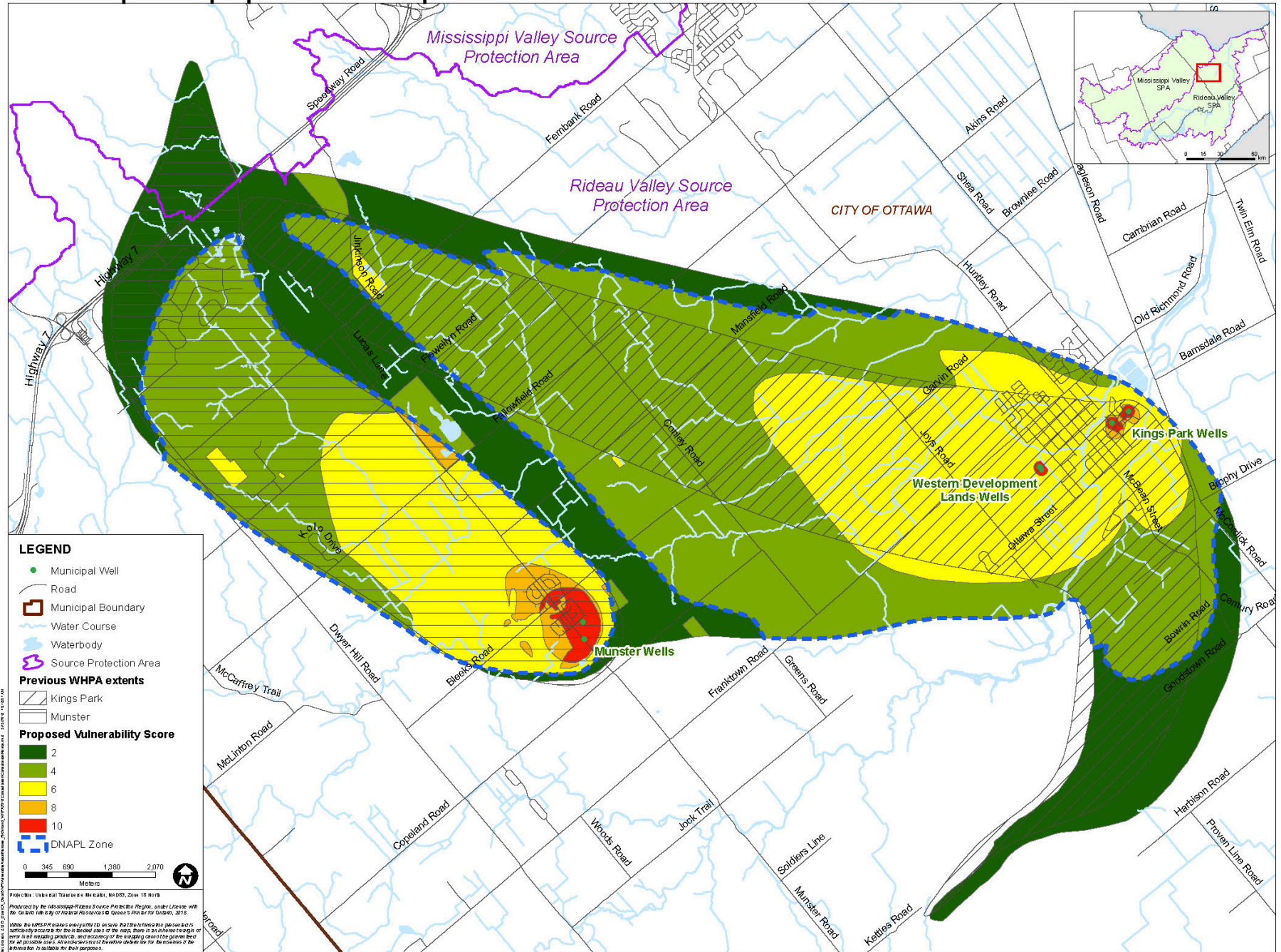
Sincerely,



Brian Stratton
Project Manager
Mississippi-Rideau Source Protection Region
brian.stratton@mrsourcewater.ca
(613) 692-3571 x1141

CC: Tessa Di Iorio, Risk Management Official/Inspector, City of Ottawa
Bilal Kidwai, Source Water Protection Liaison Officer, Ministry of the Environment and Climate Change

Appendix 1: Map of the proposed wellhead protection areas



Appendix 2: Policy Information

Policy Codes Summarized by Compliance/Target Date for the City of Ottawa

(based on appendix C2 from the approved Mississippi-Rideau Source Protection Plan)

Implementing Body	Compliance Date for Legally Binding Policies/Target Date for Non-Legally Binding Policies						Monitoring Policies
	Immediate ¹	6 months	1 year	2 years	3 years ²	5 years	
MUNICIPAL							
Ottawa, City of	WASTE-4-LB-S57 SEW-9-LB-PI/PA-MC SEW-11-LB-S58	SEW-3-LB	SEW-4-LB SEW-6-LB SALT-5-NLB SALT-6-NLB	EDU-3-NLB EDU-4-NLB	WASTE-2-LB-S58 SEW-11-LB-S58 SEW-14-LB-S58 SALT-1-LB-S58 DNAPL-1-LB-S58 FUEL-1-LB-S58 FUEL-6-LB-S58 FERT-2-LB-S58 PEST-4-LB-S58 LIVE-2-LB-S58 ASM-2-LB-S58 NASM-3-LB-S58	ADMIN-3-LB	MON-1-LB MON-2-LB MON-3-NLB
<i>IPZ scored 8.1 & 9</i>	SEW-12-LB-S57		CORR-1-NLB				
<i>WHPA-A scored 10</i>	SEW-15-LB-PI/PA-MC		PATH-1-NLB				
<i>WHPA-B scored 10</i>	SEW-16-LB-S57		EDU-1-LB				
<i>WHPA-B scored 8</i>	SALT-2-LB-S57		EDU-5-NLB				
<i>WHPA-B & WHPA-C scored less than or = 6</i>	DNAPL-2-LB-S57 FUEL-1-LB-S58 FUEL-5-LB-S57 FUEL-6-LB-S58 FERT-2-LB-S58 FERT-3-LB-S57 PEST-5-LB-S57 LIVE-2-LB-S58 ASM-2-LB-S58 NASM-3-LB-S58 DEICE-1-LB-S57 ADMIN-1-LB ADMIN-2-LB ADMIN-4-LB ADMIN-5-LB						

¹Policies requiring Risk Management Plans immediately apply to new activities (i.e. a new activity may not proceed without an approved Risk Management Plan)

²Policies requiring Risk Management Plans to be established within 3 years of the Source Protection Plan taking effect apply to existing activities

Policy Codes Summarized by Vulnerable Area and Policy Intent (all policies)
 (based on appendix C1 from the approved Mississippi-Rideau Source Protection Plan)

Vulnerable Area and Vulnerability Score	Policy Code		
	Prohibit	Manage	Encourage
Wellhead Protection Area (WHPA)			
WHPA A scored 10	WASTE-3-LB-PI-MC	WASTE-1-LB-PI-MC	SALT-5-NLB
	WASTE-4-LB-S57	WASTE-2-LB-S58	SALT-6-NLB
	SEW-9-LB-PI/PA-MC	SEW-1-LB	FUEL-3-NLB
	SEW-12-LB-S57	SEW-2-LB	PEST-1-NLB
	SEW-15-LB-PI/PA-MC	SEW-3-LB	PEST-2-NLB
	SEW-16-LB-S57	SEW-4-LB	CORR-1-NLB
	SALT-2-LB-S57	SEW-5-LB-PI-MC	CORR-2-NLB
	DNAPL-2-LB-S57	SEW-6-LB	PATH-1-NLB
	FUEL-5-LB-S57	SEW-7-LB-PI-MC	PATH-2-NLB
	FERT-3-LB-S57	SEW-8-LB-PI-MC	PATH-3-NLB
	PEST-5-LB-S57	SEW-10-LB-PI-MC	EDU-2-NLB
	DEICE-1-LB-S57	SEW-11-LB-S58	EDU-3-NLB
		SEW-13-LB-PI-MC	EDU-5-NLB
		SEW-14-LB-S58	
		SALT-1-LB-S58	
		SALT-3-LB ¹	
		SALT-4-LB ¹	
		DNAPL-1-LB-S58	
		FUEL-1-LB-S58	
		FUEL-2-LB-PI-MC	
		FUEL-4-NLB	
		FUEL-6-LB-S58	
		FERT-1-LB-PI-MC	
		FERT-2-LB-S58 ³	
		PEST-3-LB-PI-MC	
		PEST-4-LB-S58	
		LIVE-1-LB-PI-MC	
		LIVE-2-LB-S58	
		ASM-1-LB-PI-MC	
		ASM-2-LB-S58	
		NASM-1-LB-PI-MC	
	NASM-2-LB-PI-MC		
	NASM-3-LB-S58		
	EDU-1-LB		

WHPA B scored 10	WASTE-3-LB-PI-MC WASTE-4-LB-S57 SEW-15-LB-PI/PA-MC SEW-16-LB-S57 SALT-2-LB-S57 DNAPL-2-LB-S57 FUEL-5-LB-S57 FERT-3-LB-S57 PEST-5-LB-S57 DEICE-1-LB-S57	WASTE-1-LB-PI-MC WASTE-2-LB-S58 SEW-1-LB SEW-2-LB SEW-3-LB SEW-4-LB SEW-5-LB-PI-MC SEW-6-LB SEW-7-LB-PI-MC SEW-8-LB-PI-MC SEW-10-LB-PI-MC SEW-11-LB-S58 SEW-13-LB-PI-MC SEW-14-LB-S58 SALT-1-LB-S58 SALT-3-LB ¹ SALT-4-LB ¹ DNAPL-1-LB-S58 FUEL-1-LB-S58 FUEL-2-LB-PI-MC FUEL-4-NLB FUEL-6-LB-S58 FERT-1-LB-PI-MC FERT-2-LB-S58 ³ PEST-3-LB-PI-MC PEST-4-LB-S58 LIVE-1-LB-PI-MC LIVE-2-LB-S58 ASM-1-LB-PI-MC ASM-2-LB-S58 NASM-1-LB-PI-MC NASM-2-LB-PI-MC NASM-3-LB-S58 EDU-1-LB	SALT-5-NLB SALT-6-NLB FUEL-3-NLB PEST-1-NLB PEST-2-NLB CORR-1-NLB CORR-2-NLB PATH-1-NLB PATH-2-NLB PATH-3-NLB EDU-2-NLB EDU-3-NLB EDU-5-NLB
WHPA B scored 8	WASTE-3-LB-PI-MC WASTE-4-LB-S57 SEW-15-LB-PI/PA-MC SEW-16-LB-S57 DNAPL-2-LB-S57	WASTE-1-LB-PI-MC WASTE-2-LB-S58 SEW-13-LB-PI-MC SEW-14-LB-S58 DNAPL-1-LB-S58	CORR-1-NLB CORR-2-NLB PATH-1-NLB PATH-2-NLB PATH-3-NLB EDU-3-NLB EDU-5-NLB

WHPA C scored 8	WASTE-3-LB-PI-MC WASTE-4-LB-S57 SEW-15-LB-PI/PA-MC SEW-16-LB-S57 DNAPL-2-LB-S57	WASTE-1-LB-PI-MC WASTE-2-LB-S58 SEW-13-LB-PI-MC SEW-14-LB-S58 DNAPL-1-LB-S58	CORR-1-NLB CORR-2-NLB PATH-1-NLB PATH-2-NLB PATH-3-NLB EDU-3-NLB EDU-5-NLB
WHPA C any score	DNAPL-2-LB-S57	DNAPL-1-LB-S58	No policies
Highly Vulnerable Aquifer (HVA)			
HVA	No policies apply	WASTE-5-LB-PI-HR	WASTE-6-NLB SALT-5-NLB SALT-6-NLB EDU-6-NLB

Administrative and monitoring polices are not included

¹Policy applies in Carleton Place, Perth, Smiths Falls, and Kemptville

²Policy does not apply in an IPZ scored 8

³Commercial fertilizer **application** is only subject to this policy if it occurs in the Munster WHPA scored 10

Appendix 3: Preliminary Assessment of Anticipated Significant Threats

Technical works to confirm significant threat information is on-going, however, the following information is known at this time:

1. Western Development Lands Wellhead Protection Area:
 - Sanitary Sewers and Related Pipes. This is a future significant threat that will be addressed by Province in the Environmental Compliance Approval (ECA) process.
 - Handling or Storage of Fuel Associated with the Drinking Water System. This is a potential future significant threat that will be addressed by Province in municipal drinking water license approval.
 - Dense Non-Aqueous Phase Liquids (DNAPLs) and Organic Solvents. Small volumes of DNAPLs may be present at existing automotive service facilities. As such, Risk Management Plans may need to be developed with these facilities which are currently being enumerated as part of the on-going technical work. The Province is currently re-evaluating the circumstances for DNAPLs and Organic Solvents which may result in changes to how DNAPL and Organic Solvent significant threats are defined in the future.

2. Munster & Richmond King's Park Wellhead Protection Areas
 - Very little change to existing significant threats is anticipated. These currently include: 1) storage of residential fuel (heating) oil, 2) sanitary sewers and related pipes, and 3) DNAPLs. More specifically, there are no new significant threats for residential fuel (heating) oil and slightly less area where sanitary sewers and related pipes could be significant threats. DNAPL significant threats are currently being enumerated but the number of properties is not expected to be high.