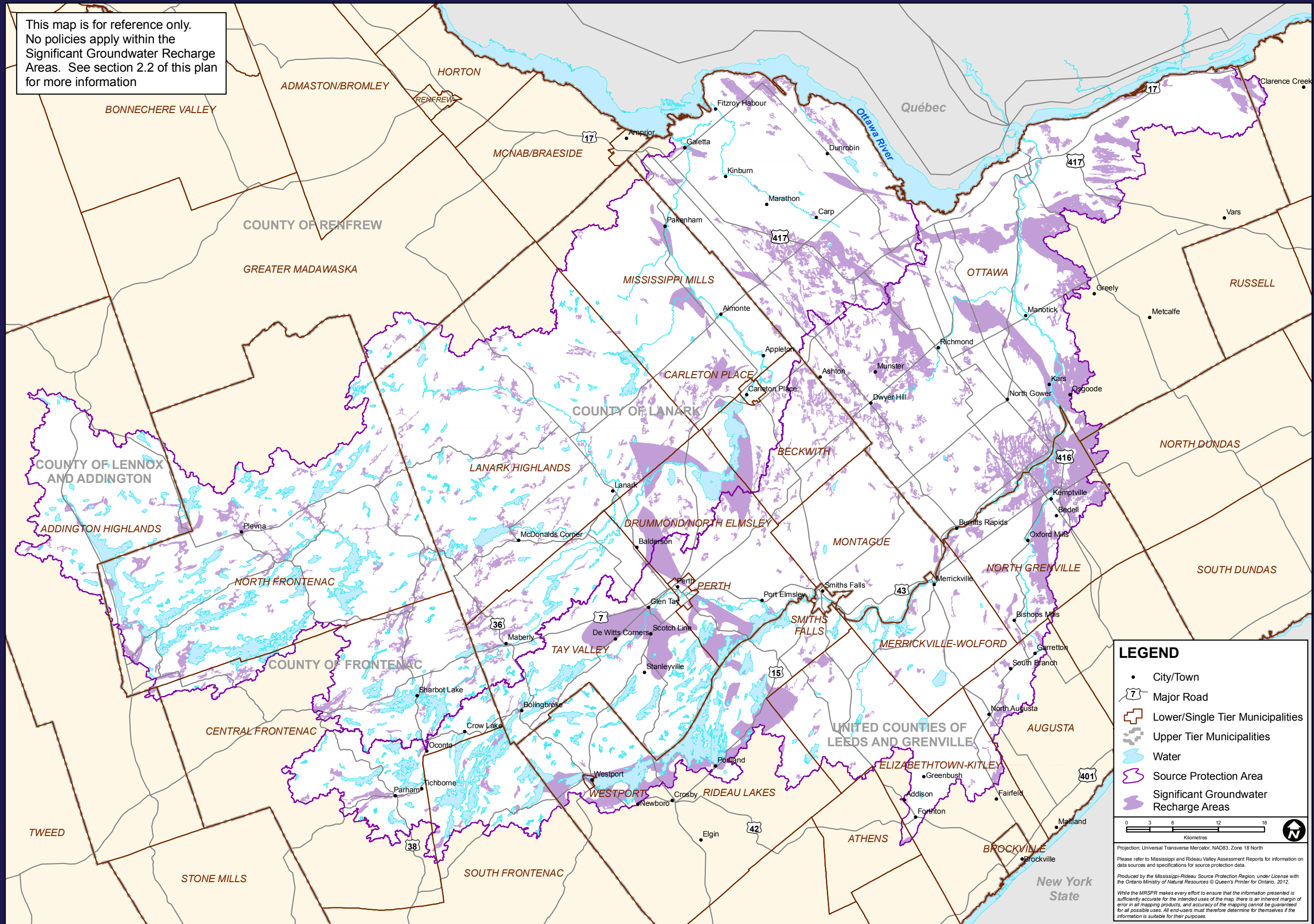


This map is for reference only. No policies apply within the Significant Groundwater Recharge Areas. See section 2.2 of this plan for more information



**LEGEND**

- City/Town
- 7 Major Road
- Lower/Single Tier Municipalities
- Upper Tier Municipalities
- Water
- Source Protection Area
- Significant Groundwater Recharge Areas

0 3 6 12 18  
Kilometres

Projection: Universal Transverse Mercator, NAD83, Zone 18 North  
Please refer to Mississippi and Rideau Valley Assessment Reports for information on data sources and specifications for source protection data.  
Produced by the Mississippi-Rideau Source Protection Region, under License with the Ontario Ministry of Natural Resources © Queen's Printer for Ontario, 2012.  
While the MRSPR makes every effort to ensure that the information presented is sufficiently accurate for the intended uses of the map, there is an inherent margin of error in all mapping products, and accuracy of the mapping cannot be guaranteed for all possible uses. All end-users must therefore determine for themselves if the information is suitable for their purposes.