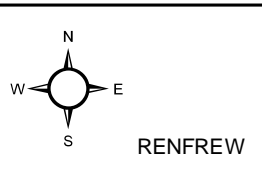
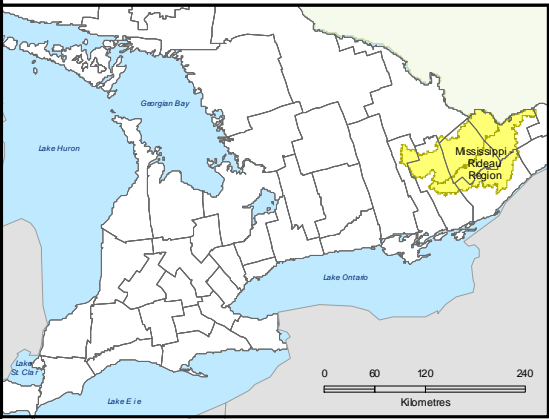
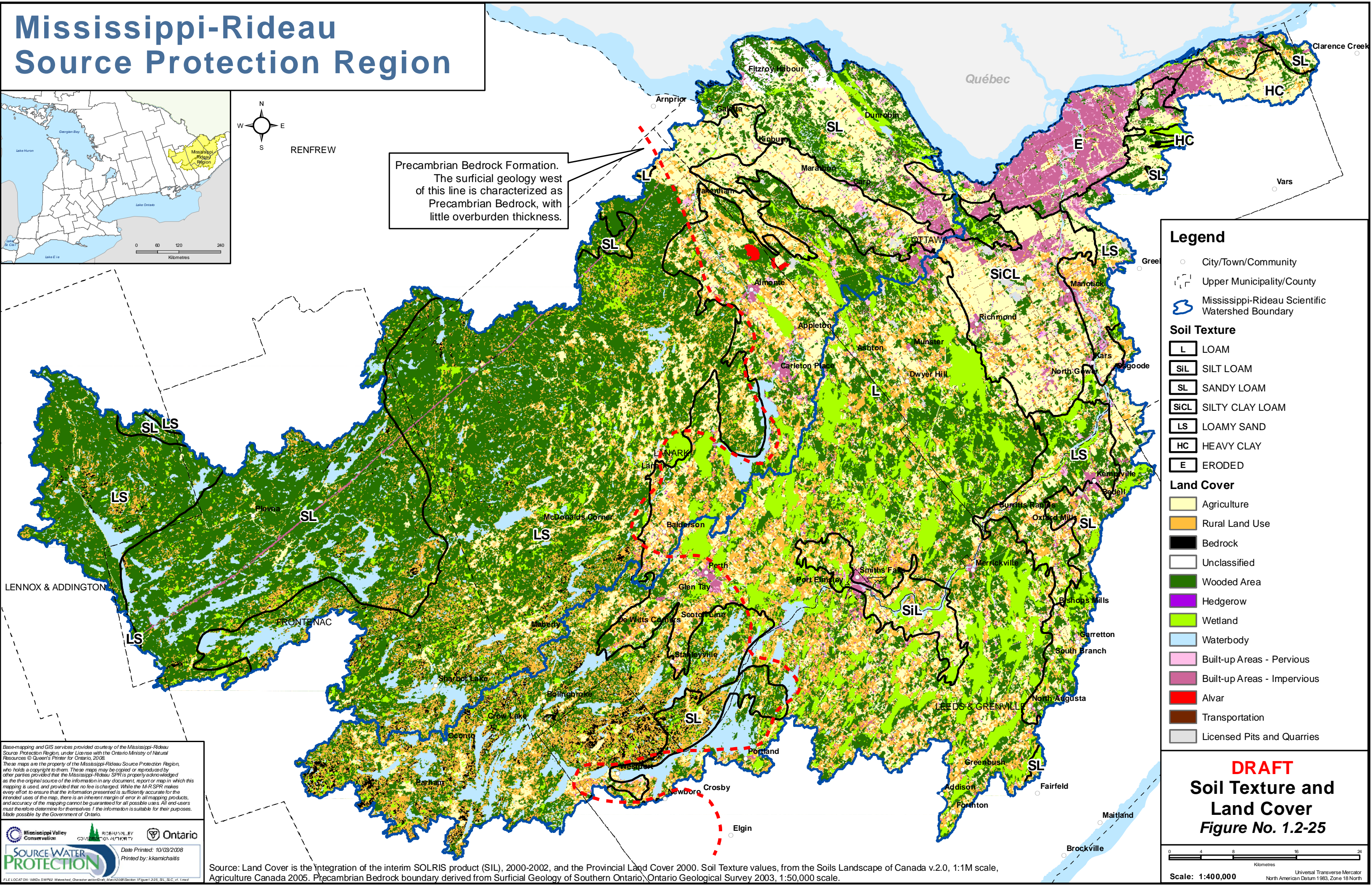


# Mississippi-Rideau Source Protection Region



Precambrian Bedrock Formation. The surficial geology west of this line is characterized as Precambrian Bedrock, with little overburden thickness.



### Legend

- City/Town/Community
- Upper Municipality/County
- Mississippi-Rideau Scientific Watershed Boundary

### Soil Texture

- LOAM
- SILT LOAM
- SANDY LOAM
- SILTY CLAY LOAM
- LOAMY SAND
- HEAVY CLAY
- ERODED

### Land Cover

- Agriculture
- Rural Land Use
- Bedrock
- Unclassified
- Wooded Area
- Hedgerow
- Wetland
- Waterbody
- Built-up Areas - Pervious
- Built-up Areas - Impervious
- Alvar
- Transportation
- Licensed Pits and Quarries

Base-mapping and GIS services provided courtesy of the Mississippi-Rideau Source Protection Region, under License with the Ontario Ministry of Natural Resources © Queen's Printer for Ontario, 2008. These maps are the property of the Mississippi-Rideau Source Protection Region, who holds a copyright to them. These maps may be copied or reproduced by other parties provided that the Mississippi-Rideau SPR is properly acknowledged as the original source of the information in any document, report or map in which this mapping is used, and provided that no fee is charged. While the M-R SPR makes every effort to ensure that the information presented is sufficiently accurate for the intended uses of the map, there is an inherent margin of error in all mapping products, and accuracy of the mapping cannot be guaranteed for all possible uses. All end-users must therefore determine for themselves if the information is suitable for their purposes. Made possible by the Government of Ontario.

Source Water PROTECTION  
Date Printed: 10/03/2008  
Printed by: kkamichalis

Source: Land Cover is the integration of the interim SOLRIS product (SIL), 2000-2002, and the Provincial Land Cover 2000. Soil Texture values, from the Soils Landscape of Canada v.2.0, 1:1M scale, Agriculture Canada 2005. Precambrian Bedrock boundary derived from Surficial Geology of Southern Ontario, Ontario Geological Survey 2003, 1:50,000 scale.

**DRAFT**  
**Soil Texture and Land Cover**  
**Figure No. 1.2-25**

Scale: 1:400,000  
Universal Transverse Mercator  
North American Datum 1983, Zone 18 North