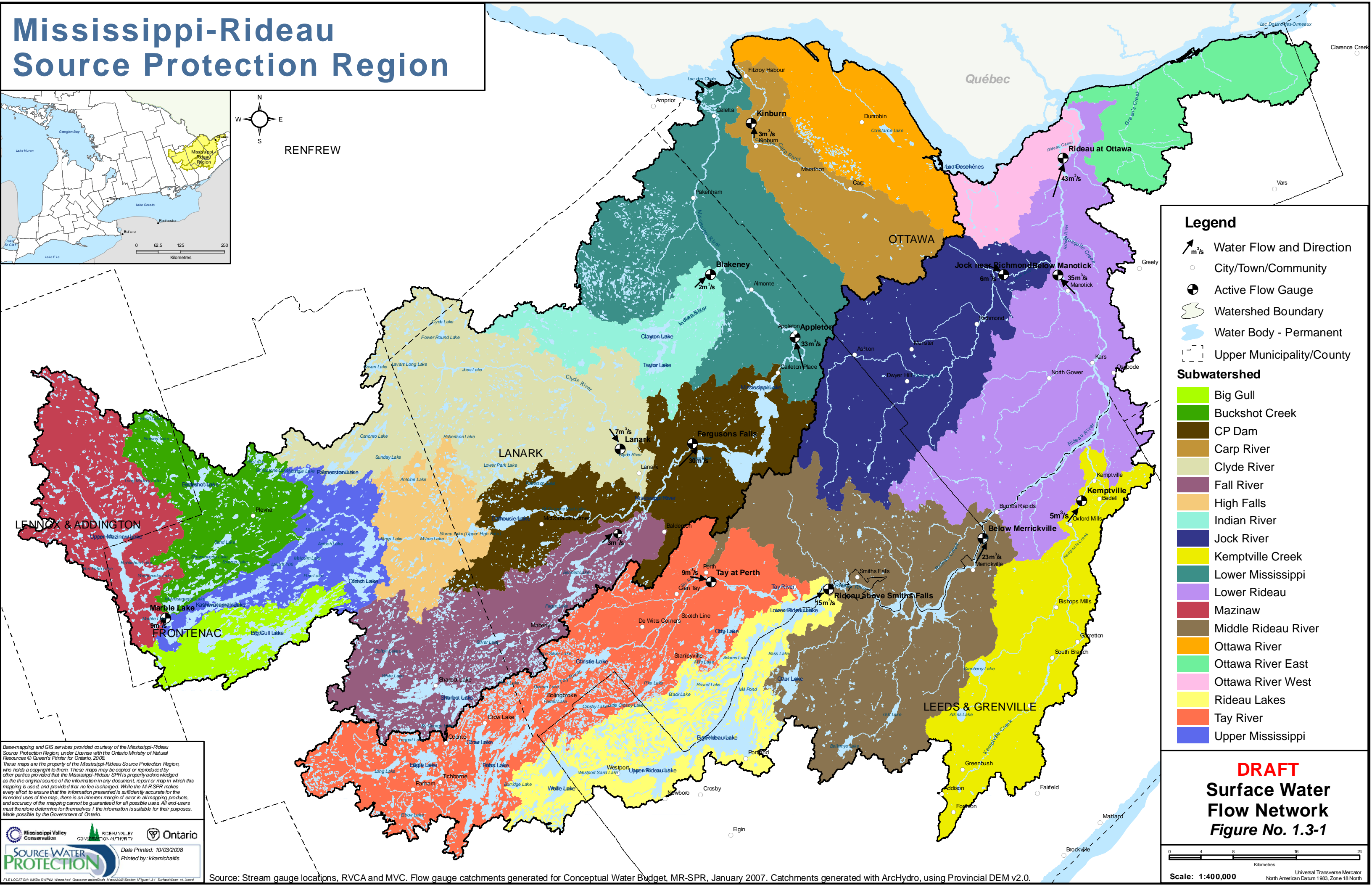
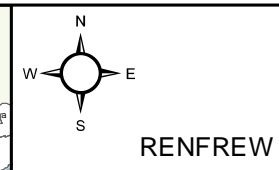
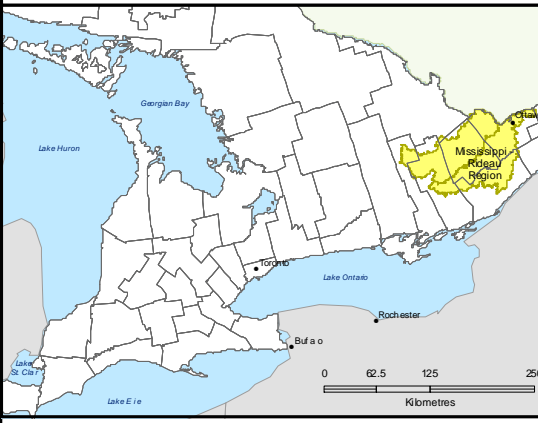


Mississippi-Rideau Source Protection Region



Legend

- Water Flow and Direction
- City/Town/Community
- Active Flow Gauge
- Watershed Boundary
- Water Body - Permanent
- Upper Municipality/County

Subwatershed

- Big Gull
- Buckshot Creek
- CP Dam
- Carp River
- Clyde River
- Fall River
- High Falls
- Indian River
- Jock River
- Kemptville Creek
- Lower Mississippi
- Lower Rideau
- Mazinaw
- Middle Rideau River
- Ottawa River
- Ottawa River East
- Ottawa River West
- Rideau Lakes
- Tay River
- Upper Mississippi

Base-mapping and GIS services provided courtesy of the Mississippi-Rideau Source Protection Region, under License with the Ontario Ministry of Natural Resources © Queen's Printer for Ontario, 2008. These maps are the property of the Mississippi-Rideau Source Protection Region, who holds a copyright to them. These maps may be copied or reproduced by other parties provided that the Mississippi-Rideau SPR is properly acknowledged as the original source of the information in any document, report or map in which this mapping is used, and provided that no fee is charged. While the M-R SPR makes every effort to ensure that the information presented is sufficiently accurate for the intended uses of the map, there is an inherent margin of error in all mapping products, and accuracy of the mapping cannot be guaranteed for all possible uses. All end-users must therefore determine for themselves if the information is suitable for their purposes. Made possible by the Government of Ontario.

Source Water PROTECTION
 Date Printed: 10/03/2008
 Printed by: kkamichalis

Source: Stream gauge locations, RVCA and MVC. Flow gauge catchments generated for Conceptual Water Budget, MR-SPR, January 2007. Catchments generated with ArcHydro, using Provincial DEM v2.0.

DRAFT

Surface Water Flow Network

Figure No. 1.3-1

Scale: 1:400,000

Universal Transverse Mercator
North American Datum 1983, Zone 18 North