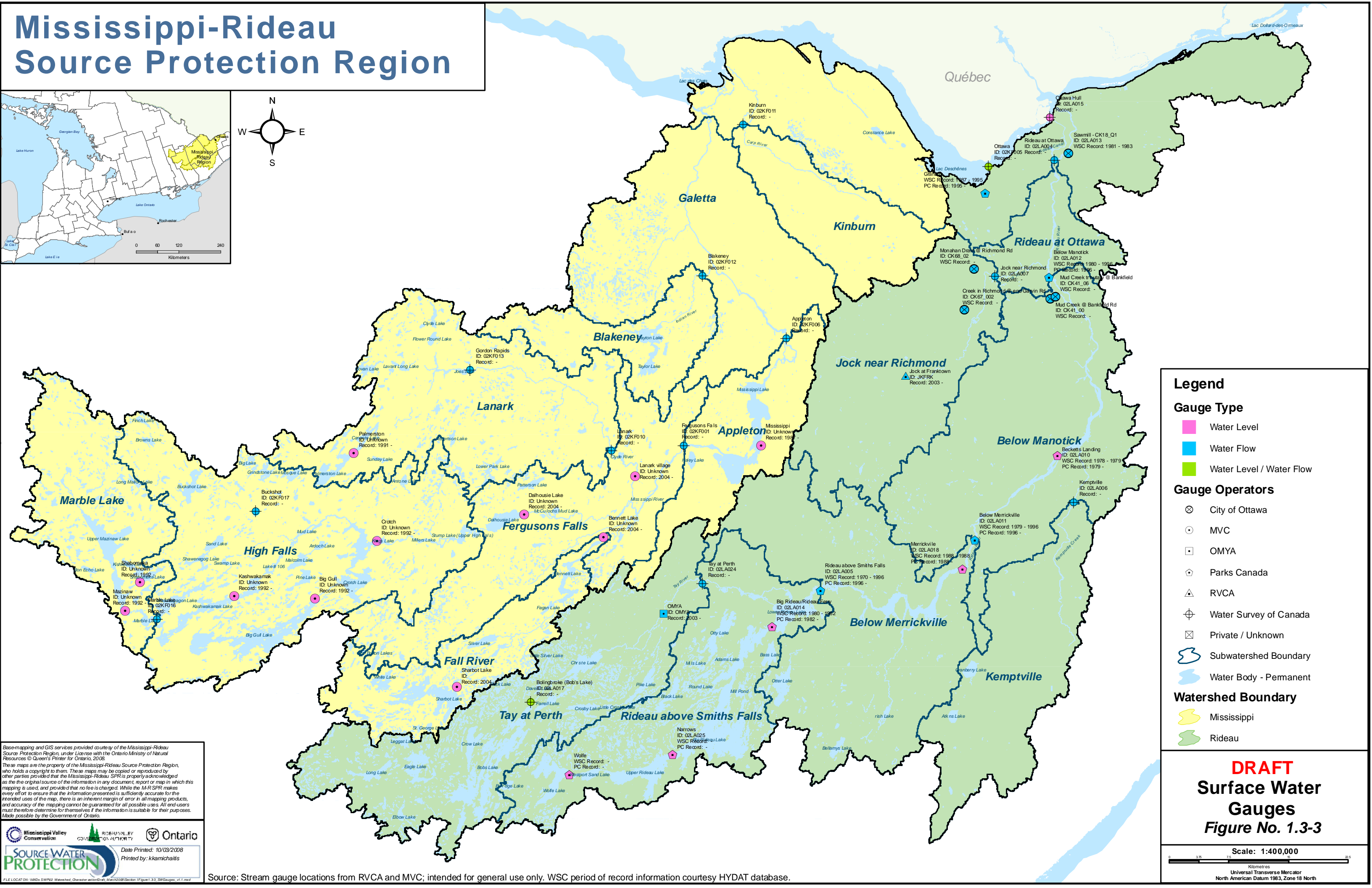
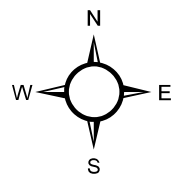
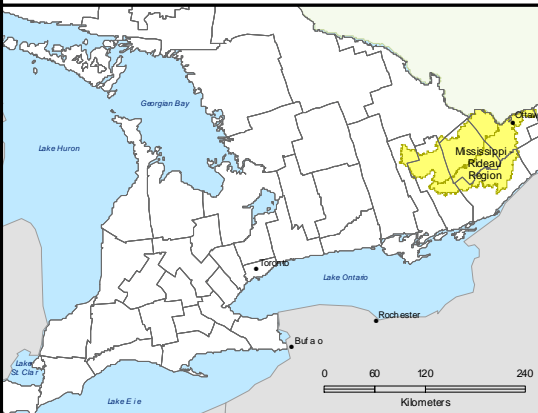


Mississippi-Rideau Source Protection Region



Legend

Gauge Type

- Water Level (Pink square)
- Water Flow (Blue square)
- Water Level / Water Flow (Green square)

Gauge Operators

- City of Ottawa (Circle with cross)
- MVC (Circle with dot)
- OMYA (Square with dot)
- Parks Canada (House icon)
- RVCA (Triangle with dot)
- Water Survey of Canada (Circle with crosshair)
- Private / Unknown (Square with X)

Subwatershed Boundary

- Subwatershed Boundary (Dashed line)

Water Body - Permanent

- Water Body - Permanent (Blue area)

Watershed Boundary

- Mississippi (Yellow outline)
- Rideau (Green outline)

Base-mapping and GIS services provided courtesy of the Mississippi-Rideau Source Protection Region, under License with the Ontario Ministry of Natural Resources © Queen's Printer for Ontario, 2008.

These maps are the property of the Mississippi-Rideau Source Protection Region, who holds a copyright to them. These maps may be copied or reproduced by other parties provided that the Mississippi-Rideau SPR is properly acknowledged as the original source of the information in any document, report or map in which this mapping is used, and provided that no fee is charged. While the M-R-SPR makes every effort to ensure that the information presented is sufficiently accurate for the intended uses of the map, there is an inherent margin of error in all mapping products, and accuracy of the mapping cannot be guaranteed for all possible uses. All end-users must therefore determine for themselves if the information is suitable for their purposes. Made possible by the Government of Ontario.

Source Water PROTECTION

Date Printed: 10/03/2008
Printed by: kkamichalis

Source: Stream gauge locations from RVCA and MVC; intended for general use only. WSC period of record information courtesy HYDAT database.

DRAFT

Surface Water Gauges

Figure No. 1.3-3

Scale: 1:400,000

Universal Transverse Mercator
North American Datum 1983, Zone 18 North