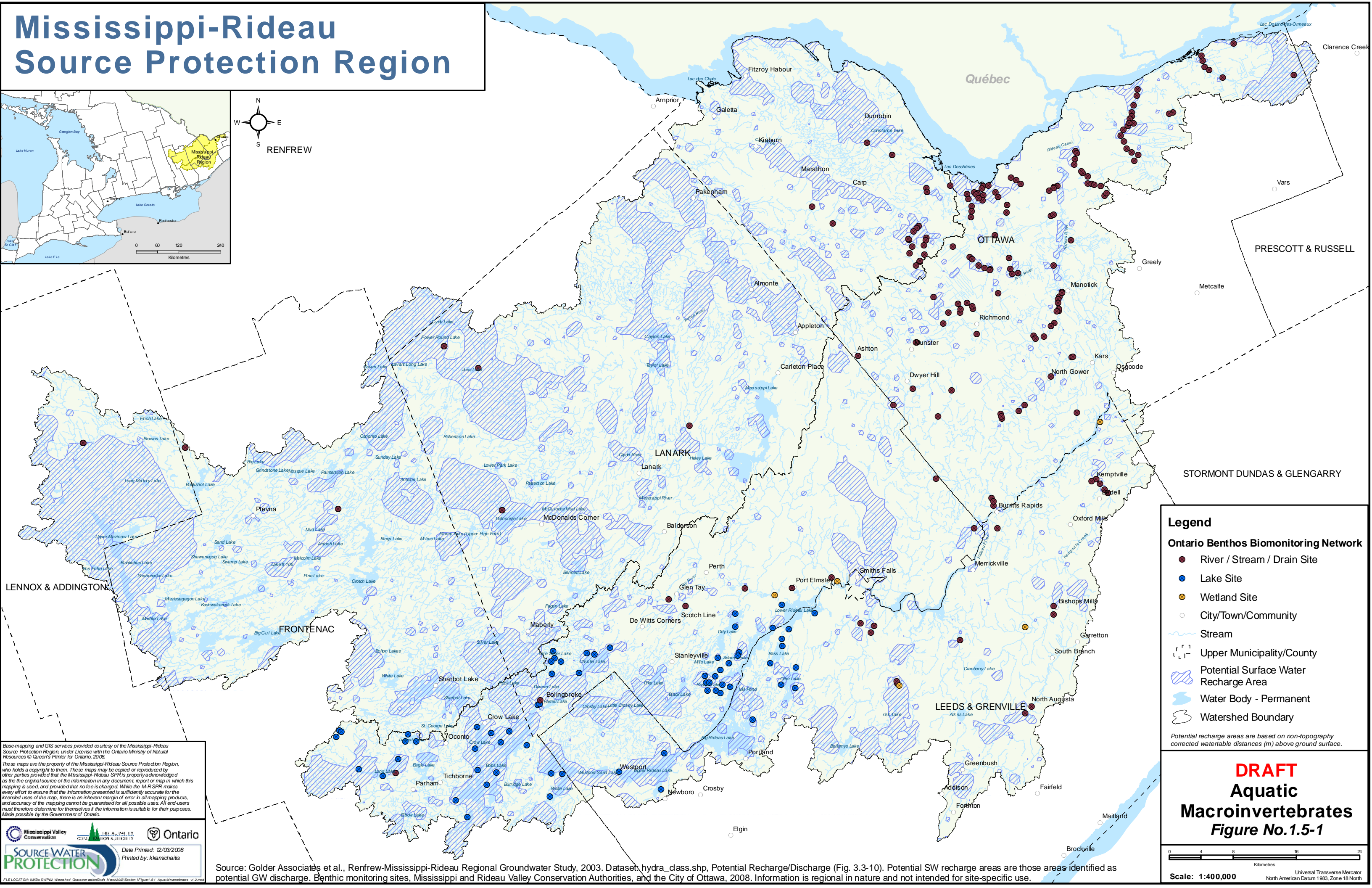
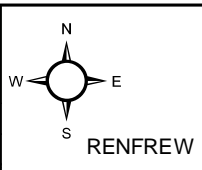
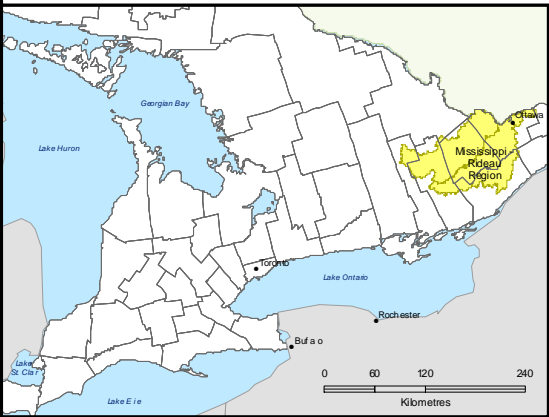


# Mississippi-Rideau Source Protection Region



**Legend**

- River / Stream / Drain Site
- Lake Site
- Wetland Site
- City/Town/Community
- Stream
- Upper Municipality/County
- Potential Surface Water Recharge Area
- Water Body - Permanent
- Watershed Boundary

*Potential recharge areas are based on non-topography corrected watertable distances (m) above ground surface.*

Base-mapping and GIS services provided courtesy of the Mississippi-Rideau Source Protection Region, under License with the Ontario Ministry of Natural Resources © Queen's Printer for Ontario, 2008.

These maps are the property of the Mississippi-Rideau Source Protection Region, who holds a copyright to them. These maps may be copied or reproduced by other parties provided that the Mississippi-Rideau SPR is properly acknowledged as the original source of the information in any document, report or map in which this mapping is used, and provided that no fee is charged. While the M-R SPR makes every effort to ensure that the information presented is sufficiently accurate for the intended uses of the map, there is an inherent margin of error in all mapping products, and accuracy of the mapping cannot be guaranteed for all possible uses. All end-users must therefore determine for themselves if the information is suitable for their purposes. Made possible by the Government of Ontario.

Source Water PROTECTION

Date Printed: 12/03/2008  
Printed by: kkmichalits

Source: Golder Associates et al., Renfrew-Mississippi-Rideau Regional Groundwater Study, 2003. Dataset: hydra\_class.shp, Potential Recharge/Discharge (Fig. 3.3-10). Potential SW recharge areas are those areas identified as potential GW discharge. Benthic monitoring sites, Mississippi and Rideau Valley Conservation Authorities, and the City of Ottawa, 2008. Information is regional in nature and not intended for site-specific use.

**DRAFT**

**Aquatic Macroinvertebrates**

**Figure No.1.5-1**

Scale: 1:400,000

Universal Transverse Mercator  
North American Datum 1983, Zone 18 North