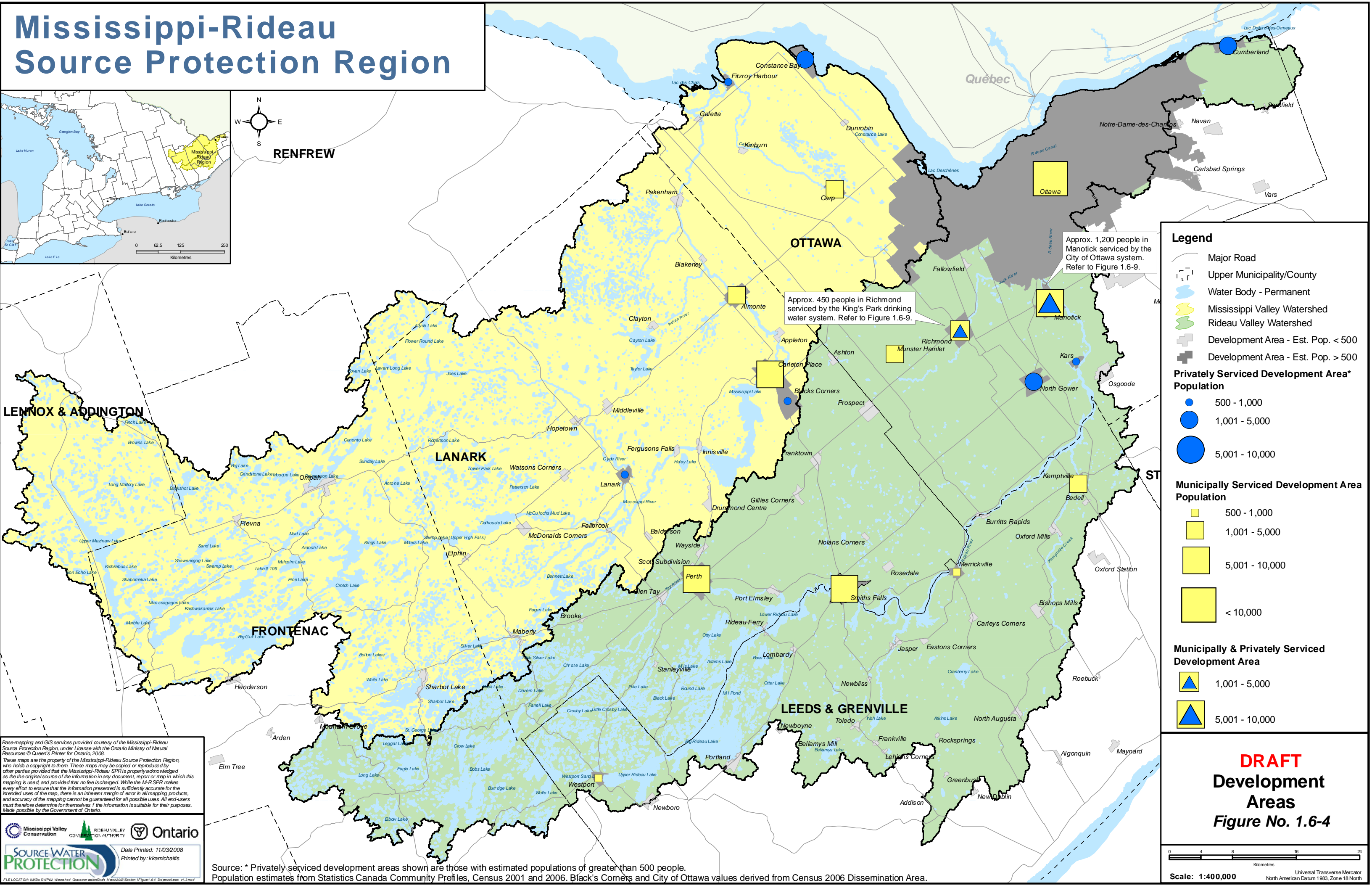
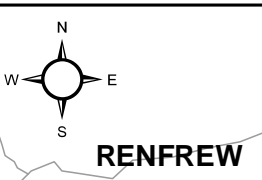
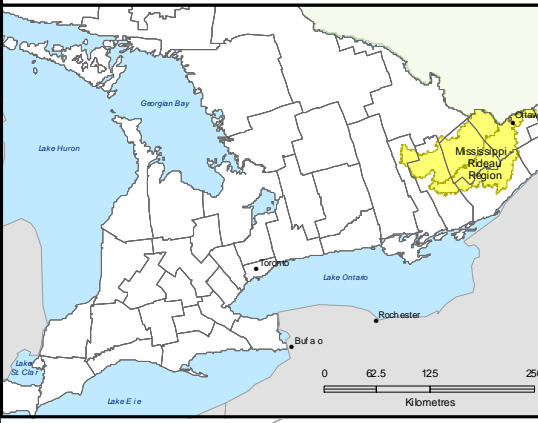


Mississippi-Rideau Source Protection Region



Legend

- Major Road
- Upper Municipality/County
- Water Body - Permanent
- Mississippi Valley Watershed
- Rideau Valley Watershed
- Development Area - Est. Pop. < 500
- Development Area - Est. Pop. > 500

Privately Serviced Development Area* Population

- 500 - 1,000
- 1,001 - 5,000
- 5,001 - 10,000

Municipally Serviced Development Area Population

- 500 - 1,000
- 1,001 - 5,000
- 5,001 - 10,000
- < 10,000

Municipally & Privately Serviced Development Area

- 1,001 - 5,000
- 5,001 - 10,000

Approx. 450 people in Richmond serviced by the King's Park drinking water system. Refer to Figure 1.6-9.

Approx. 1,200 people in Manotick serviced by the City of Ottawa system. Refer to Figure 1.6-9.

Base-mapping and GIS services provided courtesy of the Mississippi-Rideau Source Protection Region, under license with the Ontario Ministry of Natural Resources © Queen's Printer for Ontario, 2008. These maps are the property of the Mississippi-Rideau Source Protection Region, who holds a copyright to them. These maps may be copied or reproduced by other parties provided that the Mississippi-Rideau SPR is properly acknowledged as the original source of the information in any document, report or map in which this mapping is used, and provided that no fee is charged. While the M-R SPR makes every effort to ensure that the information presented is sufficiently accurate for the intended uses of the map, there is an inherent margin of error in all mapping products, and accuracy of the mapping cannot be guaranteed for all possible uses. All end-users must therefore determine for themselves if the information is suitable for their purposes. Made possible by the Government of Ontario.

Source Water PROTECTION

Date Printed: 11/03/2008
Printed by: kkmichalis

Source: * Privately serviced development areas shown are those with estimated populations of greater than 500 people. Population estimates from Statistics Canada Community Profiles, Census 2001 and 2006. Black's Corners and City of Ottawa values derived from Census 2006 Dissemination Area.

DRAFT
Development Areas
Figure No. 1.6-4

Scale: 1:400,000

Universal Transverse Mercator
North American Datum 1983, Zone 18 North