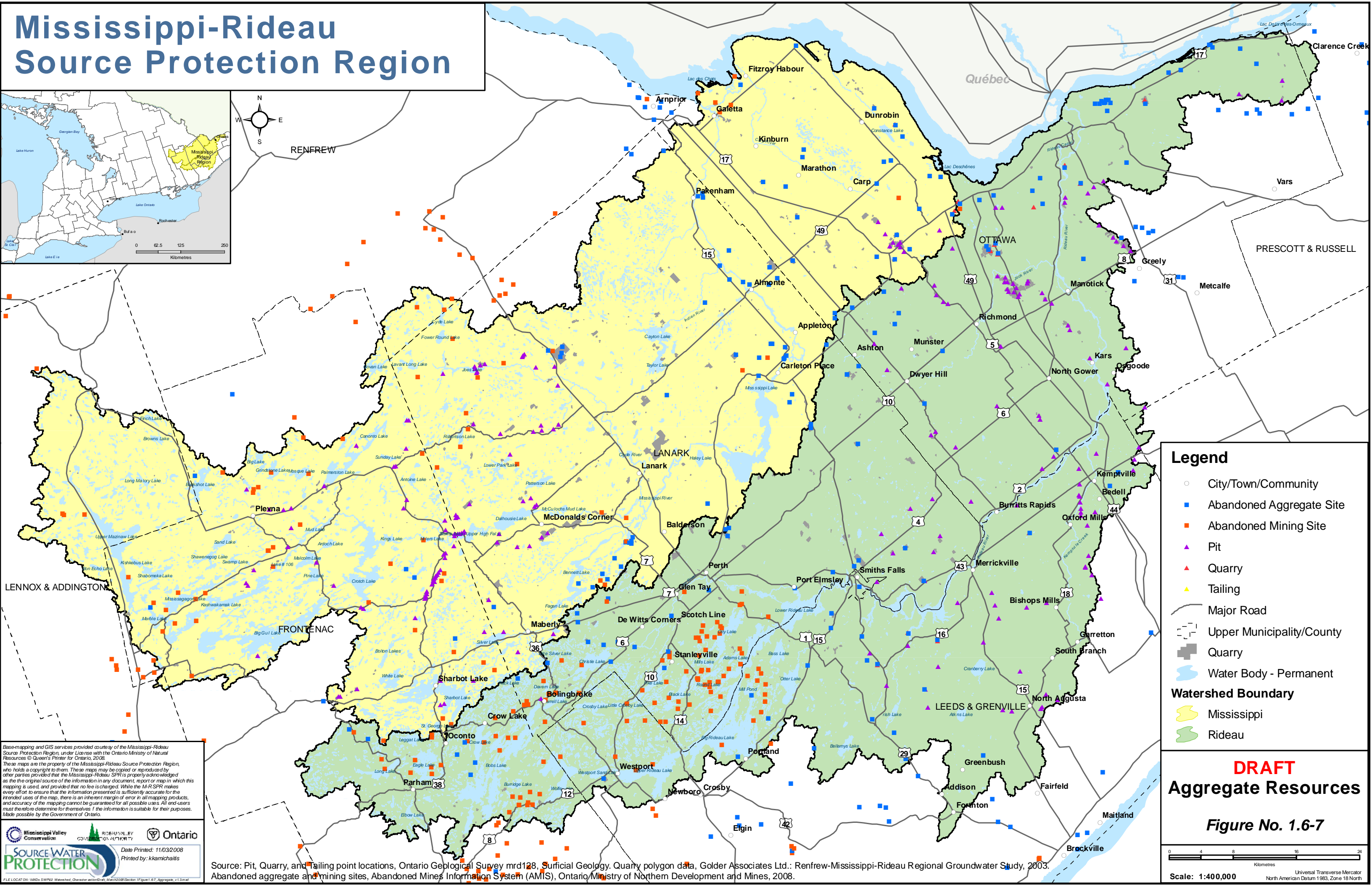
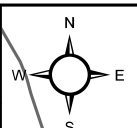
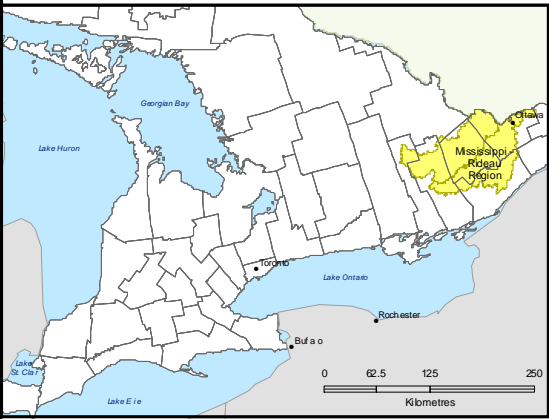


Mississippi-Rideau Source Protection Region



Legend

- City/Town/Community
- Abandoned Aggregate Site
- Abandoned Mining Site
- ▲ Pit
- ▲ Quarry
- ▲ Tailing
- Major Road
- - - Upper Municipality/County
- Quarry
- Water Body - Permanent

Watershed Boundary

- Mississippi
- Rideau

DRAFT

Aggregate Resources

Figure No. 1.6-7

Scale: 1:400,000

Universal Transverse Mercator
North American Datum 1983, Zone 18 North

Base-mapping and GIS services provided courtesy of the Mississippi-Rideau Source Protection Region, under License with the Ontario Ministry of Natural Resources © Queen's Printer for Ontario, 2008.
 These maps are the property of the Mississippi-Rideau Source Protection Region, who holds a copyright to them. These maps may be copied or reproduced by other parties provided that the Mississippi-Rideau SPR is properly acknowledged as the original source of the information in any document, report or map in which this mapping is used, and provided that no fee is charged. While the M-R SPR makes every effort to ensure that the information presented is sufficiently accurate for the intended uses of the map, there is an inherent margin of error in all mapping products, and accuracy of the mapping cannot be guaranteed for all possible uses. All end users must therefore determine for themselves if the information is suitable for their purposes. Made possible by the Government of Ontario.

DATE PRINTED: 11/03/2008
 PRINTED BY: kkamichalis

Source: Pit, Quarry, and Tailing point locations, Ontario Geological Survey mrd128, Surficial Geology. Quarry polygon data, Golder Associates Ltd.: Renfrew-Mississippi-Rideau Regional Groundwater Study, 2003. Abandoned aggregate and mining sites, Abandoned Mines Information System (AMIS), Ontario Ministry of Northern Development and Mines, 2008.