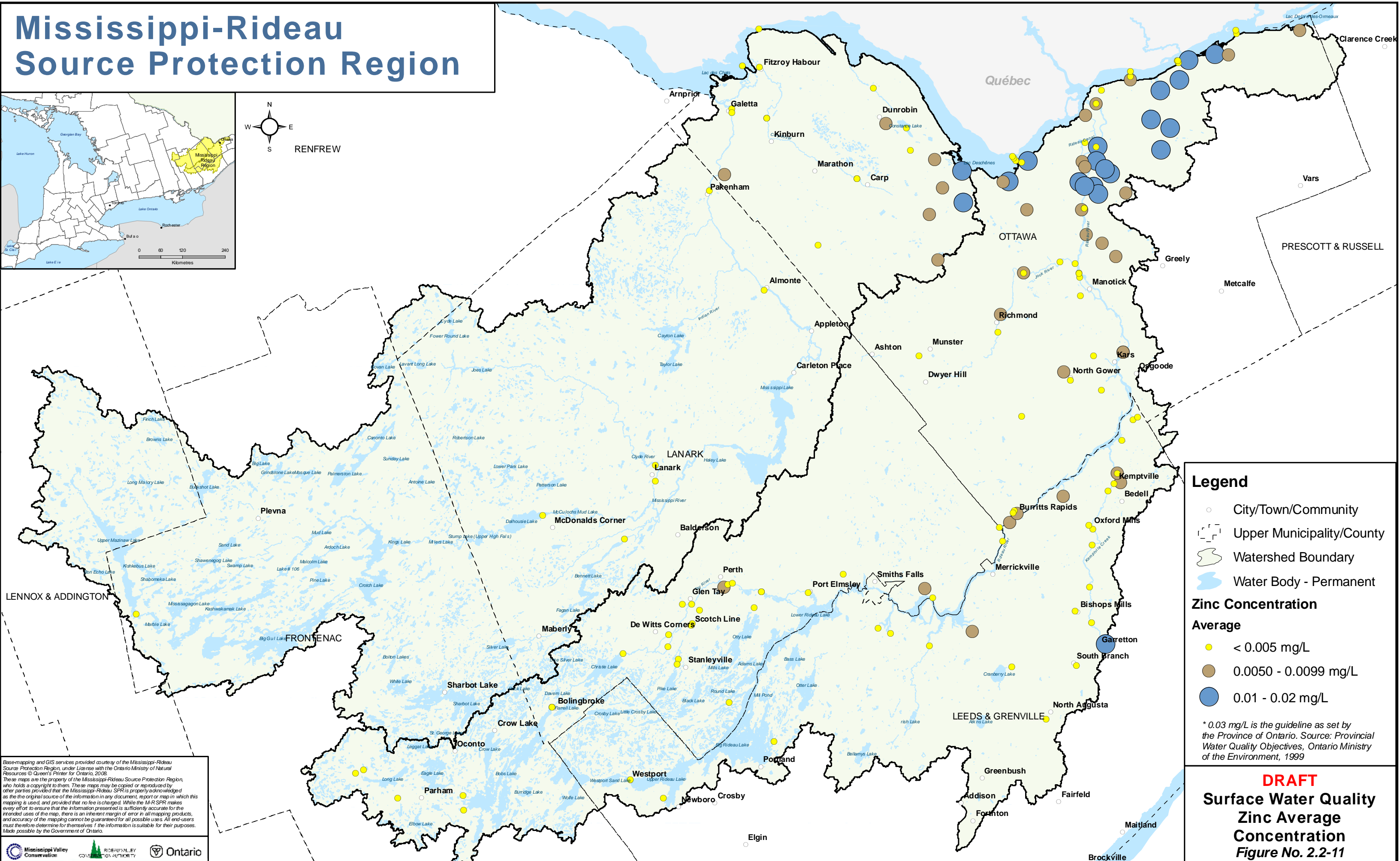
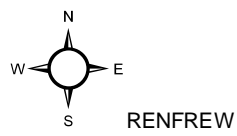
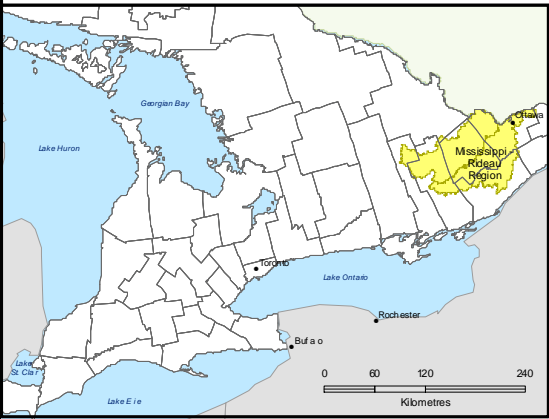


Mississippi-Rideau Source Protection Region



Legend

- City/Town/Community
- Upper Municipality/County
- Watershed Boundary
- Water Body - Permanent

Zinc Concentration

Average

- < 0.005 mg/L
- 0.0050 - 0.0099 mg/L
- 0.01 - 0.02 mg/L

** 0.03 mg/L is the guideline as set by the Province of Ontario. Source: Provincial Water Quality Objectives, Ontario Ministry of the Environment, 1999*

Base-mapping and GIS services provided courtesy of the Mississippi-Rideau Source Protection Region, under License with the Ontario Ministry of Natural Resources © Queen's Printer for Ontario, 2008.
 These maps are the property of the Mississippi-Rideau Source Protection Region, who holds a copyright to them. These maps may be copied or reproduced by other parties provided that the Mississippi-Rideau SPR is properly acknowledged as the original source of the information in any document, report or map in which this mapping is used, and provided that no fee is charged. While the M-R SPR makes every effort to ensure that the information presented is sufficiently accurate for the intended uses of the map, there is an inherent margin of error in all mapping products, and accuracy of the mapping cannot be guaranteed for all possible uses. All end-users must therefore determine for themselves if the information is suitable for their purposes. Made possible by the Government of Ontario.

Date Printed: 14/03/2008
 Printed by: kkmichalis

Source: Water quality monitoring site locations shown or mapped are those which monitor for the given parameter. Sites that do not collect data for the mapped parameter are not shown. Data is collected by the RVCA, MVC, and the City of Ottawa for the PWQMN, or as part of in-house water quality programs.

DRAFT

**Surface Water Quality
 Zinc Average
 Concentration
 Figure No. 2.2-11**

Scale: 1:400,000

Universal Transverse Mercator
 North American Datum 1983, Zone 18 North