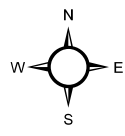
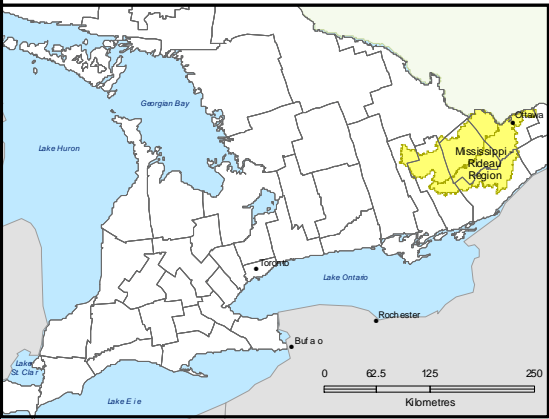
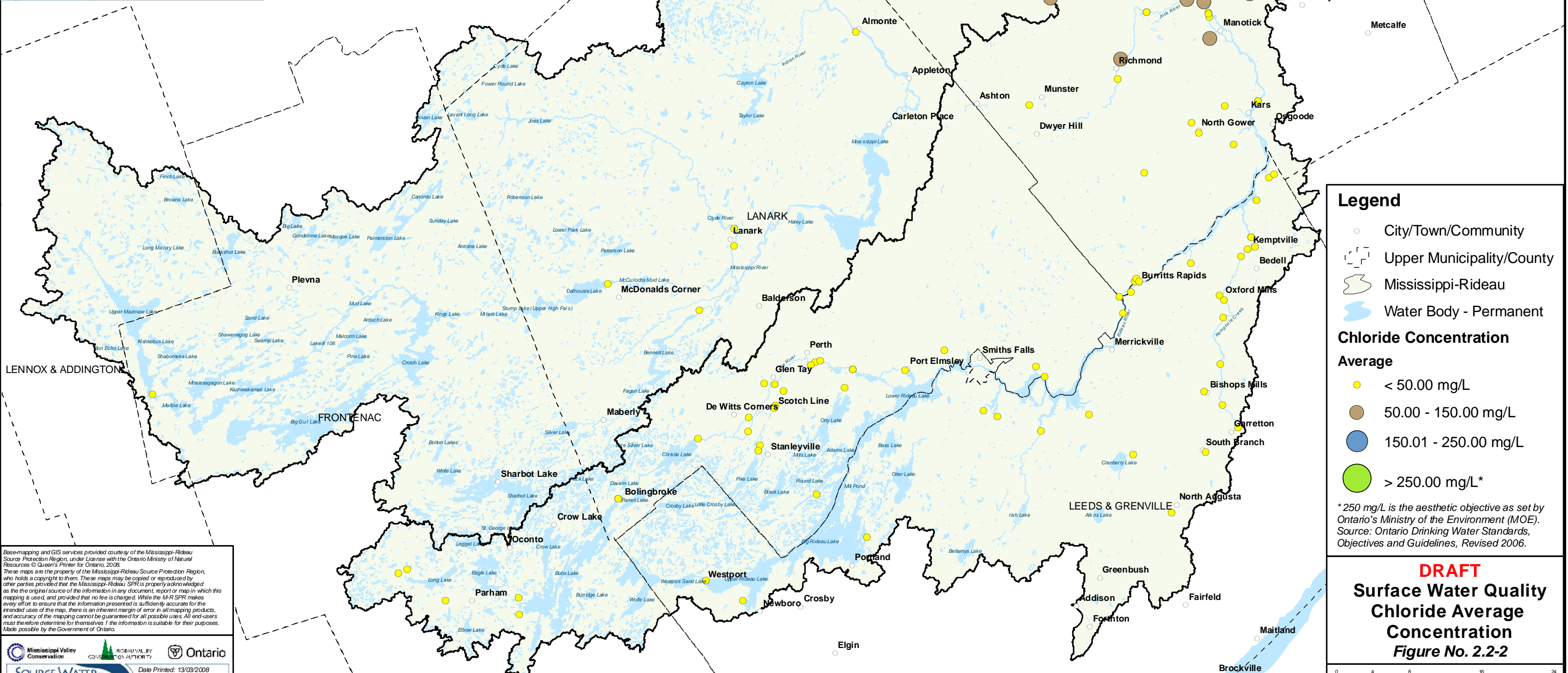


Mississippi-Rideau Source Protection Region



RENFREW



Legend

- City/Town/Community
- Upper Municipality/County
- Mississippi-Rideau
- Water Body - Permanent

Chloride Concentration Average

- < 50.00 mg/L
- 50.00 - 150.00 mg/L
- 150.01 - 250.00 mg/L
- > 250.00 mg/L*

*250 mg/L is the aesthetic objective as set by Ontario's Ministry of the Environment (MOE). Source: Ontario Drinking Water Standards, Objectives and Guidelines, Revised 2006.

Base-mapping and GIS services provided courtesy of the Mississippi-Rideau Source Protection Region, under license with the Ontario Ministry of Natural Resources © Queen's Printer for Ontario, 2008. These maps are the property of the Mississippi-Rideau Source Protection Region, who holds a copyright to them. These maps may be copied or reproduced by other parties provided that the Mississippi-Rideau SPR is properly acknowledged as the original source of the information in any document, report or map in which this mapping is used, and provided that no fee is charged. While the M-R SPR makes every effort to ensure that the information presented is sufficiently accurate for the intended uses of the map, there is an inherent margin of error in all mapping products, and accuracy cannot be guaranteed for all possible uses. All end-users must therefore determine for themselves if the information is suitable for their purposes. Made possible by the Government of Ontario.

DATE PRINTED: 13/03/2008
PRINTED BY: kkamichalis

Source: Water quality monitoring site locations shown or mapped are those which monitor for the given parameter. Sites that do not collect data for the mapped parameter are not shown. Data is collected by the RVCA, MVC, and the City of Ottawa for the PWQMN, or as part of in-house water quality programs.

DRAFT
Surface Water Quality Chloride Average Concentration
Figure No. 2.2-2

Scale: 1:400,000
Universal Transverse Mercator
North American Datum 1983, Zone 18 North