

**Date:** April 2, 2026  
**Time:** 1 pm  
**Location:** Rideau Valley Conservation Authority Office  
 3889 Rideau Valley Drive, Manotick ON

## Source Protection Committee Meeting

Item Number	Item Title	Page	Person Responsible
1.0	<b>Welcome and Introductions</b> a. Agenda Review b. Notice of Proxies c. Adoption of the Agenda (D) d. Declarations of Interest e. Approval of Minutes –April 3, 2025 (D) ▶ draft minutes attached as a separate document		<i>Interim Chair</i>
	<b>Staff Reports, Updates and Presentation</b>		
2.0	Source Protection Staff Update (presentation) .....(I)		<i>Marika Livingston</i>
3.0	Annual Progress Reporting ..... (D)	1-4	<i>Marika Livingston</i>
	<b>Other</b>		
4.0	Other Business		<i>Interim Chair</i>
5.0	Member Inquiries		<i>Interim Chair</i>
6.0	Next Meeting -TBD		<i>Interim Chair</i>
7.0	Adjournment		

**(I) = Information (D) = Decision**

**Delegations:** If you wish to speak to an item on the Agenda please contact Marika Livingston before the meeting ([marika.livingston@mrsourcewater.ca](mailto:marika.livingston@mrsourcewater.ca)) or 613-692-3571 x 1148)

### 3.0 2025 Annual Progress Report to MECP

**Date:** April 2, 2026  
**To:** Mississippi-Rideau Source Protection Committee  
**From:** Marika Livingston, Project Manager  
Mississippi-Rideau Source Protection Region

---

#### **Recommendation:**

That the Mississippi-Rideau Source Protection Committee receive for review the draft Annual Progress Report for 2025;

And further, that the Mississippi-Rideau Source Protection Committee assess and grade the progress achieved so far, providing a grade achieved through discussion at the meeting of April 2, 2026 to be recorded in the meeting minutes;

And further that the Mississippi-Rideau Source Protection Committee direct staff to summarize the comments, notes, grading and discussion and provide the Annual Progress Report to the Source Protection Authority for their approval.

#### **Annual Reporting Requirements**

The *Clean Water Act* (Section 46) requires the Annual Progress Report to be prepared and:

- Describe measures taken to implement the Plan
- Describe the results of monitoring programs
- Describe extent to which objectives set out in the plan are being achieved
- Contain other information as prescribed by the regulations

Ontario Regulation 287/07 (Section 52) describes other information to be included:

- Description and reasons for policy delays
- Description of steps taken to address deficiencies in information
- Summary of the report prepared and submitted by the RMO each year
- Any other information the SPA considers advisable

#### **Background**

The Source Protection Authorities are required to submit an Annual Progress Report each year, under Section 46 Ontario's *Clean Water Act*. The report is to be submitted to the Ministry of Environment, Conservation and Parks (MECP) by May 1 of each year and is to be provided to the SPC for comment at least 30 days prior to this. The report summarizes:

- Measures taken to implement the source protection plan;
- Results of monitoring policies;
- The extent to which objectives of the plan are being achieved; and,
- Other information that might be required by the regulation.

This is the ninth Annual Progress Report since the Source Protection Plan came into effect on January 1, 2015.

There are two components of the progress reporting, a public facing report document and a supplemental form. The MECP has an electronic reporting tool to summarize responses for the 2025 supplemental form and annual report.

The purpose of this staff report is to provide guidance to assist with the interpretation of the Annual Progress Reporting documents, and to outline the process for the SPC review of these documents.

Committee members have been provided with a draft version of both the public facing report and the supplemental reporting form prior to the meeting. Committee members were provided with a comment sheet for written comments and are asked to provide these if desired, by April 2.

Staff will provide a presentation summarizing the reporting information, and the committee will have the chance to verbally discuss and come to a consensus on the report scoring. The discussion and scoring will be summarized in the reports.

### **Implementing Bodies**

The policies in the Source Protection Plan are implemented by “implementing bodies”, who report to the Source Protection Authority each year, usually by February 1, according to the monitoring policies in the Source Protection Plan:

- Municipalities (15 with legally binding responsibilities, 16 with only non-legally binding responsibilities)
- Risk Management Staff
- Principal Authority – approval agency for septic systems – Health Unit, municipality or Conservation Authority depending on location
- Ontario Ministries (OMAFRA, MECP, MNRF, MTO, MGCS/TSSA and MMAH)
- Source Protection Authority (SPA) – the Conservation Authority in its legislated role under the *Clean Water Act*

Reports were received from most implementing bodies, compiled and analyzed by Source Protection staff to respond to the reportable items in the public facing and supplementary Annual Progress Reporting forms.

### **Reportable Themes**

The public and supplemental reporting forms are grouped into themes, corresponding to the reporting that was provided by implementing bodies. Themes include overall progress (implementation status) of policies, monitoring policy implementation, municipal progress, septic inspections, risk management plans, provincial progress, and source protection awareness. There are ten general sections in the public facing annual report, and over 60 reportable items included in the supplemental reporting form for the MECP.

## Public Facing Annual Progress Report

The public portion of the Annual Progress Report includes an introductory section which includes Source Protection Committee comments, information about the Mississippi-Rideau Source Protection Region, and an overall 'grade' for the region in achieving source protection plan objectives. Where the form asks for grading, there are three options for the SPC:

- P: Progressing Well/On Target, meaning that the majority of the source protection plan policies have been implemented and/or are progressing
- S: Satisfactory, meaning that some of the source protection plan policies have been implemented and/or are progressing
- L: Limited progress, meaning that a few of the source protection plan policies have been implemented and/or are progressing

It has ten general sections, that pull information from the MECP supplemental reporting form, and include:

1. **Source Protection Plan Policies:** this section reports a percentage of the policies that are considered to be 'implemented' and 'in progress' in the region. It requires the SPC to grade the overall plan implementation progress, based on information gathered from the implementing bodies. Progress has been made in implementing many policies in the Source Protection Plan according to the timelines set out in the plan. There are 56 policies addressing drinking water threat activities, 50 of which address significant drinking water threat activities, and 6 that address moderate-low drinking water threat activities. There are 16 policies that are not directly associated with addressing specific drinking water threat activities, such as administrative policies, education-outreach, transportation corridors and transport pathways and 15 monitoring policies. Most of the policies are either in progress or are considered implemented.
2. **Municipal Progress:** this section summarizes information on municipal implementation progress for land-use planning and asks the committee to grade the overall progress towards implementing these policies. It also includes information on day to day planning decisions from the municipal progress reports.
3. **Septic Inspections:** there are two on-site sewage systems that require inspection every five years, according to the Building Code. These two systems are inspected by the Principal Authority. The committee is asked to grade the overall progress towards implementing these policies.
4. **Risk Management Plans:** there are several plans required at sites throughout the Mississippi-Rideau Region. Several plans have been negotiated and agreed to. More detailed information is provided in the supplemental form outlining the number of inspections, and information is available outlining delays in implementing risk management policies. The committee is asked to grade the overall progress towards implementing these policies.

5. **Provincial Progress:** this section gives a general summary of information on the reviews by provincial implementing bodies and reports on the progress reviewing previously issued provincial approvals and asks the committee to grade the overall progress.
6. **Awareness and Change in Behaviour:** this report section provides information on road signs in the region and on education and outreach programs and tools in use. No grading is required.
7. **Source Protection Plan Policies: Summary of Delays:** this section discusses policy tools where there are delays in implementation, causing the policy to not meet the dates specified in the source protection plan. In the Mississippi-Rideau Region, this section focuses on discussing a few risk management policies for existing activities. No grading is required.
8. **Source Water Quality: Monitoring and Actions:** no issues have been identified in our assessment reports regarding the quality of municipal drinking water sources, so this section has not been completed. No grading is required.
9. **Science-based Assessment Reports: Work Plans:** no work plans were required to be implemented for our assessment reports, so this section has not been completed. No grading is required.
10. **More from the Watershed:** this section highlights some of the feedback received during the annual reporting process from municipalities with legally binding policy responsibilities. No grading is required.

### **Annual Progress Reporting Supplemental Form for Source Protection**

This form (now online) is meant to provide a standardized form across the province for sharing critical information from the source protection authorities on implementation progress. It is to be completed and provided to the MECP by May 1, 2026.

The supplemental report was made available to our SPC in previous years, however due to a change in practice (by MECP) this report has expanded to 80 pages of information and will not be included. If you would like a copy, please contact the Project Manager.

### **Attachments**

1. Source Protection Annual Progress Report – Draft for SPC review (public facing report)
2. Comment Sheet – Annual Progress Reporting

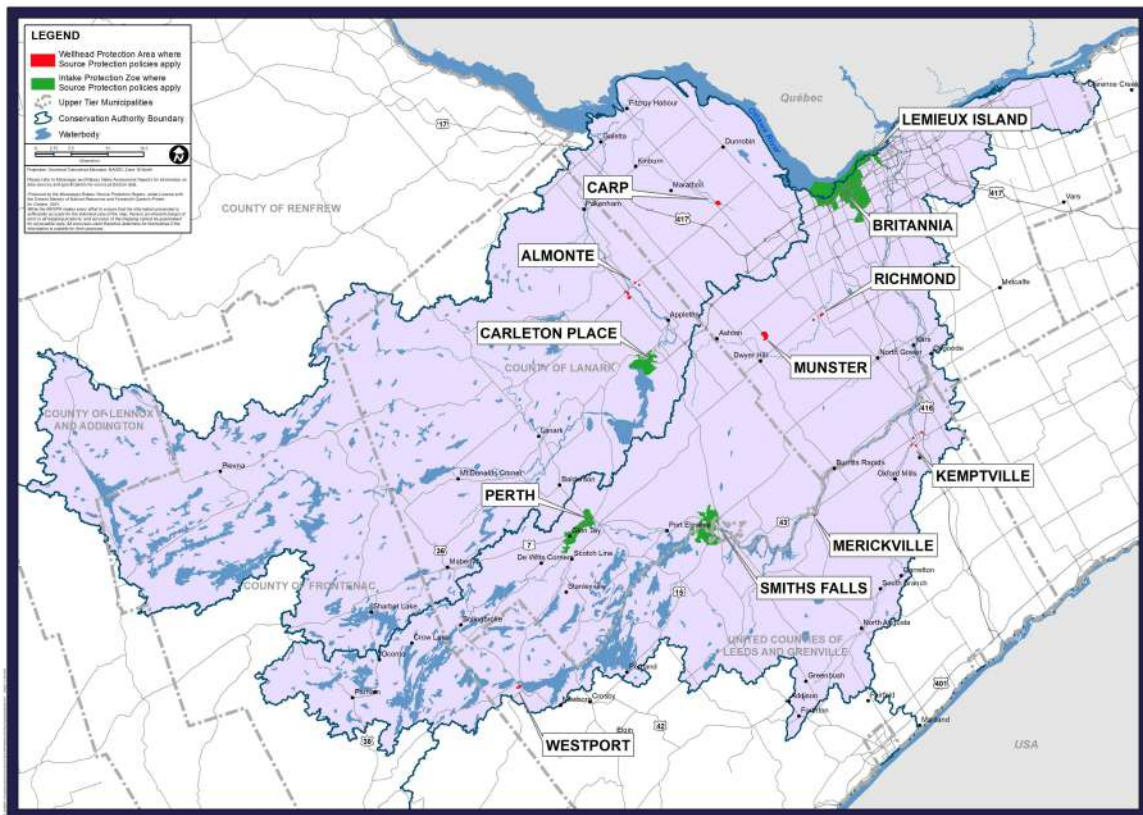
# Source Protection Annual Progress Report

## I. Introduction

As required by the *Clean Water Act* and its regulations, this report outlines the progress made in implementing the Mississippi-Rideau Source Protection Plan (MRSP) in 2025. Our Source Protection Region is made up of the Mississippi Valley and the Rideau Valley Source Protection Areas.

Source protection focuses on protecting sources of municipal drinking water such as lakes, rivers or underground aquifers that supply people with drinking water, from contamination and overuse.

About three quarters of the population of the Mississippi-Rideau Region live in an area that is serviced by the 13 municipal drinking water systems that are the focus of the MRSP. This report highlights progress made towards implementing this plan, which contains policies to protect these 13 local drinking water sources, spread across two watersheds.



## II. A message from your local Source Protection Committee

Our progress score on achieving source protection plan objectives this reporting period:

**P: Progressing Well/On Target** – The majority of the source protection plan policies have been implemented and/or are progressing.

Overall, the Source Protection Committee feels that implementation of Source Protection Plan policies is progressing well in the Mississippi-Rideau Region.

The Source Protection Committee met on April 2, 2026 to discuss the Annual Progress Report, which was provided to them prior to the meeting with the Agenda package. At the meeting, the Committee reviewed each item in the report, and agreed on a grade where needed. Each section was presented and discussed as questions or comments arose. Following the review of each section, the Committee completed the overall progress score for the reporting period. Committee members also had an opportunity to provide written comments, if desired, to staff.

### III. Our Watershed

To learn more, please read our assessment report(s) and source protection plan(s).

The Mississippi-Rideau Source Protection Region is made up of two Source Protection Areas: the Mississippi Valley Source Protection Area; made up of the lands that drain into the Mississippi River (called the Mississippi watershed) and the Rideau Valley Source Protection Area; made up of the lands that drain into the Rideau River (the Rideau watershed). All or part of 31 municipalities fall within the Mississippi-Rideau Source Protection Region. About three-quarters of the population of the Mississippi-Rideau Region live in an area that is serviced by the 13 municipal drinking water systems which are the focus of the Mississippi-Rideau Source Protection Plan. These 13 drinking water systems serve communities across the Region, and are divided into eight municipal wells (taking water from the ground), and five surface water systems (taking water from local rivers):

Groundwater Systems: Almonte, Munster, Carp, Richmond (King's Park), Kemptville, Richmond (W. Dev lands), Merrickville, and Westport.

Surface Water Systems: Carleton Place, Smiths Falls, Perth, Ottawa (Lemieux) and Ottawa (Brittania).

To develop the Source Protection Plan, a local committee with multiple stakeholders was created to oversee the source protection program and to guide its content. This committee includes members representing municipalities in the region, the agricultural community, industry, government and non-governmental organizations, as well as members of the public. It is supported by the Board of Directors of the two Conservation Authorities, which are referred to as the "Source Protection Authorities", when completing source protection work. Source Protection focuses on protecting rivers, lakes and groundwater where they supply drinking water systems that serve villages, towns and cities. This work is going on locally in 19 source protection regions and areas across Ontario. Between 2006 and 2012, studies were completed to help find out where the water for these systems was most vulnerable, by mapping areas around water treatment plant intake pipes (Intake Protection Zones or IPZs) and around municipal wells (Wellhead Protection Areas or WHPAs) to show where water comes from, how quickly it gets there, and how vulnerable it is to contamination or overuse. These areas are the focus of where policies in the Source Protection Plan apply today, to protect the sources of the 13 drinking water systems. Policies include prohibiting a few high-risk activities, requirements for risk management plans, the use of existing or amended approval processes, and education and outreach to encourage voluntary good practices. Highly vulnerable aquifers (HVAs), where soil is thin or absent and underlying bedrock contains large cuts and gaps characterize 89% of the region. Moreover, approximately 13% of the region is characterized as Significant Groundwater Recharge Area, where there are gravel deposits or soil features that allow a significant amount of rain and snowmelt to move down into the groundwater. In these areas, there are policies encouraging the wise use of road salt, promoting best management practices through education and outreach, and policies aimed at managing waste disposal sites.

## IV. At a Glance: Progress on Source Protection Plan Implementation

### 1. Source Protection Plan Policies and Addressing Significant Risks

#### **P: Progressing Well/On Target.**

There are 50 significant threat policies in the Mississippi-Rideau Source Protection Plan. These policies either prohibit or manage activities. 49 of the policies that address significant drinking water threats have been implemented (98%) and 1 significant threat policy is not applicable (2%). All significant threat policies are in effect when combining implemented and not applicable significant threat policies. In 2025, two additional significant threat policies were implemented when compared to 2024.

Of the 226 existing significant drinking water threats in our Region, all or 100% of the threats have been addressed (i.e., eliminated or managed).

## 2. Municipal Progress: Addressing Risks on the Ground

### **P: Progressing Well/On Target**

In the Mississippi-Rideau Source Protection Region, 15 municipalities have vulnerable areas where significant drinking water threat policies are included in the SPP. Legally binding policies apply to portions of Wellhead Protection Areas or Intake Protection Zones. Municipalities work to ensure that their day-to-day planning decisions conform with the source protection plan policies. All municipalities in our source protection region have processes in place to ensure that their day-to-day decisions conform with our source protection plans.

Municipalities regulate development through their powers under the Planning Act. Updating the Official Plan and Zoning By-Laws tools will help to ensure that decisions on planning matters are consistent with Source Protection Plan policies. In our Source Protection Region, municipalities are required to update their Official Plans either before, or during their next five-year review after January 1, 2015. Zoning must be updated within three years of the Official Plan amendments.

In the Mississippi-Rideau Region, all municipalities have completed their Official Plan amendments. 11 have completed their Zoning By-Law amendments and two municipalities are still in the process of updating (two municipalities are upper tier and do not have Zoning By-Laws).

### 3. Septic Inspections

#### **P: Progressing Well/On Target**

When an on-site sewage system is functioning properly, contaminants from the system are greatly reduced or eliminated. A key part of protecting drinking water is therefore accomplished through the Mandatory On-Site Sewage System Maintenance Inspection Program. Through inspections, this program ensures that on-site sewage systems are functioning properly where they are considered a significant drinking water threat.

100% of on-site sewage systems identified as a significant threat have been inspected in the first 5 year cycle in accordance with the Ontario Building Code, and minor maintenance work was completed where required. 2021 began the second 5 year cycle and 1 of 2 mandatory on-site sewage systems inspections were completed. The remaining inspection was completed in 2022 and found the system to be functioning as required.

#### 4. Risk Management Plans

##### **P: Progressing Well/On Target**

A Risk Management Plan (RMP) is a document that outlines the actions required to address an activity that has the potential to contaminate drinking water. These actions manage the risk associated with the activity so that drinking water is better protected. A Risk Management Official/Inspector works with the person to decide on the components of the RMP.

There are currently four Risk Management Officials/Inspectors in the Mississippi-Rideau Region; three of these work at the Conservation Authorities and one works at the City of Ottawa. In the Region, all municipalities except for the City of Ottawa have delegated risk management responsibilities to the Conservation Authorities.

Since the SPP took effect, a total of 52 RMPs have been established in the Mississippi-Rideau Region, with two RMPs being established this reporting period. However, 11 RMPs were revoked (no longer valid) in 2024 and an additional 8 were revoked in 2025. These RMPs were revoked because site visits in 2023, 2024 and 2025 proved that the threats were no longer present. This is because some businesses moved locations or homeowners removed their fuel oil tank and now use an alternative source of heat for their home.

In summary, there are a total of 34 active RMPs managing significant drinking water threats. There have been no cases of non-compliance with established Risk Management Plans observed to date. As of December 2025, there are no outstanding parcels requiring a Risk Management Plan.

## 5. Provincial Progress: Addressing Risks on the Ground

### **P: Progressing Well/On Target**

Ontario Ministries are reviewing previously issued provincial approvals (i.e. prescribed instruments, such as environmental compliance approvals under the Environmental Protection Act) where they have been identified as a tool in our plan to address existing activities that pose a significant risk to sources of drinking water. The provincial approvals are being amended or revoked where necessary to conform with plan policies. Our policies set out a timeline of three years to complete the review and make any necessary changes. The Ministries have completed this review for previously issued provincial approvals. Processes have been developed and implemented to screen new provincial approvals within vulnerable areas and are reported on annually.

In the Mississippi-Rideau Region, there were 95 previously issued provincial approvals identified that required review. All of these have been reviewed, for conformity to our Source Protection Plan. Only 2 Prescribed Instruments were amended or replaced because of the conformity exercises as described above.

In 2025, threats in our Region were screened by provincial staff for Source Water Protection Plan policies including 6 hauled sewage threats, 1 landfilling and storage threat and 1 manure storage threat. Of these, 1 manure storage threat was determined to be significant drinking water threat and was managed with conditions to the farm's nutrient management strategy.

## 6. Source Protection Awareness and Change in Behaviour

A total of 63 Drinking Water Protection Zone signs have been installed in the Mississippi-Rideau Source Protection Region along municipal and county roads to mark the 13 drinking water systems in the Source Protection Plan. A total of 9 Drinking Water Protection Zone signs have been installed in the Mississippi-Rideau Source Protection Region along provincial roads. These signs alert travelers to the vulnerable areas and some direct them to our website for more information. The signs are intended to encourage good stewardship practices and prompt spill reporting and response. They increase local knowledge of the wellhead protection areas and intake protection zones and can act to raise general awareness of the vulnerable areas by pointing travelers to the source protection region website.

In 2025, significant effort was put into advancing the Section 36 Update as committed to in our submitted Section 36 Workplan to the Ministry in 2018. Additionally, Mississippi-Rideau Source Protection staff reviewed the 2021 Technical Rule Changes and consulted with Municipal Working Group members to discuss proposed policy changes to align with the updates. When consultation on proposed changes commenced in 2024, comments received were minimal and minor, comments were generally supportive of this important work and program.

A comprehensive education and outreach program, 'Living in the Zone', has been developed. This includes resources on the Source Protection Region website, which was updated in 2025 to include more modern features and improve accessibility. There is a public mapping tool available on the website to help the public learn where vulnerable areas are and link them to policy information and regular email updates are provided to subscribers to our Mississippi-Rideau Source Protection Region. Social media campaigns are frequently posted by the Rideau Valley Conservation Authority to raise awareness on protecting drinking water.

In 2025, staff attended a variety of forums, open houses and information sessions to spread the word on the importance of protecting our sources of drinking water. These are great opportunities to engage with the public, answer questions and consult with our implementing bodies.

## 7. Source Protection Plan Policies: Summary of Delays

Source Protection staff have worked diligently to advance implementation of Source Protection Plan policies. Of the total 87 plan policies, 85 are considered implemented. The outstanding policies include the revision of a non-mandatory Salt Management Plan and two in-progress municipal zoning conformity exercises. Source Protection staff continue to work with our implementing bodies to support this work. These municipalities anticipate progress and/or completion in 2026.

2025 is also a milestone year, where all significant drinking water threats are deemed to be managed by either a Risk Management Plan or a Prescribed Instrument.

## **8. Source Water Quality: Monitoring and Actions**

In our source protection region/area, no issues have been identified in our local science-based assessment reports regarding the quality of the sources of municipal drinking water.

## 9. Science-based Assessment Reports: Work Plans

No work plans were required to be implemented for our assessment reports.

## 10. More from the Watershed

To learn more about our source protection region/area, visit our website at:

[www.mrsourcewater.ca](http://www.mrsourcewater.ca)



Upper left and upper right: Lemieux Island Water Purification Plant tour and SPC Meeting—April 2025

Lower left: RVCA Watershed Tour—June 2025

Middle right: Smiths Falls Water Treatment Plant Open House—May 2025

Lower right: Ottawa Geoscience Open House—November 2025

## Comment Sheet – Annual Progress Reporting Source Protection Committee Comments

### Information

Two draft annual progress reports have been provided for your review. One public facing progress report document, and one supplemental reporting form, which is not meant to be available to the public but is for the Ministry of the Environment, Conservation and Parks.

The Committee will be provided with a summary and presentation on the results of the Annual Progress Reporting at the Committee meeting on April 2, 2026. The Committee is being provided with the reports ahead of time, to meet some *Clean Water Act* requirements for timing and to give the chance to review and provide comments in writing if so desired.

### Grading of Implementation Progress

Part of the reporting requires the Source Protection Committee to provide a progress score on achieving source protection plan objectives during the reporting period out of three options:

1. **Progressing well/On target** meaning the majority of source protection plan policies have been implemented and/or are progressing
2. **Satisfactory** meaning some of the source protection plan policies have been implemented and/or are progressing
3. **Limited Progress** meaning a few source protection plan policies have been implemented and/or are progressing

**Please provide your comments, if desired below on the Source Protection Annual Progress Report – Draft for SPC document. Please provide any written comments by April 2, 2026:**

<p>I. Introduction</p>	
------------------------	--

<p>II. A Message from your local Source Protection Committee</p>	<p>Scoring: Other:</p>
<p>III. Our Watershed</p>	
<p>IV. At a Glance: Progress on Source Protection Plan Implementation</p>	
<p>1. Plan Policies</p>	<p>Scoring: Other:</p>
<p>2. Municipal Progress</p>	<p>Scoring: Other:</p>

3. Septic Inspections	Scoring:  Other:
4. Risk Management Plans	Scoring:  Other:
5. Provincial Progress	Scoring:  Other:
6. Source Protection Awareness	

7. Summary of Delays	
8. Monitoring and Actions	
9. Science-based Assessment Reports: Work Plans	
10. More from the Watershed	

**Thank you!**

# Protecting Ontario's Sources of Drinking Water Progress Summary (2017-2024)

## Protection Framework

## Actions for Protection

### Clean Water Act, 2006



First step in source to tap protection

- Protects existing and future sources of drinking water in Ontario from contamination and depletion
- Enables municipalities to take action to protect source water through prevention
- Strong focus on risk management and land use planning

### Prescribed instruments

- Specific approvals or instruments that ensure activities conform with source protection requirements
- New activity applications are screened for vulnerable areas and significant drinking water threats

↑ **3256 applications reviewed**  
↑ **1128 risk activities regulated**

### Interactive mapping tool



- Source Protection Information Atlas
- Web based interactive mapping tool with real time data
- User can determine if a property is in a vulnerable area
- Helps user identify if they need to take action to protect a nearby source of drinking water

### Provincial partnerships



- 19 lead source protection authorities
- 19 source protection committees
  - Multi-stakeholder representing local interests
  - Local champions for source protection and support on-the-ground efforts
- 286 municipalities

### Risk management plans (RMPs)

- Site specific documents that outline required actions to address high-risk drinking water threats
- Approximately **125 risk management officials** across the province **enforce 2113 RMPs**

↓ **98% Compliance with 672 RMP inspections in 2024**  
 2017 ➡ 506 RMPs on 669 properties  
 vs  
↑ 2024 ➡ 2113 RMPs on **2637** properties

### Other actions

- ↓ **94%** of municipalities are incorporating source water protection into their official land use plans
- ↑ **2233** source water protection signs have been installed on roadways throughout Ontario
- ↑ **18313** septic systems inspected since 2017
- **1046** septic systems inspected in 2024

### Source protection plans



- 22 plans protecting ~450 municipal drinking water systems
- Science-based protection zones used to protect drinking water sources
- Contain requirements for actions to protect drinking water

↑ **19917 risks addressed**  
↑ **95% policies being implemented or in progress**

### Prohibited activities in highly vulnerable areas

- Significant current and future threat activities can be prohibited under the Act.
- ↑ **449 high risk activities currently prohibited in Ontario**  
*For example road salt application is prohibited in certain areas*

